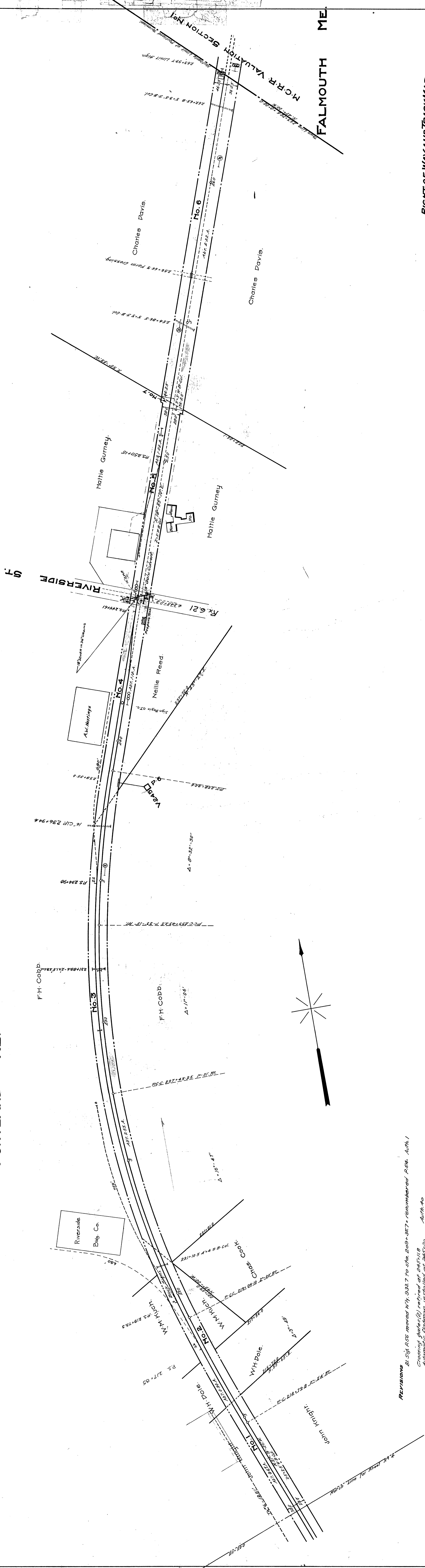


No.	GRANTOR	GRANTEE	INSTRUMENT DATE	RECORD	RECEIPT No.	REMARKS
1	Arthur Wright	Camdenland Co.	Oct 10 1889	1889	1889	Receipt for Amalgam
2	Arthur Wright	Camdenland Co.	Oct 10 1889	1889	1889	Receipt for Amalgam
3	George Smith	Camdenland Co.	Oct 10 1889	1889	1889	Receipt for Amalgam
4	William Cobb	Camdenland Co.	Oct 10 1889	1889	1889	Receipt for Amalgam
5	Olivia L. Brackett	Camdenland Co.	Oct 10 1889	1889	1889	Receipt for Amalgam
6	Joseph H. Davis	Camdenland Co.	Oct 10 1889	1889	1889	Receipt for Amalgam
7	Hattie G. Gurney	Camdenland Co.	Oct 10 1889	1889	1889	Receipt for Amalgam

PORTLAND ME.

FALMOUTH ME.



REVISIONS
 Bl 561 ASB moved N 1/4, 933.7 to sta. 209+387, renumbered Ast. Auth. 1
 Crossing stakes (2) reworked at 245+11.8
 Automatic flagman installed at 240+25 Auth. 4
 Crossing tenders cabin at 245+00 reworked Auth. 52

Sheet No. 5 of five primary sheets and one supplemental sheet of the
 Portland Terminal from survey station 211+20 to survey station 252+76.6
 Main Line Union Station to Portland-Falmouth Line

[Signature]
 OFFICE OF CHIEF ENGINEER
 PORTLAND, MAINE

RIGHT-OF-WAY AND TRACK MAP
PORTLAND TERMINAL
 Operated by the
PORTLAND TERMINAL COMPANY
 STATION LINE 0070 STATION 253+76.6
 Scale - 1" = 100'
 JUNE 30, 1916