

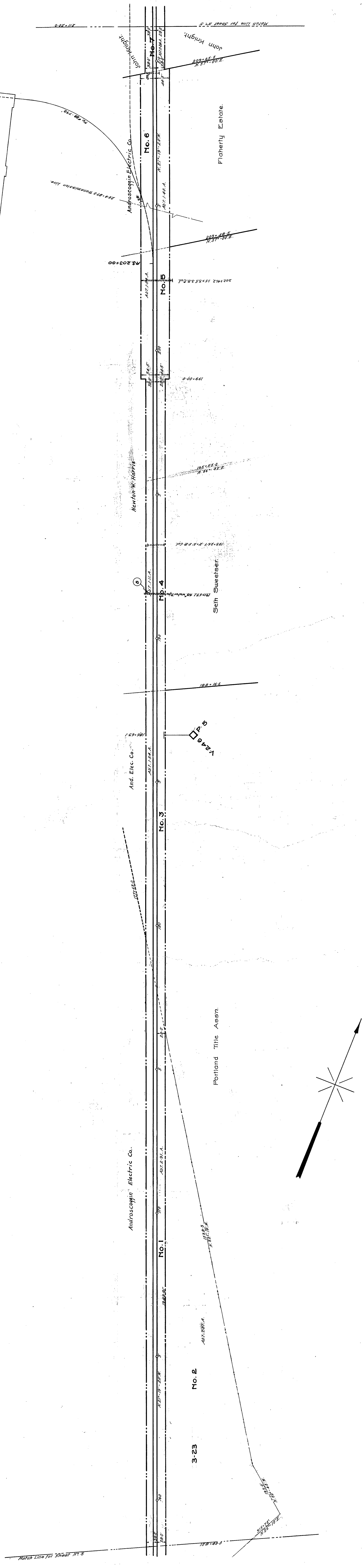
NO GRANTOR GRANTEE INSTRUMENT DATE RECORDS COST No. REMARKS

1 Henry Wilson Award 1880 Cumberland Co. Dec 5 1884 Page 544 4686
 2 James Brown Award 1880 Cumberland Co. Dec 5 1884 Page 544 4686
 3 W.S. Woodbury Award 1880 Cumberland Co. Dec 5 1884 Page 544 4686
 4 Richard Knight Award 1880 Cumberland Co. Dec 5 1884 Page 544 4686
 5 Nathaniel Atkins Award 1880 Cumberland Co. Dec 5 1884 Page 544 4686
 6 Abner Knight Award 1880 Cumberland Co. Dec 5 1884 Page 544 4686

7-11-1884 Seth Sweetser
 8-1-1884 Seth Sweetser
 9-1-1884 Seth Sweetser
 10-1-1884 Seth Sweetser
 11-1-1884 Seth Sweetser

Assessment for pipe X 1/2"

PORTLAND ME.



REVISIONS
 Bl. 5/24 1936 moved N.W. 533.7 to Sta 209+35.7, renumbered 234
 248 13842 - 166+78.4
 Auth. 1

Sheet No. 4 of five primary sheets and one supplemental sheet of the
 Portland Terminal from survey station 158+40 to survey station 211+20
 Main Line, Union Station to Portland-Falmouth Line.

[Signature]
 Officer authorized to sign records.

RIGHT-OF-WAY AND TRACK MAP
 PORTLAND TERMINAL
 Operated by the
 PORTLAND TERMINAL COMPANY
 STATION 158+40 TO STATION 211+20
 Scale - 1" = 100'
 JUNE 30, 1916
 OFFICE OF CHIEF ENGINEER
 PORTLAND, MAINE