

BOSTON AND MAINE - MAINE CENTRAL RAILROADS

MECHANICAL ENGINEER'S OFFICE

RAIL MOTOR CAR DIAGRAM INDEX

<u>Sheet No.</u>	<u>Railroad</u>	<u>Rail Motor Cars</u>	
1	Boston & Maine	1121-1124 incl.	CARS SOLD
2	Boston & Maine	1125-1126 incl.	OBSOLETE
3	Boston & Maine	1140	
4	Boston & Maine	1141	OBSOLETE
5	Boston & Maine	1150-1151 incl.	
6	Boston & Maine	1152	SOLD
7	Boston & Maine	1170	
8	Boston & Maine	1171	SOLD
9	Boston & Maine	1180-1183 incl.	1185 and 1187
10	Boston & Maine	1184	
11	Boston & Maine	1186	
12	Boston & Maine	1190	
13	Boston & Maine	1195-1196 incl.	
14	Boston & Maine	6000	
15	Boston & Maine	weight distribution	6000
16	Maine Central	901	

Billerica Shop
September 24, 1935
RFD #MCM

BOSTON & MAINE RAILROAD
HISTORICAL SOCIETY
ARCHIVES

see new sheet dated Nov 2, 1942

BOSTON AND MAINE RAILROAD
 BOSTON & MAINE MUSEUM
 MECHANICAL DEPARTMENT HISTORICAL SOCIETY
 BOSTON ARCHIVES

DIAGRAM

SHEET #1

Asst. Eng. J. H. ...
 J. H. ...
 11-1-35

SUPERSEDING
 21608-E

RAIL MOTOR CARS	LINE	DATE
21608-E	1	6-10-35

FRONT TRUCK (DRIVE)

MAKE - BRILL
 WHEELS - 35 RANGER CUSHION ROLLER STEEL TRUCK
 JOURNALS - ROLLER BEARING (THREE)
ROUND STEEL CENTERS

REAR TRUCK (TRAILER)

MAKE - BRILL
 WHEELS - 33 SOLID R.S. TRUCK 8.5 CTR.
 JOURNALS - ROLLER BEARING (TWO)

POWER PLANT

ENGINE - WINTON .110 - 190 HP.

CONTROL EQUIPMENT

SINGLE END - MECHANICAL - 5 SPEEDS FORWARD 5 REV.

AIR BRAKE

MAKE - WEST. A. B. CO
 SCHEDULE - A M P
 COMPRESSOR - 1. D. H. 46 10 C.A.T.
 CYL. SIZE 12 X 12

HEATER

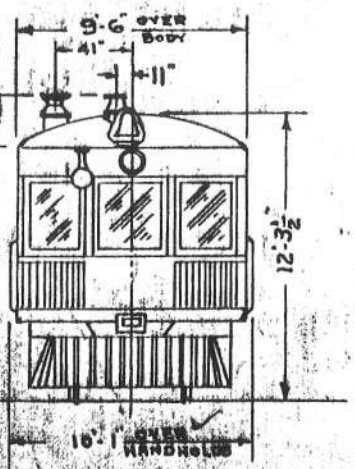
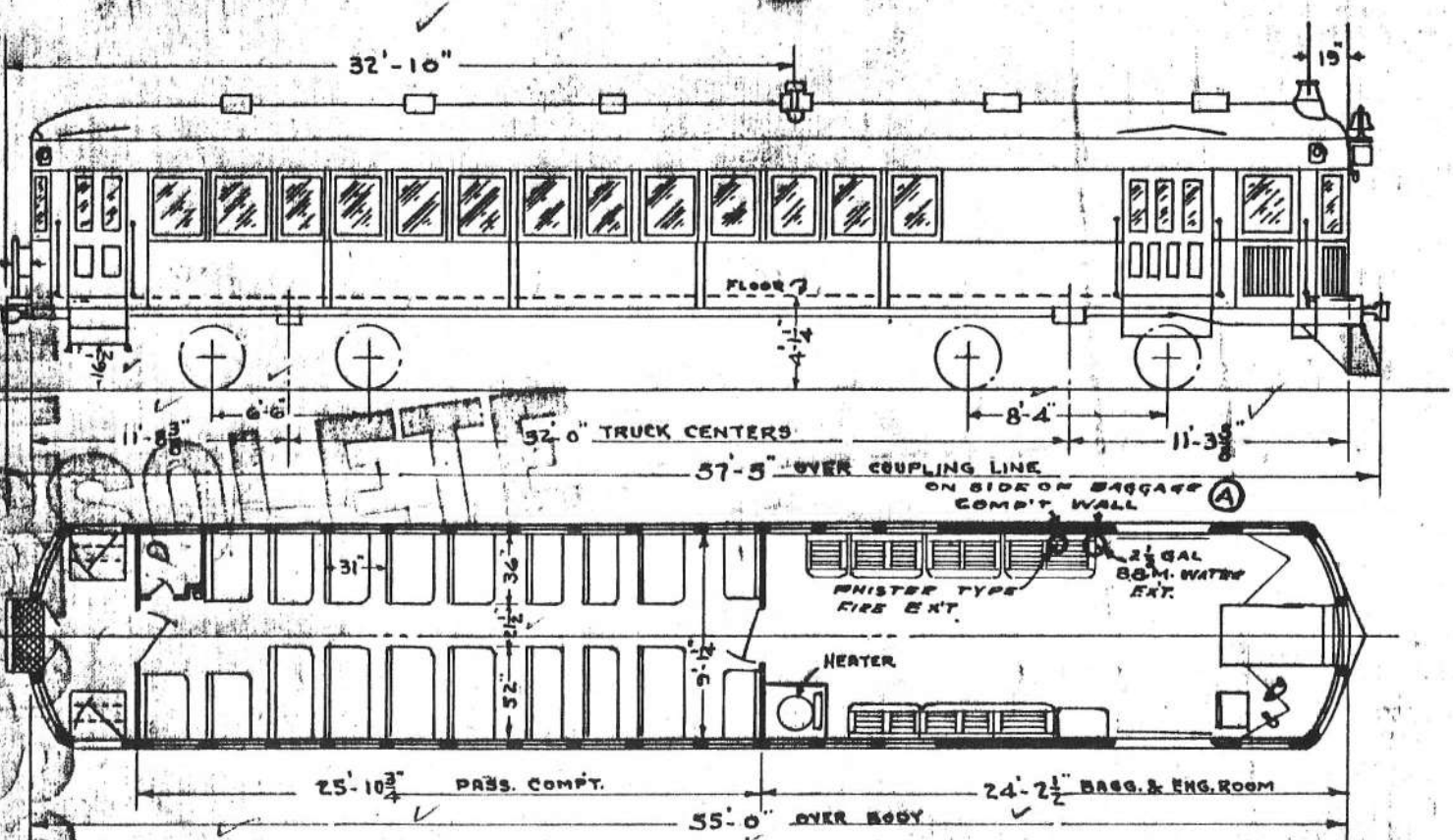
PETER SMITH OC-2A.

FUEL TANK CAP. 190 GALS.

SEATING CAPACITY:
 PASSENGER COMPT. 45
 BAGGAGE COMPT. 14
TOTAL 59

BAGGAGE CAP 6000 LBS

WEIGHTS (WORKING ORDER)
 AT FRONT TRUCK 38150
 AT REAR TRUCK 25500
TOTAL 63650



DR. TR. EXP. CH.

DIAGRAM

SHEET #1

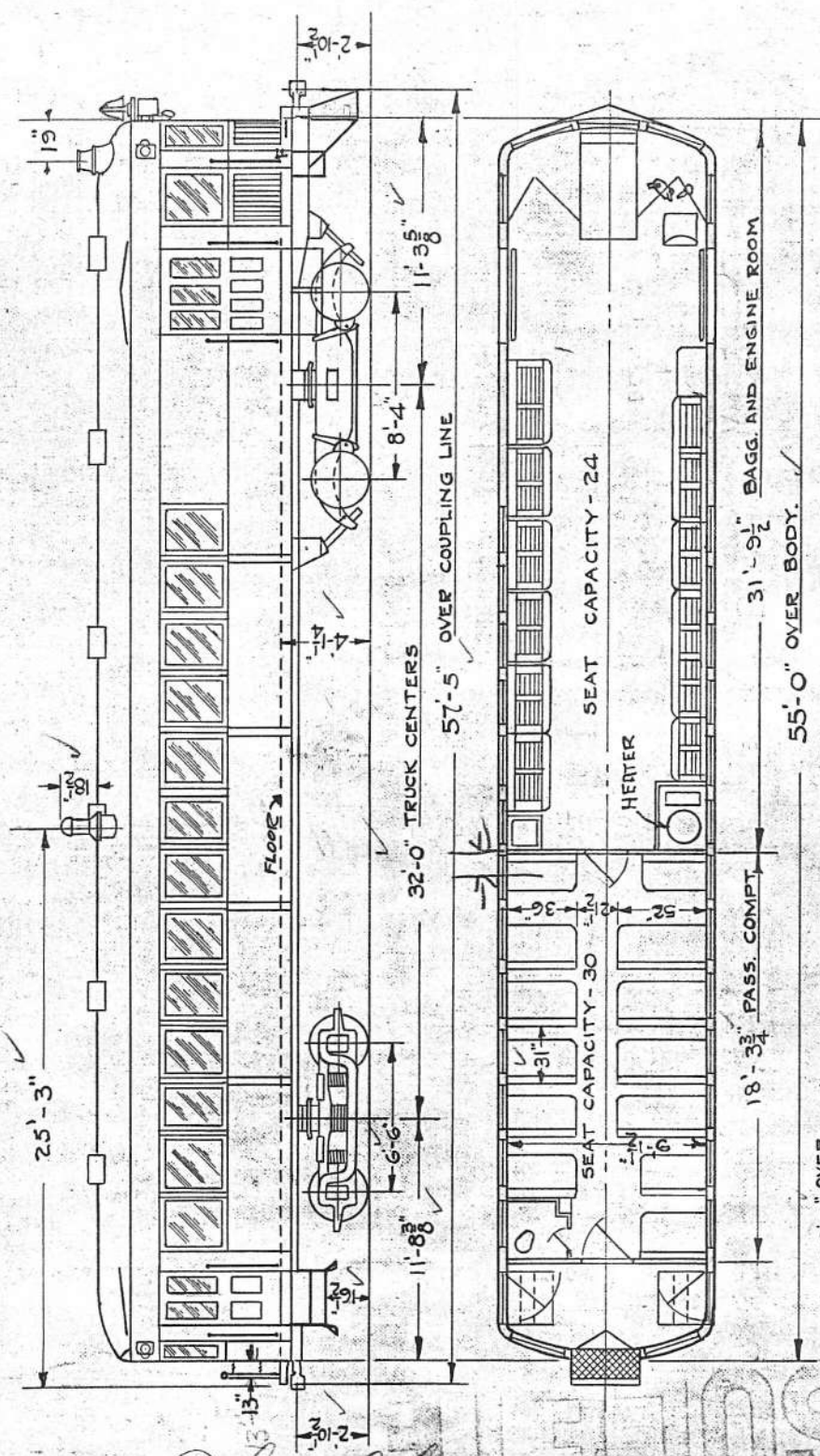
CARS SOLD

SHEET #2
E. R. Ruggley
 9-10-35

SUPERSEDING
 21669-E

RAIL MOTOR CARS	LINE	DATE
1125-1126	1	

DIAGRAM



FRONT TRUCK (DRIVE)
 MAKE- BRILL
 WHEELS- 33 RUBBER CUSHION ROLL. STLTREAD
 ROLLED STEEL CENTER
 JOURNALS- ROLLER BEARING (TIMKEN)

REAR TRUCK (TRAILER)
 MAKE- BRILL
 WHEELS- 33 SOLID R.S. TREAD. R.S. CTR.
 JOURNALS- ROLLER BEARING (TIMKEN)

POWER PLANT
 ENGINE- WINTON-110-190 HP.

CONTROL EQUIPMENT
 SINGLE END- MECHANICAL- 5 SPEEDS FORWARD 5 REV.

AIR BRAKE
 MAKE- WEST. A. B. CO.
 SCHEDULE- A M M
 COMPRESSOR- I. D. H. B-16 16 CU. FT.
 CYL. SIZE. 12" X 12"

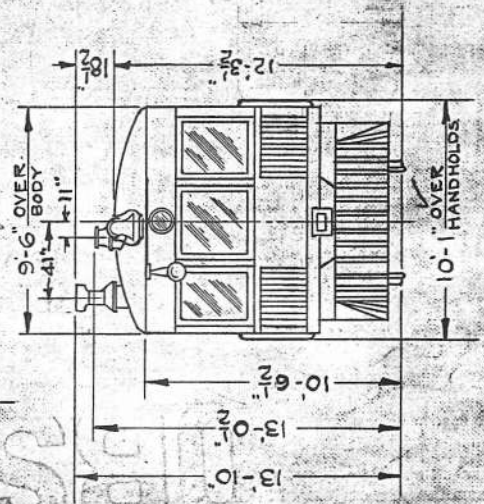
HEATER
 PETER SMITH. OC-2A

FUEL TANK CAP. 100 GALS.

SEATING CAPACITY.
 PASSENGER COMPT. 30
 BAGGAGE COMPT. 23
 TOTAL 53

BAGGAGE CAP. 10,000 LBS.

WEIGHTS (WORKING ORDER)
 AT FRONT TRUCK. 38160
 AT REAR TRUCK. 25500
 TOTAL. 63660



DR. TR. W. P. CH.

Obsolete 11/1/37 dac

DIAGRAM

SHEET #2

1125-1126

9-10-35
9-18-35 A
3-17-37 B
11-1-37: C
9-17-46: D
8-5-49: E

DIAGRAM

RAIL MOTOR CARS LINE DATE

DIESEL ELECTRIC # 1140 1 5-15-35

BLDG'S NO. 1573

FRONT TRUCK. (DRIVE)
MAKE - GENERAL STEEL CASTINGS CORPN. 6 WHEEL
WHEELS - 36" DIA. ROLLED STEEL
JOURNALS - TIMKEN 6X11 AERA.
TRACTION MOTORS - TWO - GE - 721-B

REAR TRUCK. (DRIVE)
MAKE - GENERAL STEEL CASTINGS CORP. 4 WHEEL
WHEELS - 36" DIA. ROLLED STEEL.
JOURNALS - TIMKEN 6X11 AERA.
TRACTION MOTORS - TWO - GE - 721-B

POWER PLANT
ENGINES - TWO - INGERSOLL-RAND - 400 HP EACH.
GENERATOR - MAIN - 5 GT 538 A 1
GENERATOR - AUX. 5 GTB 538 A 1
EXCITER - 5GY 2+1

CONTROL EQUIPMENT
SINGLE END - GE. TYPE P.

AIR BRAKE
MAKE - N.Y.A.B. CO.
SCHEDULE - L.T. (MODIFIED) M-1
COMPRESSOR - TWO - GE. CP-30. 35 CU. FT. EACH. 125V
CYL. SIZE - TWO - 14" X 12"

HEATER
D.C. 110-510G-4E RE-CIRC. TYPE VAPOR - CLARKSON
STEAM BOILER, CAP. 1000 LB. STEAM PER HOUR

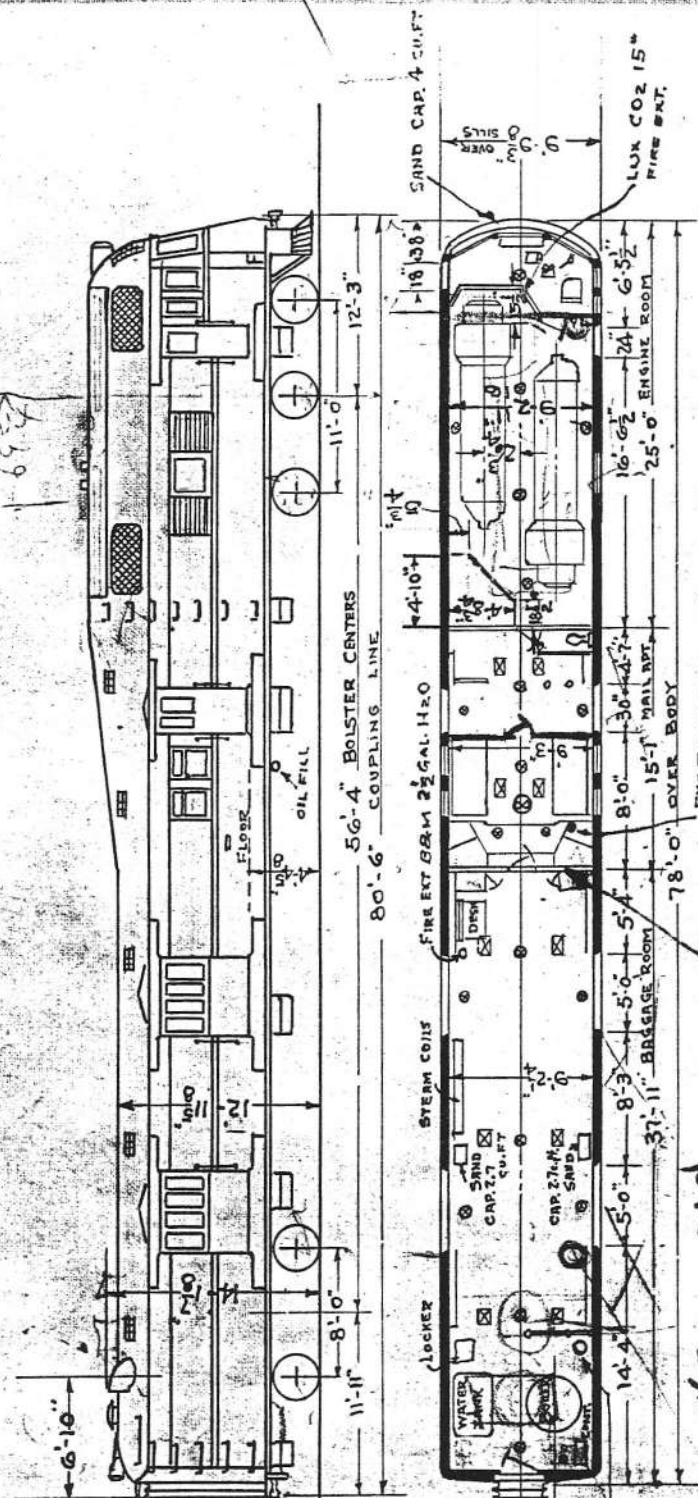
FUEL TANK CAPACITIES
ENGINE AND
STEAM BOILER. 600 GAL.

WATER TANK CAPACITIES
ENGINE 100 GALS
STEAM BOILER - 725 GALS

WEIGHTS (WORKING ORDER) (D)
AT FRONT TRUCK. 153,300 LBS
AT REAR TRUCK. 80,700 LBS
TOTAL 234,000 LBS

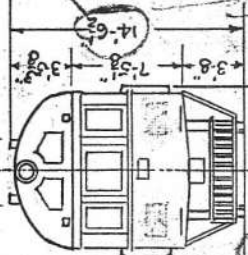
BAGGAGE COMPT. CAP. 22,000 LBS.
MAIL APT. CAP. 5,000 LBS.
WEIGHT ON DRIVERS - 19,340 LBS.

(E) DATE BUILT, AUG. 1935



RYE FLYER 10T
PARTITION & RACKS REMOVED WHILE
ON CONN. RIVER - NORTHAMPTON SERVICE.
REB LETTER 2/13/47 (422,003)

Handwritten notes: 14-7/8, 12-1/2, #70 Annual



Handwritten text: OBSOLETE SEE ISSUE

- (E) DATE BLT
- (D) HEATER & RESULT WTS. CHANGED.
- (C) FIRE EXT. INFO. ADDED

DIAGRAM

SHEET #3

1140

ABSOLUTE

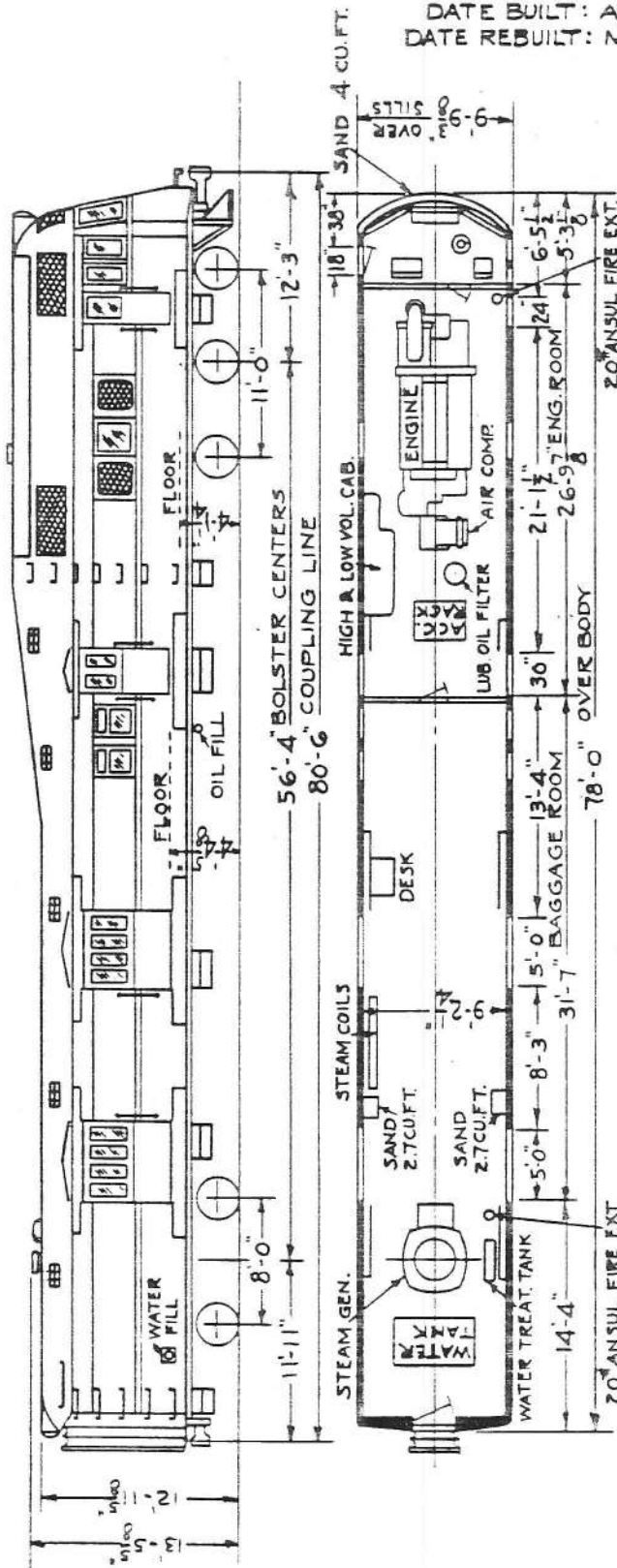
DR. EWP
TR.
CM.

DIAGRAM

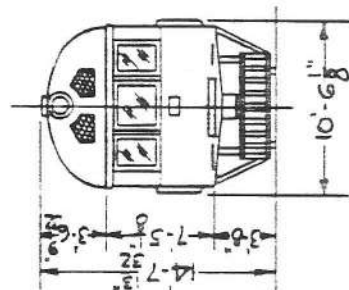
BUILDER'S NO. 1573
DATE BUILT: AUG. 1935
DATE REBUILT: MAY 1951

RAIL MOTOR CARS LINE DATE

DIESEL ELECTRIC # ~~1140~~ 1 6/22/51
RETIRED 10-29-57



- FRONT TRUCK (DRIVE)**
MAKE: GEN. STL. CASTG. CORP. 6 WHEEL
WHEELS: 36" DIA. ROLLED STEEL
JOURNALS: TIMKEN 6" X 11"
TRACTION MOTORS: TWO G.E. 721-B
- REAR TRUCK (DRIVE)**
MAKE: GEN. STL. CASTG. CORP. 4 WHEEL
WHEELS: 36" DIA. ROLLED STEEL
JOURNALS: TIMKEN 6" X 11"
TRACTION MOTORS: TWO G.E. 721-B
- POWER PLANT**
ENGINE: EMD 8-567B - 800 H.P.
GENERATOR, MAIN: EMD D-15C
GENERATOR, AUX.: { EMD A-2102 - 18 KW.
EMD A-7159 - 10 KW.
- CONTROL EQUIPMENT**
SINGLE END EMD TYPE
- AIR BRAKE**
MAKE: N.Y. A. B. CO.
SCHEDULE: G-ET
AIR COMPRESSOR: GARDNER DENVER ABO.
CYLINDER SIZE: TWO 14" X 12"
- HEATER**
STEAM GENERATOR: VAPOR* DRK-451G
- FUEL TANK CAPACITIES**
ENGINE AND STEAM GENERATOR: 600 GAL.
- WATER**
ENGINE: 276 GAL.
BOILER TANK: 840 GAL.
- LUBRICATING OIL**
ENGINE: 135 GAL.
- BATTERIES**
EXIDE MV-25 D 32 CELLS.
- WEIGHTS (WORKING ORDER)**
AT FRONT TRUCK: 136350 LBS.
AT REAR TRUCK: 88410 LBS.
TOTAL 224760 LBS.
- WEIGHT ON DRIVERS: 180,500 LBS.**
BAGGAGE ROOM CAPACITY: 22,000 LBS.



TH. 5-7-57 AUTH. # 888
RETIRED 10-29-57 AT BILLERICA

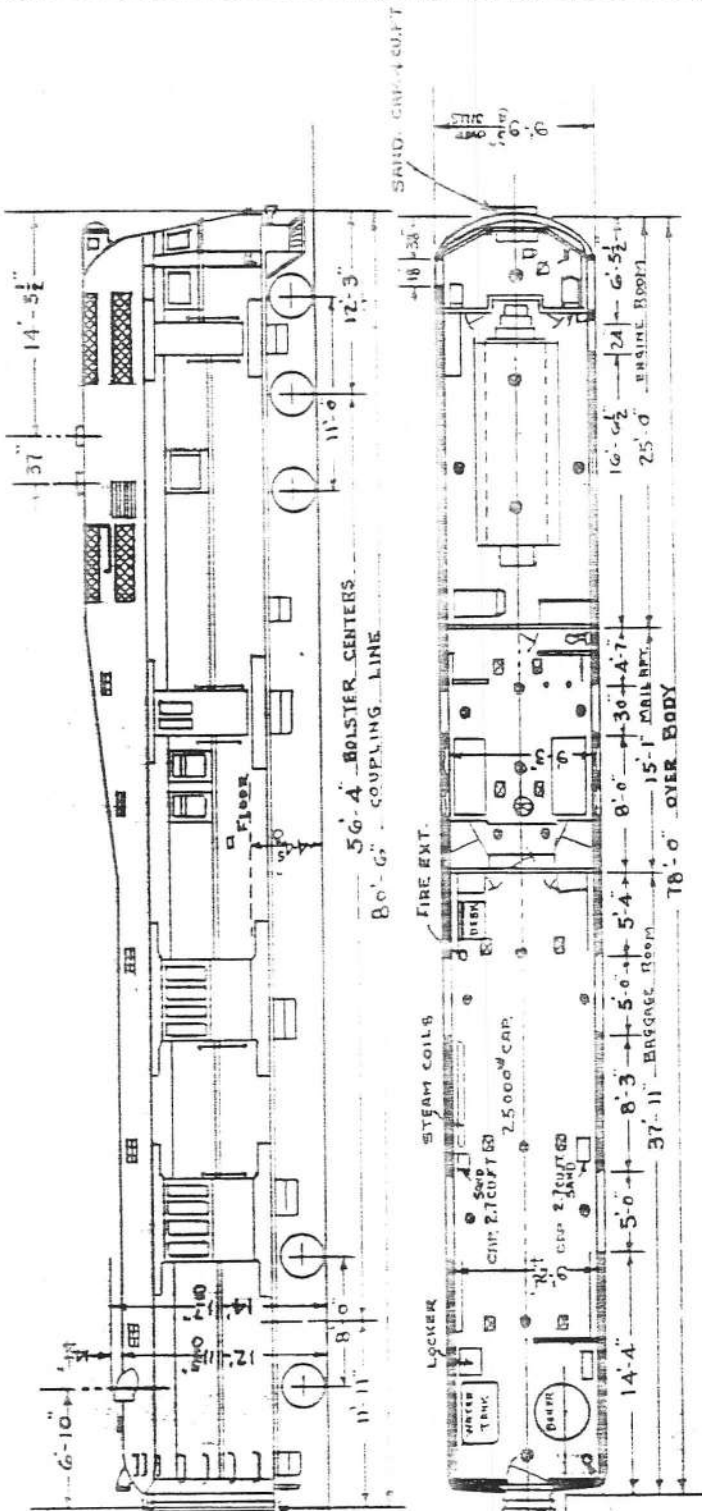
APPROVED: [Signature]
 DATE: 9-10-35
 RECD. ENG.: [Signature] 9-11-35 A

DIAGRAM

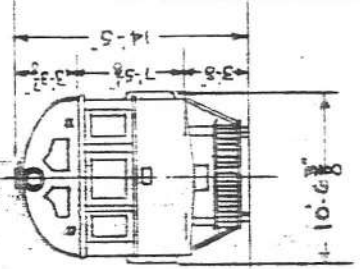
SUPERSEDING

RAIL MOTOR CARS	LINE	DATE
DIESEL ELECTRIC		
1141		1 152735

SOLD



- FRONT TRUCK (DRIVE)**
 MAKE: GENERAL STEEL CASTINGS CORP. 4 WHEEL
 WHEELS - 36 DIA. ROLLED STEEL
 JOURNALS - TIMKEN - Gx11 AERA
 TRACTION MOTORS - TWO - WEST. 588-AV
- REAR TRUCK (DRIVE)**
 MAKE: GENERAL STEEL CASTINGS CORP. 4 WHEEL
 WHEELS - 36 DIA. ROLLED STEEL
 JOURNALS - TIMKEN - Gx11 AERA
 TRACTION MOTORS - TWO - WEST. 588-AV
- POWER PLANT**
 ENGINES - ONE WESTINGHOUSE 950 HP TYPE 4
 GENERATOR - MAIN WESTINGHOUSE 484
 GENERATOR - AUX. WESTINGHOUSE TG-22
- CONTROL EQUIPMENT**
 SINGLE END - WEST.
- AIR BRAKE**
 MAKE - N. Y. A. B. CO.
 SCHEDULE - L. J. (MODIFIED)
 COMPRESSOR ONE - Z. D. 3 CAP. 120 CU. FT.
 CYL. SIZE - TWO - 14 X 12"
- HEATER**
 VAPOR CAR HEATG. CO #4100 STEAM BOILER
- FUEL TANK CAPACITIES**
 ENGINE AND
 STEAM BOILER - 600 GAL.
- WATER TANK CAPACITIES**
 ENGINE 215 GALS
 STEAM BOILER - 72.5 GALS.
- WEIGHTS (WORKING ORDER)**
- | | |
|----------------|-------------|
| AT FRONT TRUCK | 134 100 LBS |
| AT REAR TRUCK | 87 600 " |
| TOTAL | 221 700 " |
- BAGGAGE COMP. CAP.** 22000 LBS.
MAIL APT. CAP. 5000 LBS.
- WEIGHT ON DRIVERS - 177000 LBS.**



SOLD

11/137

BOSTON AND MAINE RAILROAD

MECHANICAL DEPARTMENT

BOSTON

DIAGRAM

SHEET #5 A

APPROVED

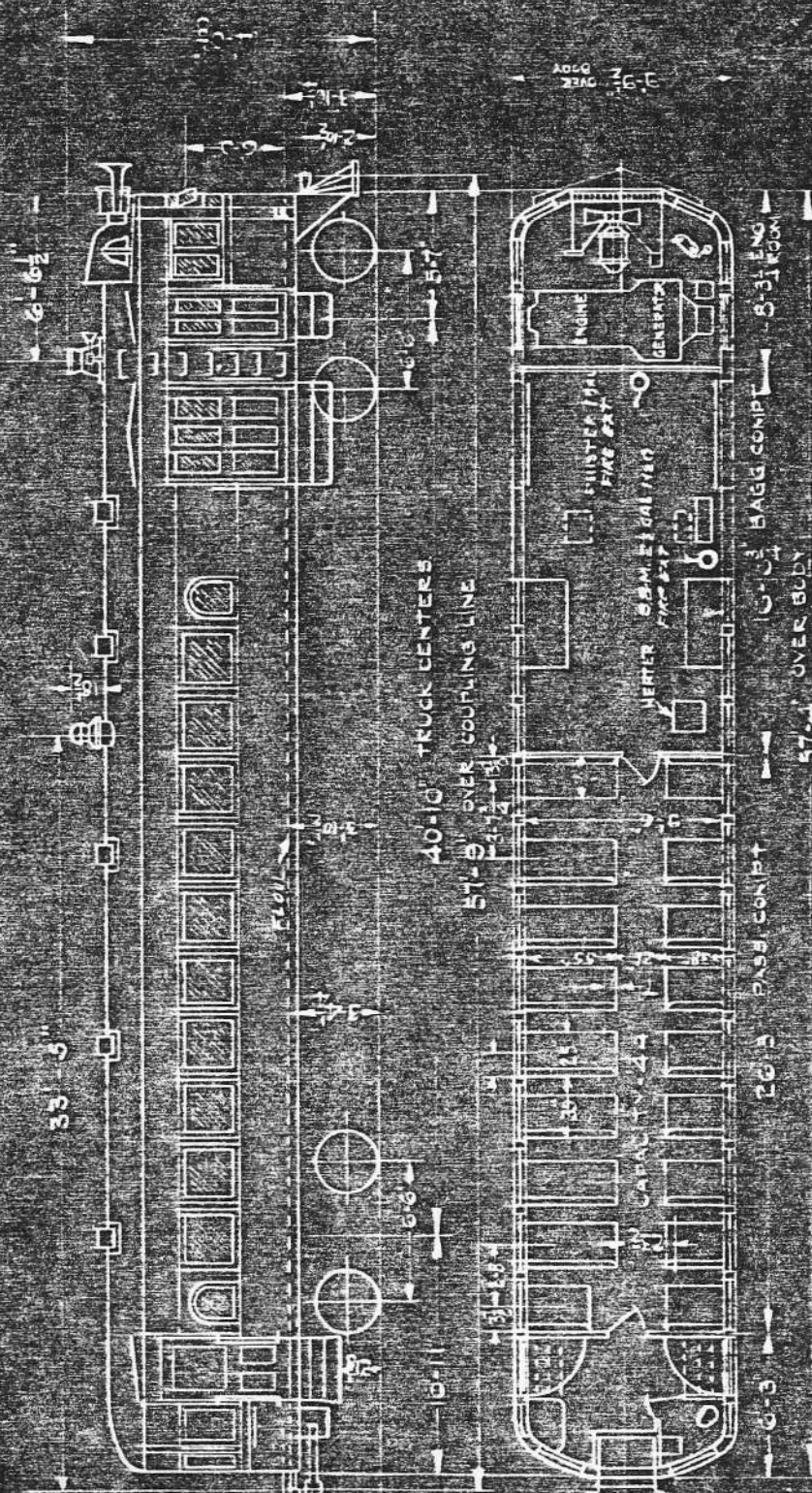
MECH ENGR

ISSUE
5-10-35
11-1-37: A

SUPERSEDING
2-667-C

RAIL MOTOR CARS	LINE	DATE
1150-115F	1	

1150-115F	1	
-----------	---	--



FRONT TRUCK (DRIVE)
 MAKE - ELECTRO MOTIVE #23 EQUALLED
 WHEELS - 33" DIA. ROLLED STEEL
 JOURNALS - 4" X 8" AERA
 TRACTION MOTORS - 2 - GE-24CE - 100 HP

REAR TRUCK (TRAILER)
 MAKE - ELECTRO MOTIVE #23 EQUALLED
 WHEELS - 33" DIA. ROLLED STEEL
 JOURNALS - 4" X 8" AERA

POWER PLANT (E-M MODEL 106)
 ENGINE - WINTON 106 - 200 HP
 GENERATOR - GE-70C-6-D 100 VOLTS 110 KW
 EXITER - GE-ED-4-C 60 VOLTS 2.5 KW

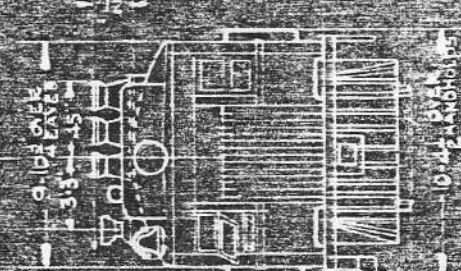
CONTROL EQUIPMENT
 SINGLE END WITH 1 - K-73-A CONTROLLER

AIR BRAKE
 MAKE - WEST A.B. CO.
 SCHEDULE - A.M.M.
 COMPRESSOR - 1 - CP-17-A 20 CU FT.
 CYL SIZE - 12" X 12"
HAND BRAKE
 HEATER - PEACOCK STAFFLESS
~~HEATER - SULLIVAN~~
 ARCOLA 6N (HSC ONLY)
 FUEL TANK CAP - 150 GALS

SEATING CAPACITY	
PASSENGER COMPT	44
BAGGAGE COMPT	6
TOTAL	50

BAGGAGE CAP - 6000 LBS

WEIGHTS (WORKING ORDER)	(1150)	(115F)
AT FRONT TRUCK	47600	42000
AT REAR TRUCK	31000	30000
TOTAL	78700	76000



DR.
TR. WAZ
CH.

(A) FIRE EXT. INFO. ADDED

DIAGRAM

SHEET #5

1150-115F

BOSTON AND MAINE RAILROAD

MECHANICAL DEPARTMENT
BOSTON

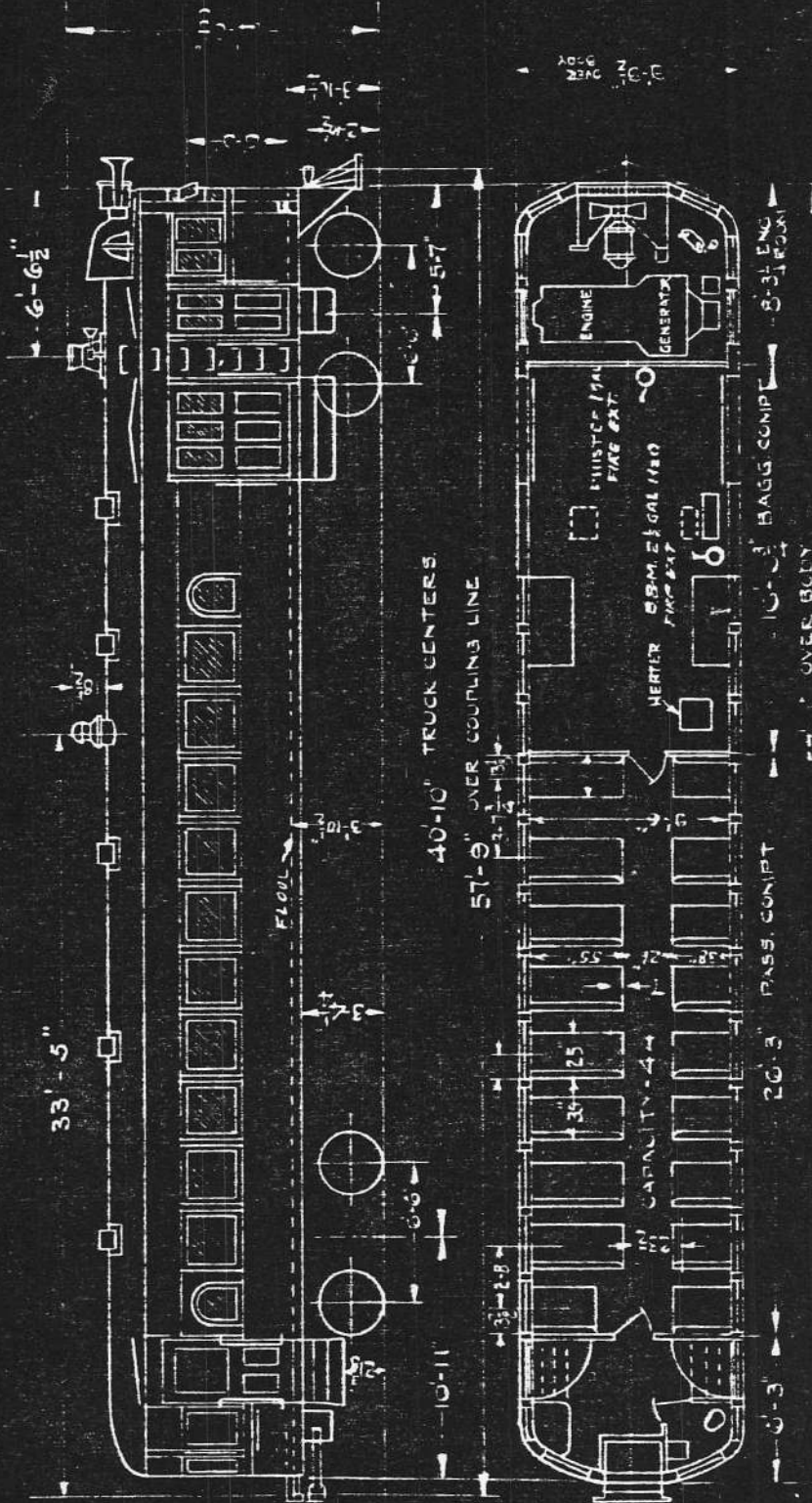
DIAGRAM

SHEET #5

APPROVED
M. H. ENGR
C. M. O.
SUPERSEDING
21007-C

ISSUE
2-10-35
11-1-37

RAIL MOTOR CARS	LINE	DATE
1150-1157	1	



FRONT TRUCK (DRIVE)
MAKE - ELECTRIC MOTIVE #23 EQUALIZED
WHEELS - 33" DIA. ROLLED STEEL
JOURNALS - 4" X 8" AERA
TRACTION MOTORS - 2 - GE-240E - 100 HP

REAR TRUCK (TRAILER)
MAKE - ELECTRIC MOTIVE #23 EQUALIZED
WHEELS - 33" DIA. ROLLED STEEL
JOURNALS - 4" X 8" AERA

POWER PLANT (E.M. MODEL 106)
ENGINE - WINTON 106 - 200 HP
GENERATOR - GE-TDC-6-D 100 VOLTS 110 KW
EXCITER - GE-ED-4C 60 VOLTS 2.5 KW

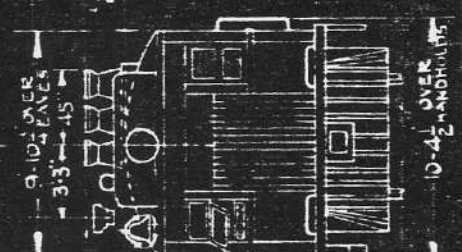
CONTROL EQUIPMENT
SINGLE END WITH T. K. 73-A CONTROLLER

AIR BRAKE
MAKE - WEST. A. B. CO.
SCHEDULE - A M M
COMPRESSOR - 1 - CP 17-A 20 CU FT.
CYL. SIZE - 12" X 12"
HAND BRAKE
HEATER - PEACOCK STAFFLESS
HEATER
~~HEATER - 5 H (CUSTOMER)~~
HEATER - 6 H (1150 ONLY)
FUEL TANK CAP. 150 GALS.

SEATING CAPACITY
PASSENGER COMPT 44
BAGGAGE COMPT 6
TOTAL 50

BAGGAGE CAP. 6000 LBS

WEIGHTS (WORKING ORDER) (1150)
AT FRONT TRUCK 47600 1150
AT REAR TRUCK 31060 10000
TOTAL 78720 176000



DR.
TR. W. P.
CH.

(A) (SEE EXT. INFO. SHEET)

DIAGRAM

SHEET #5

1150-1157

BOSTON AND MAINE RAILROAD

MECHANICAL DEPARTMENT
BOSTON

DIAGRAM

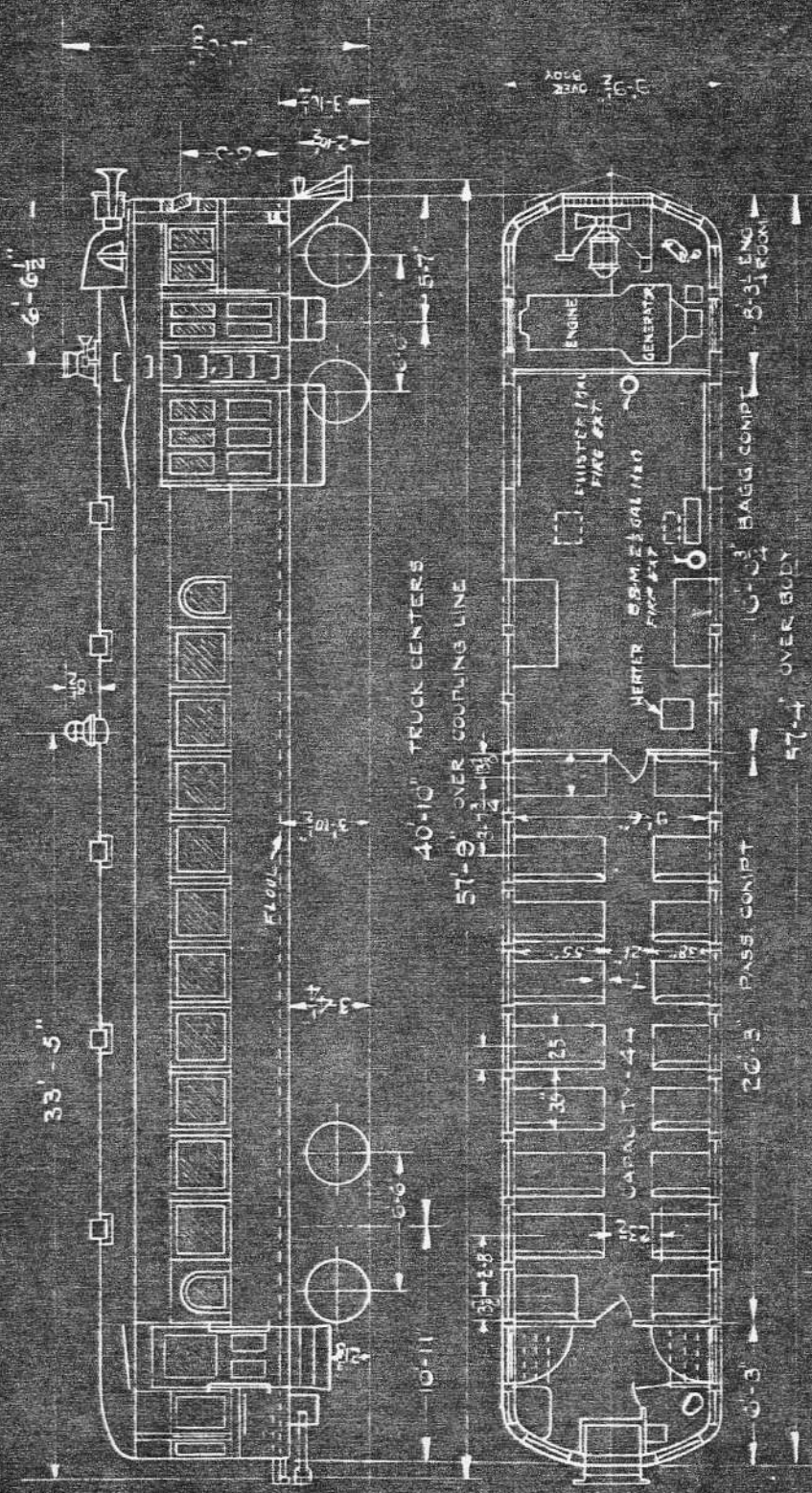
SHEET #5

APPROVED
MECH. ENGR.
C. M. D.

ISSUE
3-10-35
11-1-37: A

SUPERSEDING
21667-C

RAIL MOTOR CARS	LINE	DATE
1150-1157	1	



FRONT TRUCK (DRIVE)
MAKE - ELECTRO MOTIVE #23 EQUILIBZED
WHEELS - 33" DIA. ROLLED STEEL
JOURNALS - 4" X 8" AERA
TRACTION MOTORS - 2 - GE-24C-E - 100 HP

REAR TRUCK (TRAILER)
MAKE - ELECTRO MOTIVE #23 EQUILIBZED
WHEELS - 33" DIA. ROLLED STEEL
JOURNALS - 4" X 8" AERA

POWER PLANT (E.M. MODEL 106)
ENGINE - WINTON 106 - 200 HP
GENERATOR - GE-TDC-6-D 700 VOLTS 110 KW
EXITER - GE-ED-4-C 60 VOLTS 2.5 KW

CONTROL EQUIPMENT
SINGLE END WITH 1 - K-73-A CONTROLLER

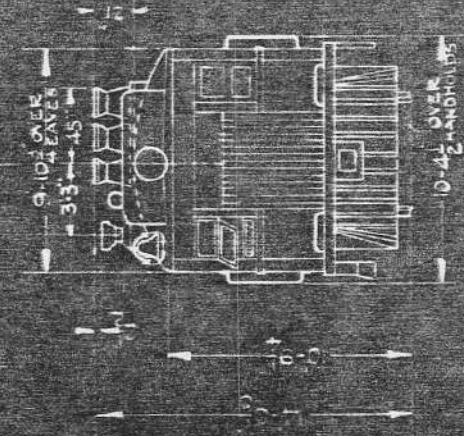
AIR BRAKE
MAKE - WEST. A. B. CO.
SCHEDULE - AMM
COMPRESSOR - 1 - CP-17-A 20 CU. FT.
CYL. SIZE - 12" X 12"
HAND BRAKE
HEATER - PEACOCK STAFFLESS
~~HEATER - SH (CUSTOMER)~~
AEROLA 6N (1150 ONLY)
FUEL TANK CAP. - 150 GALS.

EATING CAPACITY
PASSENGER COMPT 44
BAGGAGE COMPT 6
TOTAL 50

BAGGAGE CAP. 6000 LBS

WEIGHTS (WORKING ORDER) (1150)

AT FRONT TRUCK	47660	(1150)	46000
AT REAR TRUCK	31060	(1150)	30000
TOTAL	78720	(1150)	76000



DR.
TR. MAP
CH.

(A) FIRE EXT. INFO. ADDED

DIAGRAM

SHEET #5

1150-1157

BOSTON AND MAINE RAILROAD

MECHANICAL DEPARTMENT
BOSTON

DIAGRAM

SHEET #5 A

APPROVED

ISSUE

5-10-35

11-1-37

SUPERSEDING
21667-C

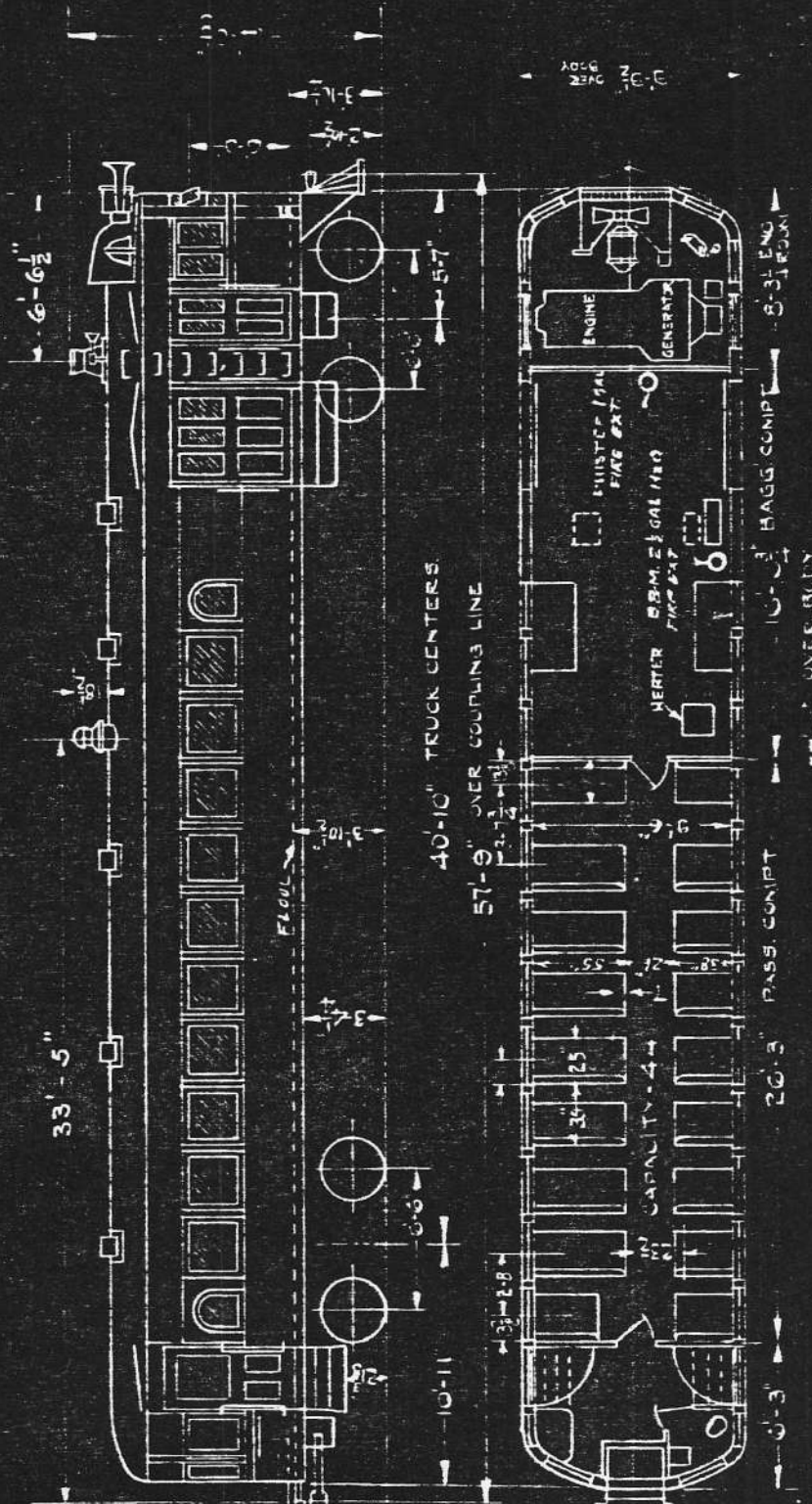
RAIL
MOTOR CARS

LINE

DATE

1150-1157

1



FRONT TRUCK DRIVE
MAKE - ELECTRO MOTIVE #23 EQUIPPED
WHEELS - 33" DIA. ROLLED STEEL
JOURNALS - 4 1/2" x 8" A.R.A.
TRACTION MOTORS - 2 - GE-240-E-100 HP.

REAR TRUCK (TRAILER)
MAKE - ELECTRO MOTIVE #23 EQUIPPED
WHEELS - 33" DIA. ROLLED STEEL
JOURNALS - 4 1/2" x 8" A.R.A.

POWER PLANT (E.M. MODEL 106)
ENGINE - WINTON 106 - 200 HP.
GENERATOR - GE-TDC-6-D 700 VOLTS 110 KW
EXCITER - GE-ED-4-C 60 VOLTS 2.5 KW

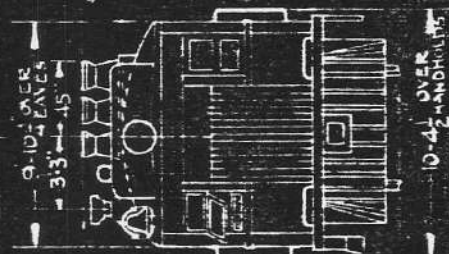
CONTROL EQUIPMENT
SINGLE END WITH 1 - K-73-A CONTROLLER

AIR BRAKE
MAKE - WEST. A. B. CO.
SCHEDULE - A.M.M.
COMPRESSOR - 1 - CP 17-A 20 CU FT.
CYL. SIZE - 12" x 12"
HAND BRAKE
HEATER - PEACOCK STAFFLESS
HEATER - PEACOCK STAFFLESS
FUEL TANK CAP. 150 GALS.

EATING CAPACITY
PASSENGER COMP. 44
BAGGAGE COMP. 6
TOTAL 50

BAGGAGE CAP. 6000 LBS

WEIGHTS (WORKING ORDER) (1150)
AT FRONT TRUCK 47660
AT REAR TRUCK 31060
TOTAL 78,720



DR.
TR. MAP
CH.

(A) FIRE EXT. INCL. ADDED

DIAGRAM

SHEET #5

1150-1157

BOSTON AND MAINE RAILROAD

MECHANICAL DEPARTMENT BOSTON & MAINE RAILROAD
 BOSTON HISTORICAL SOCIETY ARCHIVES

DIAGRAM

SHEET #7A

APPROVED *[Signature]*
 MECH. ENGR.
 SUPERSEDING
 21670-E

9-15-17
 11-1-17

RAIL MOTOR CARS LINE DATE

625 ELECTRIC #1176 6-5-35

FRONT TRUCK (DRIVE)
 MAKE - BRILL #27 MCB-3
 WHEELS - 33" DIA. ROLLED STEEL
 JOURNALS - 5x9 AERA
 TRACTION MOTORS - WEST. 557A-B 140 HP.

REAR TRUCK (TRAILER)
 MAKE - BRILL #27 MCB-3
 WHEELS - 33" ROLLED STEEL
 JOURNALS - 4 1/4 x 8 A.A.R.

POWER PLANT
 ENGINE - BRILL - WEST. 250 HP.
 GENERATOR - WEST. 176 - 600 VOLTS 160 KW.
 EXCITER - WEST. Y6-G 55 VOLTS 2.5 KW.

CONTROL EQUIPMENT WESTINGHOUSE.
 DOUBLE END - ELECTRO-PNEUMATIC.

AIR BRAKE
 MAKE - WEST. A.B. Co.
 SCHEDULE - A.M.L.
 COMPRESSOR - DM. 20 20 CU. FT.
 CYL. SIZE - 16" x 12"

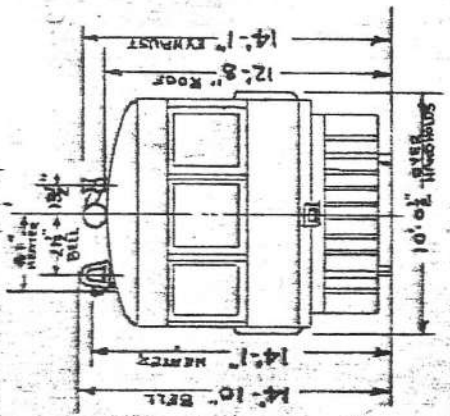
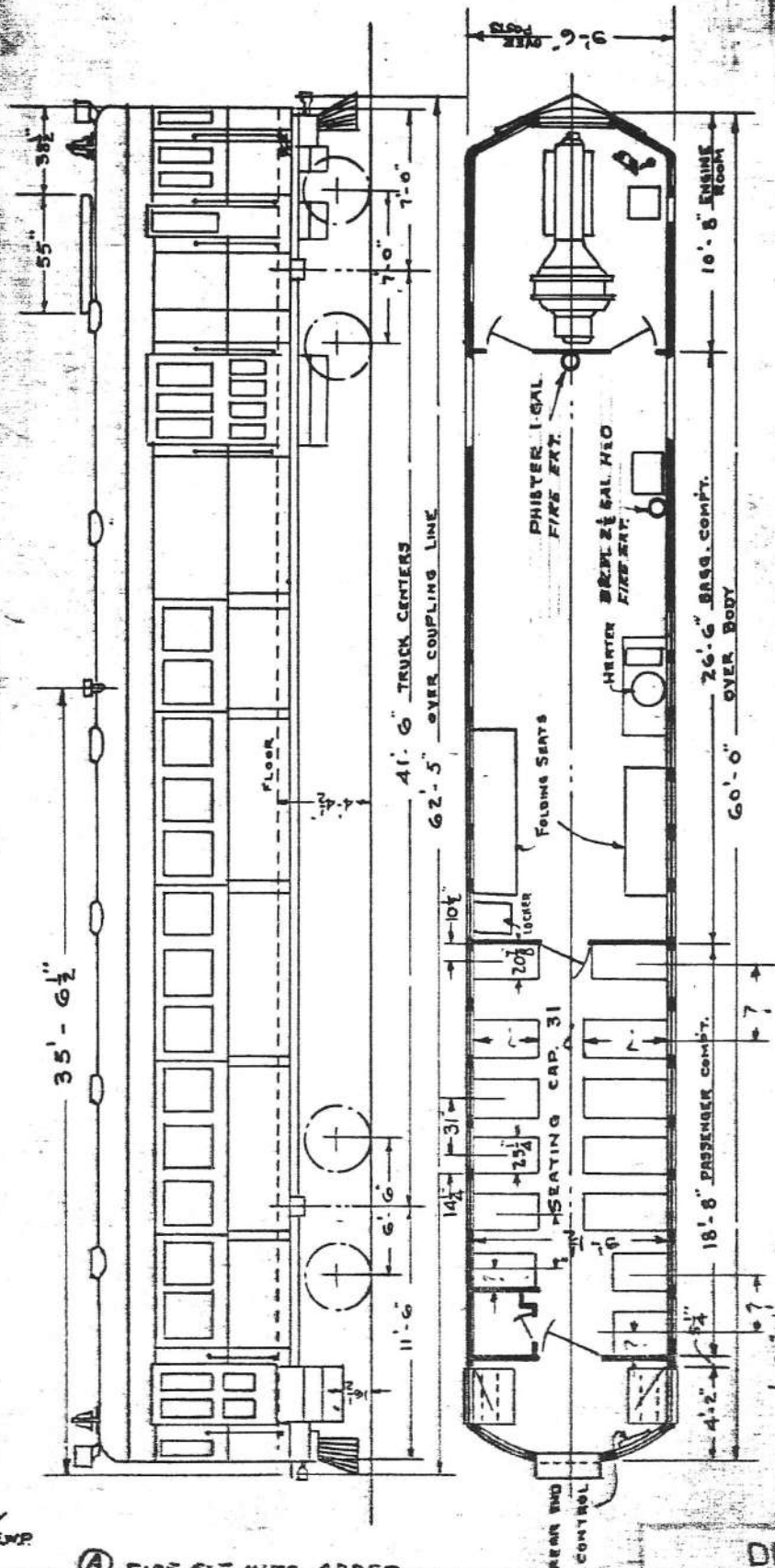
HEATER
 PETER SMITH. OC-2

FUEL TANK CAP. 150 GALS.

SEATING CAPACITY.
 PASSENGER COMPT. 31
 BAGGAGE COMPT. 40
 TOTAL 71

BAGGAGE CAP. 14000 LBS.

WEIGHTS (WORKING ORDER)
 AT FRONT TRUCK. 57900 LBS.
 AT REAR TRUCK. 36880 ..
 TOTAL. 94780 -



DIAGRAM

SHEET #7

(A) FIRE EXT. INER. ADDED

BOSTON AND MAINE RAILROAD ARCHIVES

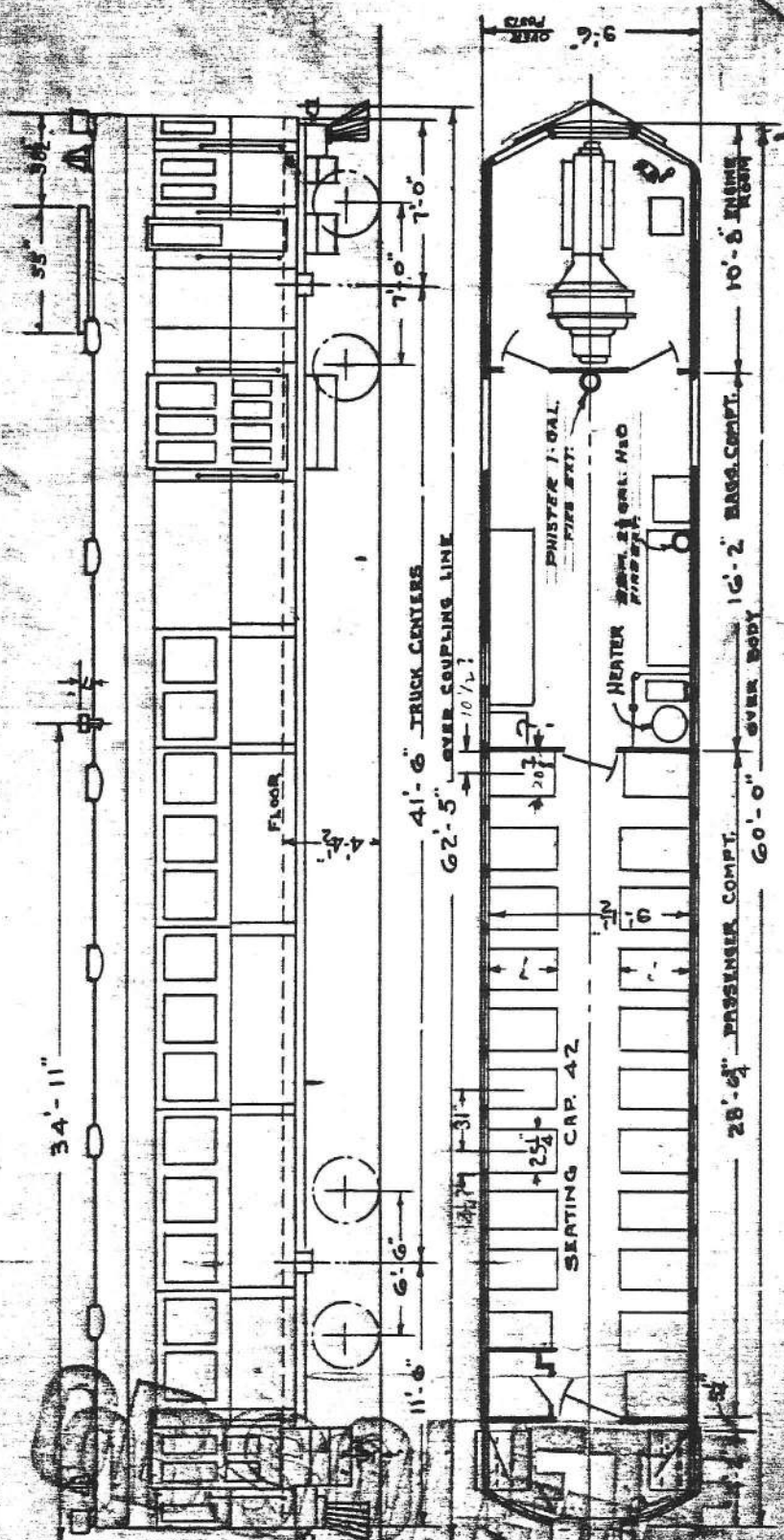
MECHANICAL DEPARTMENT
BOSTON

SHEET # 8 A

502 D
1/23/40
SUPERSEDED
21670-E

DIAGRAM

RAIL MOTOR CARS	LINE	DATE
GAS ELECTRIC # 1171		5-23-35



FRONT TRUCK (DRIVE)
MAKE - BRILL 27 MCB-5
WHEELS - 35 ROLLED STEEL
JOURNALS - 5 X 8 A.R.A.
TRACTION MOTORS - WEST. 557-A-B 140 HP

REAR TRUCK (TRAILER)
MAKE - BRILL 27 MCB-3
WHEELS - 35 ROLLED STEEL
JOURNALS - 4 1/4 X 8" A.R.A.

POWER PLANT
ENGINE - BRILL - WEST. 250 HP
GENERATOR - WEST. 176 - 600 VOLTS 160 KW
EXCITER - WEST. YG - 6 38 VOLTS 2.5 KW

CONTROL EQUIPMENT - WESTINGHOUSE.
DOUBLE END - ELECTRO-PNEUMATIC.

AIR BRAKE
MAKE - WEST A.B. CO
SCHEDULE - A.M.L.
COMPRESSOR - DH-20 20 CUFT.
CYL. SIZE - 16" X 12"

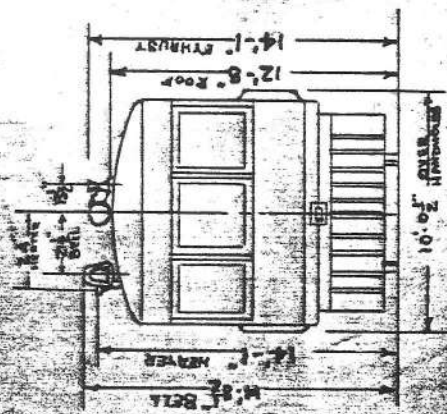
HEATER
PETER SMITH. OC-2

FUEL TANK CAP. 150 GALS.

SEATING CAPACITY
PASSENGER COMPT. 42
BAGGAGE COMPT. 7
TOTAL 49

BAGGAGE CAP. 10000 LBS.

WEIGHTS (WORKING ORDER)
AT FRONT TRUCK. 60100 LBS.
AT REAR TRUCK. 40100 LBS.
TOTAL. 100200 LBS



DR. ✓
TR. EWR
CH.

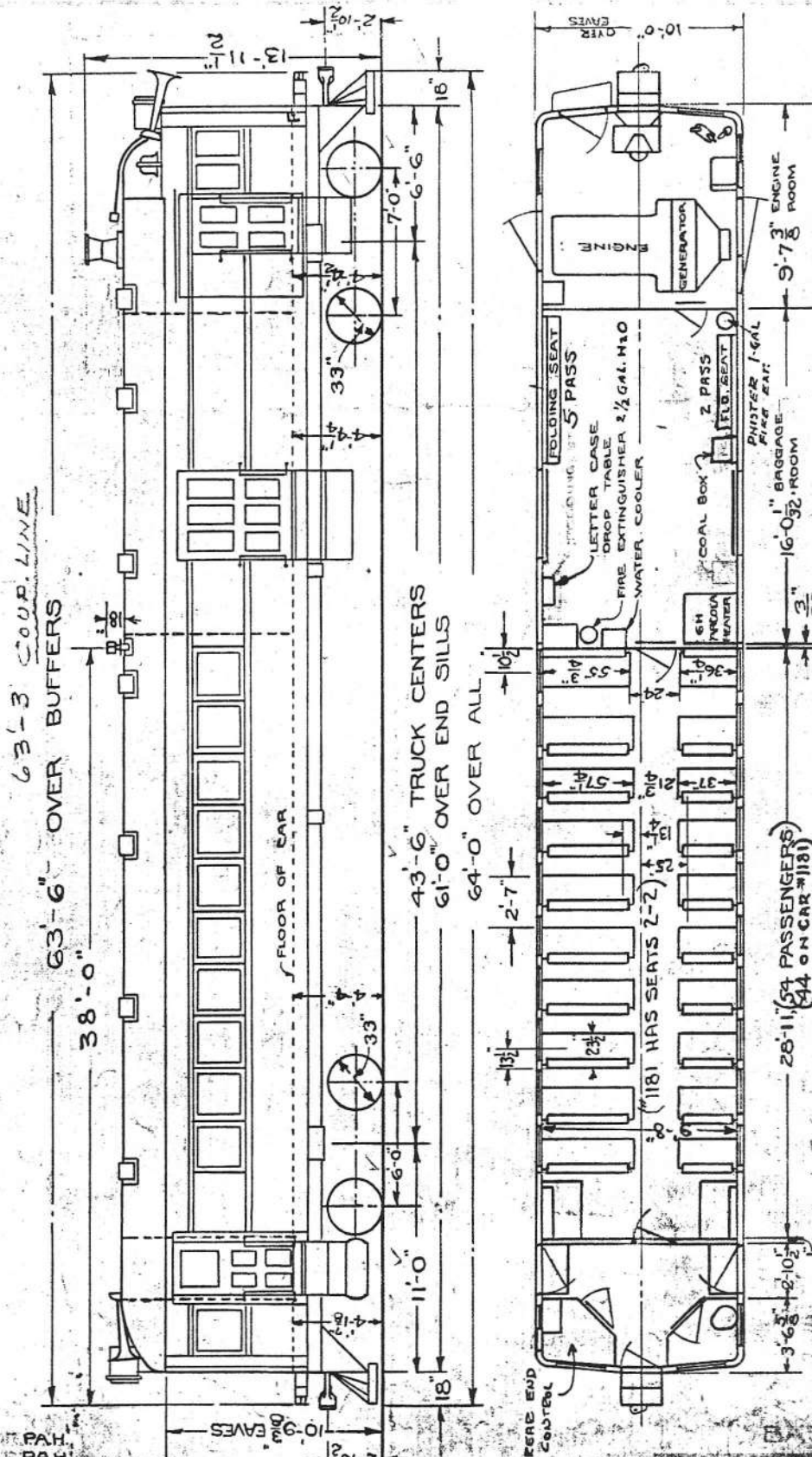
(A) FIRE EXT. INFO. ADDED

DIAGRAM

SHEET 8

Richardson
 9-10-35
 11-1-37A
 11-2-32B

DIAGRAM



CARS	LINE DATE
GAS-ELECTRIC	1 3-6-28
1180-1183, 1185, 1187	
181-182 185 & 187	

DRIVE TRUCK
 MAKE - COMMONWEALTH STEEL
 WHEELS - 33" FORGED STEEL
 JOURNALS - 5" x 9" AERA
 TRACTION MOTORS - G.E. 254-A
 150 H.P.

POWER PLANT - F.M. MODEL 120
 ENGINE - WINTON 120 275 H.P.
 GENERATOR - G.E. DT. 507-A
 735 V. - 180 K.W.
 EXCITER - G.E. T.E. 507-A
 60 V. - 4 K.W.

FUEL TANK CAP. 200 GALS.
 EM - " " 50 "

CONTROL EQUIPMENT
 DOUBLE END WITH TWO
 K-76-A CONTROLLERS

AIR BRAKE
 MAKE - WEST. ABC CO.
 SCHEDULE - AMM
 COMP. CP-127-A-1 20CU.FT.
 CYL. SIZE. 14" x 12"

SEATING CAPACITY
 PASSENGER COMPARTMENT 54
 BAGGAGE " 7
 TOTAL 61

181
 1181 HAS 2-2 SEATS
 PASS. COMP. 44
 TOTAL 54

182 EQUIPPED WITH CAB SIGNAL
 HEATER
 ARCOLA - 6H
 ARCOLA - 5H (1180 ONLY)
 # 1182 EQUIPPED WITH TRAIN CONTROL

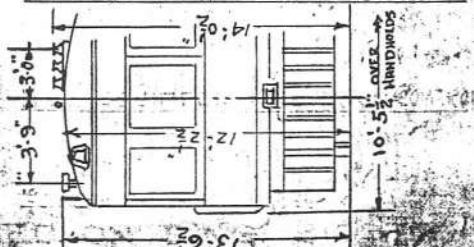
TRAILER TRUCK
 MAKE - COMM. STEEL
 WHEELS - 33" FORGED STEEL
 JOURNALS - 4 1/4" x 8" A.R.

WEIGHTS - WORKING ORDER

	AT MOTOR TRK.	TRAILER TRK.	TOTAL
180	59000	35300	94300
181 181	60000	36500	96500
182 182	60000	36300	96300
1183	59750	35750	95500
185 185	60000	36400	96400
187 187	59500	35500	95000

1 TRAILER

BAGGAGE CAPACITY 6500#



BOSTON AND MAINE RAILROAD

MECHANICAL DEPARTMENT BOSTON & MAINE RAILROAD
 BOSTON HISTORICAL SOCIETY ARCHIVES

DIAGRAM

SHEET # 1186

APPROVED *[Signature]*
 DATE 12-10-32
 12-21-32
 1-5-33

SUPERSEDED

CARS	LINE	DATE
GAS ELEC. 1186	1	1-26-32

SC
 174/47

DRIVE TRUCK
 MAKE - COMMONWEALTH STEEL
 WHEELS - 33" FORGED STEEL
 JOURNALS - 5" x 9" AERA
 TRACTION MOTORS - G.E. 254-A
 150 H.P.

POWER PLANT - E.M. MODEL 120
 ENGINE - WINTON 120 - 275 H.P.
 GENERATOR - G.E. DT. 507-A
 735 V. - 180 K.W.
 EXCITER - G.E. TE. 507-A
 60 V. - 4 K.W.

FUEL TANK CAP. 250 GALS.
 EM " " 300 GALS.

CONTROL EQUIPMENT
 SINGLE END WITH T-K-76-A
 CONTROLLER

AIR BRAKE.
 MAKE WEST.A.B.CO
 SCHEDULE. AMM
 COMP. CP-127-A-1.20 CU.FT
 CYL. SIZE. 14"x12"

PHENIX DRY
 FIRE EXT.

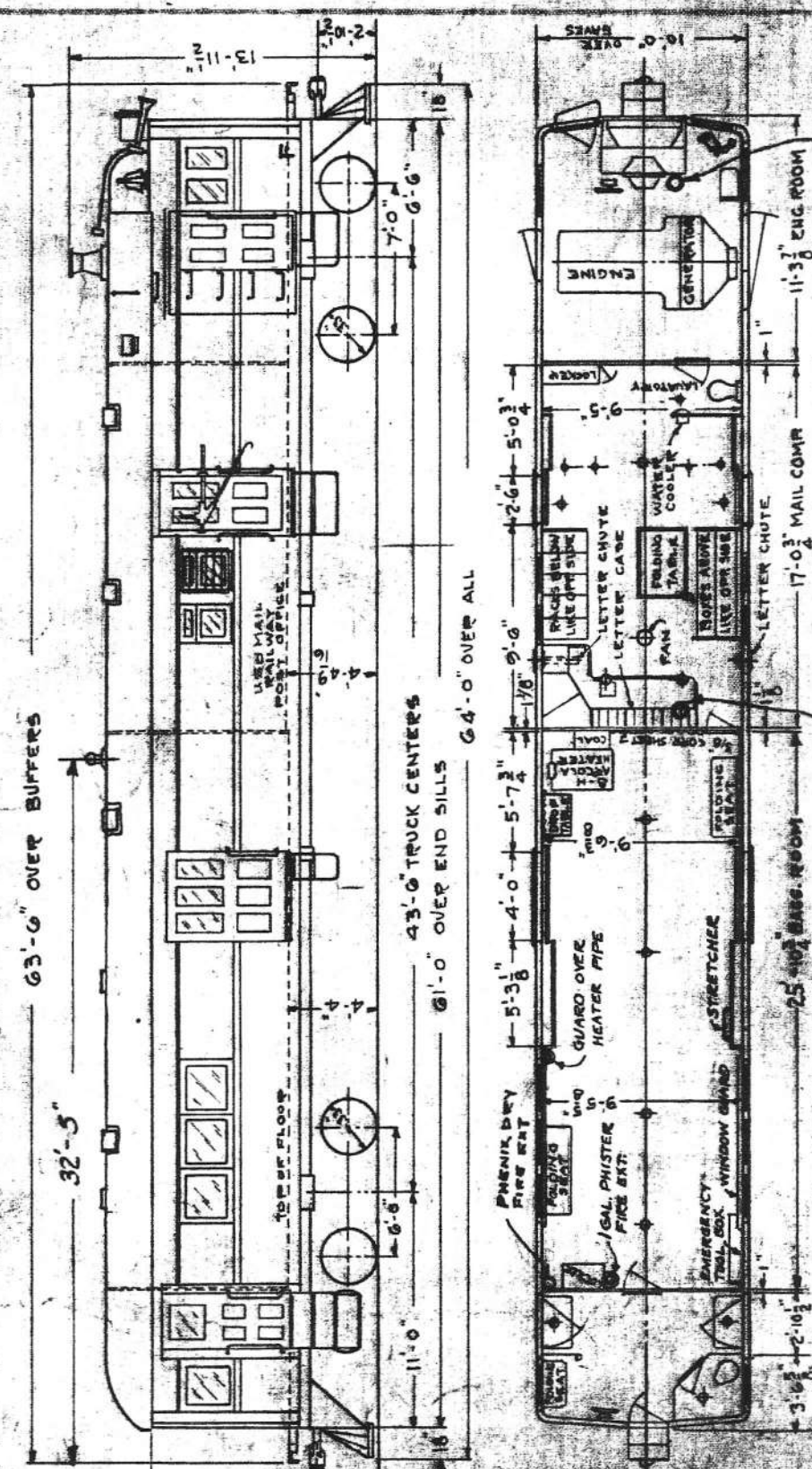
BAGGAGE CAP. 12,000 lbs.

SEATING CAPACITY
 BAGGAGE COMPARTMENT - - - 8.

HEATER
 ARCOLA - 3 H

TRAILER TRUCK
 MAKE - COMMONWEALTH STEEL
 WHEELS - 33" FORGED STEEL
 JOURNALS - 4 1/4" x 8" A.A.R.

WEIGHT (WORKING ORDER)
 AT MOTOR TRUCK 66,500
 AT TRAILER TRUCK 39,220
 TOTAL 105,720



DR. 004
 TR
 CH

RE-ENUMERED FROM 22032-00

441

DIAGRAM

SHEET # 11

(A) FIRE EXT. INFO ADDED (B) CHANGES MADE IN BAGG. COMP.

DIAGRAM

21671-D

RAIL MOTOR CARS LINE DATE

GAS ELECTRIC
1190

6-7-35

FRONT TRUCK (DRIVE)
MAKE: BRILL #27 MCB-4
WHEELS: 33" DIA ROLLED STEEL
JOURNALS: 5 1/2 x 10 AERA
TRACTION MOTORS: WEST. 557-D-8 140 HP

REAR TRUCK (TRAILER)
MAKE: BRILL #27 MCB-3
WHEELS: 33" ROLLED STEEL
JOURNALS: 5 x 9 A.A.R.

POWER PLANT
ENGINE: BRILL-WEST. 250 HP
GENERATOR: WEST. 17G-600 VOLTS 160 KW
EXCITER: WEST. YG-6 38 VOLTS 2.5 KW

CONTROL EQUIPMENT
DOUBLE END - ELECTRO-PNEUMATIC.

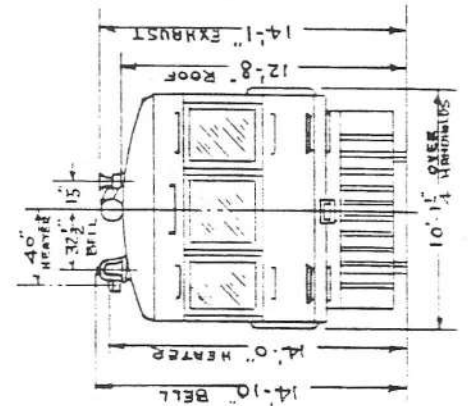
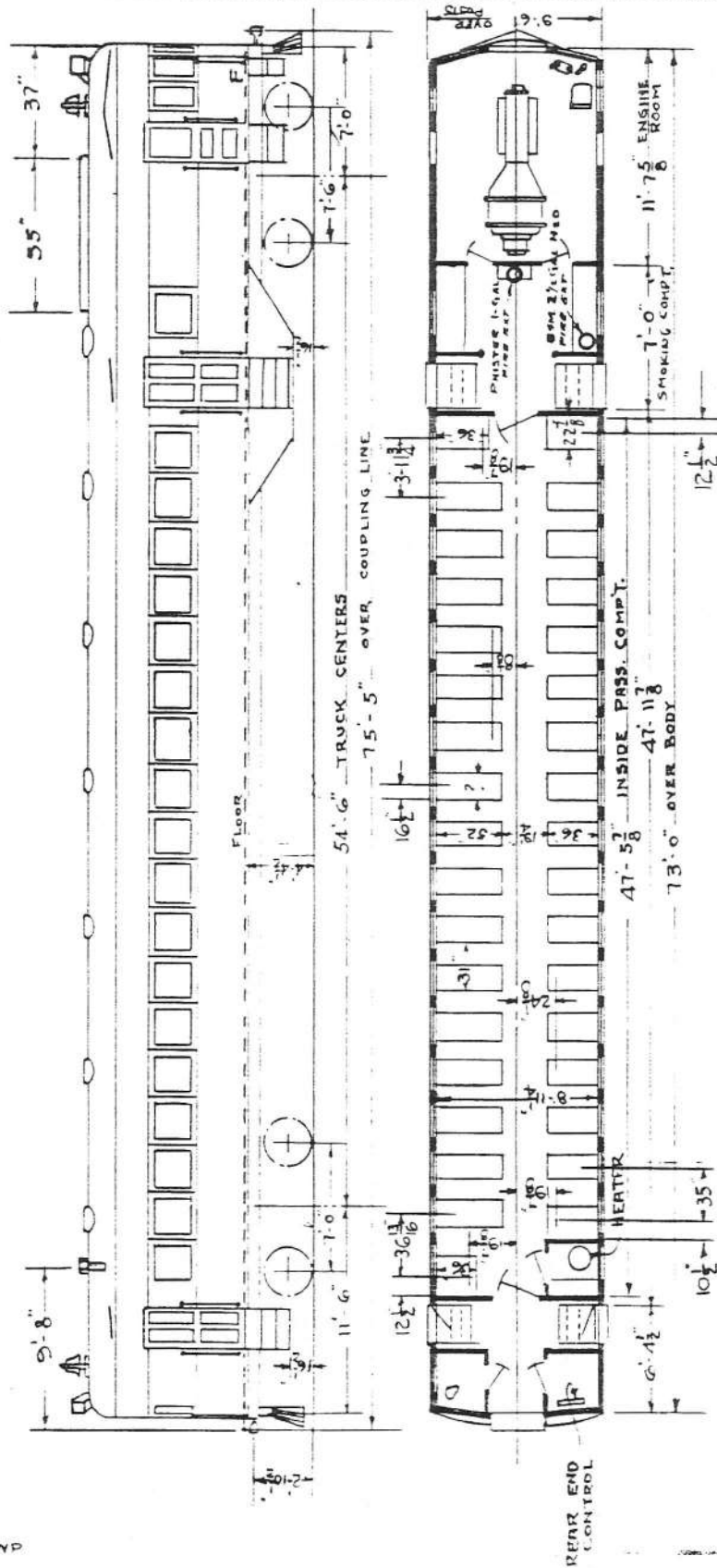
AIR BRAKE
MAKE: WEST. A.B. CO
SCHEDULE: A M E
COMPRESSOR: D.M. 20 20 CU. FT.
CYL. SIZE: 18 x 12"

HEATER
PETER SMITH. OC-2

FUEL TANK CAP. 150 GALS.

SEATING CAPACITY
PASSENGER COMPT. 86
SMOKING COMPT. 6
TOTAL 92

WEIGHTS (WORKING ORDER)
AT FRONT TRUCK. 65740 LBS
AT REAR TRUCK. 46240 "
TOTAL. 111980 "



BOSTON AND MAINE RAILROAD

MECHANICAL DEPARTMENT
 BOSTON BOSTON & MAINE RAILROAD
 HISTORICAL SOCIETY

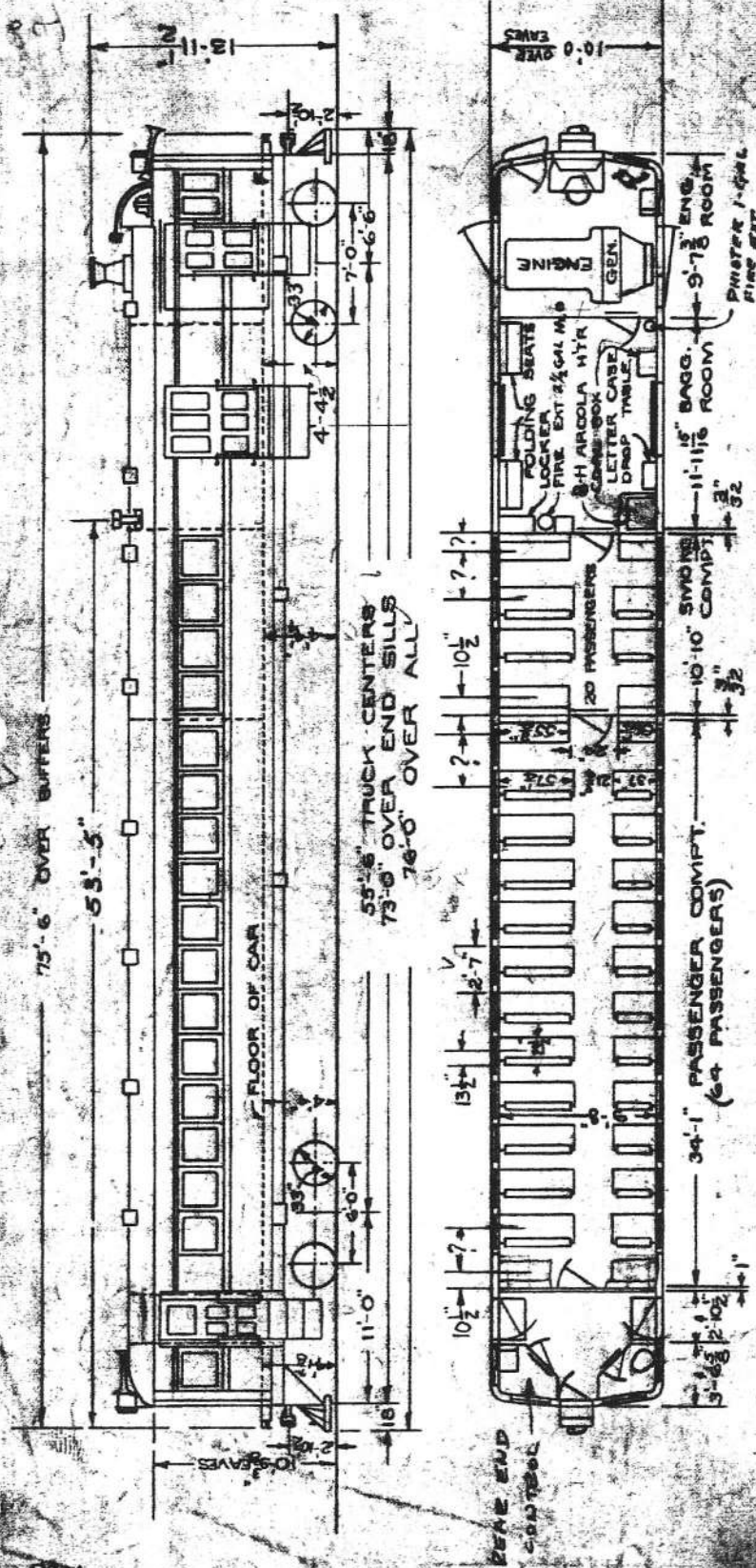
SHEET 488 B

APPROVED *[Signature]*
 MECH. ENGR.
 MECH. SUPT.

ISSUED
 7-52-B

TRUCK END FIELD DIAGRAM FLOOR PLAN

CARS	LINE DATE
GAS-ELECTRIC 195 AND 196	1-3-8-28

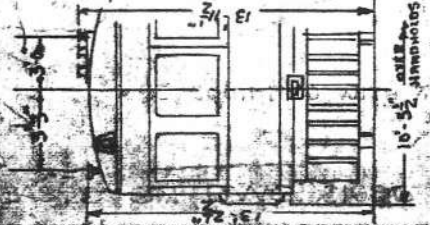


- DRIVE TRUCK**
 MAKE - COMMONWEALTH STEEL
 WHEELS - 33" FORGED STEEL
 JOURNALS - 5 1/2" x 10" AERA.
 TRACTION MOTORS - G.E. 254-A
 150 H.P.
- JOURNALS** - 5 1/2" x 10" - FAFNIR ROLLER BEARING
- POWER PLANT** - EM. MODEL 120
 ENGINE - WINTON 120 - 275 H.P.
 GENERATOR - G.E. DT. 507-A
 735 V. - 180 KW.
 EXCITER - G.E. TE. 507-A
 60 V. - 4 KW.
- FUEL TANK CAP.** 250 GALS.
 EM. " " 30 "
- CONTROL EQUIPMENT**
 DOUBLE END WITH TWO
 K-70-A CONTROLLERS
- AIR BRAKE**
 MAKE - WEST. A.B. CO.
 SCHEDULE - AMM
 COMP. CP-127-A-1 20CU. FT.
 CYL. SIZE. 16x12"
- SEATING CAPACITY**
 PASSENGER COMPARTMENT 64
 SMOKING " 20
 BAGGAGE " 4
 TOTAL 88

- HEATER**
 ARCOLA - 8 H
- 195
 196 EQUIPPED WITH TRAIN CONTROL
 190 " " CAB SIGNAL

- TRAILER TRUCK**
 MAKE - COMMONWEALTH STEEL
 WHEELS - 33" FORGED STEEL
 JOURNALS - 4 1/4" x 8" AAR
- WEIGHT (WORKING ORDER)**
 AT MOTOR TRUCK 64500 lbs.
 AT TRAILER TRUCK 39200
 TOTAL 103700 "
- WEIGHT (WORKING ORDER)**
 AT MOTOR TRUCK 67400 lbs.
 AT TRAILER " 40900
 TOTAL 108300 "

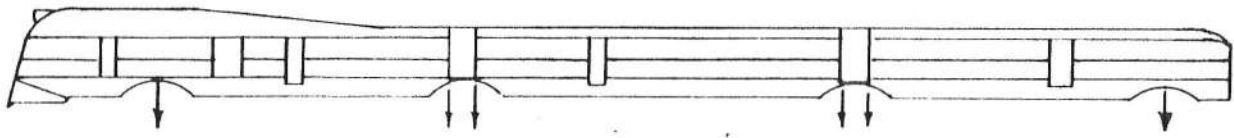
BAGGAGE CAPACITY 4500 "



RAY
 RAY
 W.P.
 FIRE EXT. INFO. ADDED
 6-21-35 RENUMBERED FROM 21765-AB

EMP

(D) HEIGHT OF CENTER OF GRAVITY AT ENGINE APPROX. 54" ; REMAINDER OF TRAIN 52 1/2" ABOVE RAIL.



BODY REACTIONS.

DEAD LOAD, DRY.	65712	71627	15309	17684	13441	14184	17237
NORMAL MAX. LIVE LOAD.	9223		7313	5880	5880	3784	4810
NORMAL MAX. GROSS LOAD.	74935	80850	22622	23564	19321	17968	22047

CENTER PLATE REACTIONS

	TRUCK #1	TRUCK #2	TRUCK #3	TRUCK #4
DEAD LOAD, DRY.	65712	71627	32993	17237
SUPPLIES	4543		4593	359
READY-TO-RUN LOAD.	70255	76170	37586	17596
NORMAL MAX. LIVE LOAD.	9223		13193	4810
NORMAL MAX. GROSS LOAD.	74935	80850	46186	22047

TRACK REACTIONS

TRUCK WEIGHT.	26500		13700	13500	10600
DEAD LOAD DRY GROSS	92512	98427	46893	40825	27637
READY TO RUN LOAD	96755	102670	104340	51286	28196
NORMAL MAX. GROSS LOAD.	101435	107350	109020	59886	32647

SUMMARY

WEIGHT OF EMPTY BODIES	143567	149482	151152
TRUCK WEIGHT.	64300		
TOTAL DEAD WEIGHT OF TRAIN	207867	213782	215452
LIVE LOAD.			
PASS. & LUGGAGE.	21840		
BAGGAGE.	4000		
ENGINE SUPPLIES.	5150		
GENERAL SUPPLIES.	5900	36850	
READY-TO-RUN TRAIN WEIGHT AT RAIL.	218017	224832	226502
NORMAL MAX. GROSS WEIGHT OF TRAIN.	244754	250669	252342

STREAMLINE
DIESEL ELECTRIC
ARTICULATED
RAIL MOTOR CAR
6000

1 9/16
1/35

CARS LINE DATE

WEIGHT DISTRIBUTION

PORTON & MANN RAILROAD
HISTORICAL SOCIETY
ARCHIVES

SHEET # 15 622

Handwritten signature

9-18-35
10-5-39-B
11-30-44-C
9-24-45-D

WEIGHT DISTRIBUTION SHEET # 15

(A) 1670* ADDED AT FRONT ACT. OF TR. CONTROL

(B) 595* ADDED AT FRONT ACT. OF ALTERATIONS.

BOSTON AND MAINE RAILROAD

MECHANICAL DEPARTMENT BOSTON & MAINE RAILROAD
BOSTON HISTORICAL SOCIETY

DIAGRAM

ARCHIVES

SHEET # 15 OF 16

DATE	5-19-35
BY	J. H. B. A.
REVISION	12-20-35
BY	J. H. B. A.
REVISION	2-20-35
BY	J. H. B. A.
REVISION	5-17-35
BY	J. H. B. A.

RAIL MOTOR CARS	LINE DATE
DIESEL ELECTRIC	1-2-35
M.E.C. # 201	

ORD. NO. 1559

FRONT TRUCK (DRIVE)
 MAIN GENERAL STEEL CASTING CORP'N. 6 WHEEL
 WHEELS - 36" DIA. ROLLED STEEL
 JOURNALS - 12" DIA. GIRL "133 AREA GIRL"
 TRACTION MOTORS - TWO - G.E. 715-A

REAR TRUCK (DRIVE)
 MAIN GENERAL STEEL CASTINGS CORP. - 4 WHEEL
 WHEELS - 36" DIA. ROLLED STEEL
 JOURNALS - 12" DIA. GIRL
 TRACTION MOTORS - TWO - G.E. 715-A

POWER PLANT
 ENGINES - TWO - WATSON-L-RAND - 300 HP EACH.
 GENERATOR - MAIN TWO - G.E. D.F. 315 - 500 WATTS. BOOSTER ONE -
 GENERATOR - AUX. TWO - G.E. TR. 515 - 125 VOLTS - 1500 RPM.

CONTROL EQUIPMENT
 SWOLE END OF TRUCK

AIR BRAKE
 AIR BRACKETS - 2 - 1/2" DIA. STEEL
 AIR LINES - 1/2" DIA. STEEL
 AIR VALVES - 1/2" DIA. STEEL
 AIR HOSES - 1/2" DIA. STEEL
 AIR TUBES - 1/2" DIA. STEEL

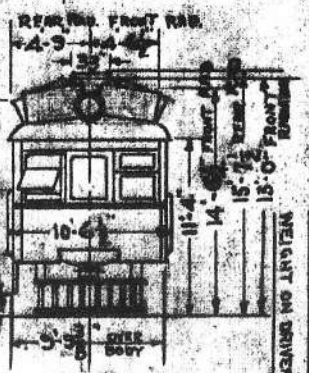
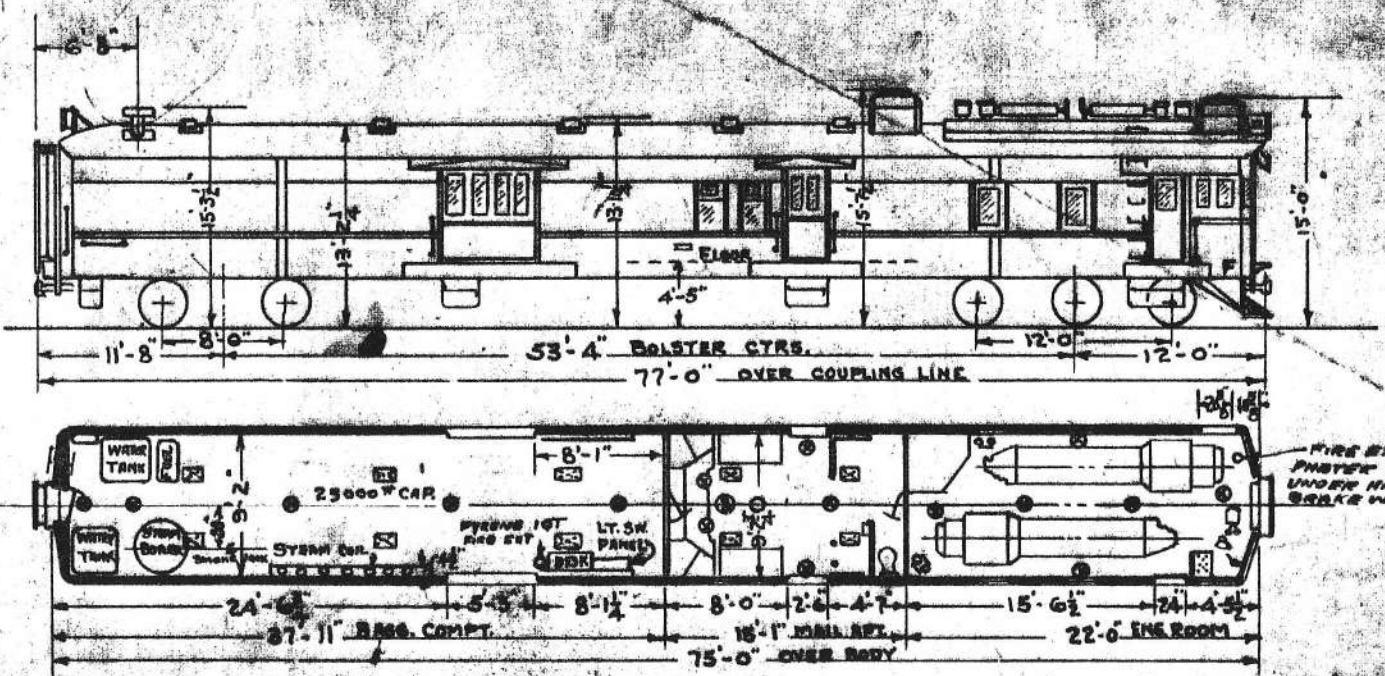
WAGON END WHEELS OR "A" AXES - 5 STEEL WHEELS

FUEL TANK OPERATORIES
 ENGINE TWO - 250 GALS CAP.
 STEAM BOILER, PNT. 100 GAL.

WATER TANK OPERATORIES
 ENGINE COALING TWO - 500 GALS EACH
 STEAM PUMPS TWO - 422 GALS. EACH

WEIGHTS (INCLUDING OILS)
 MT FRONT TRUCK 143,500 LBS.
 MT REAR TRUCK 212,500 LBS.
 TOTAL 356,000 LBS.

PACKAGE COMPT. CAR 25,000 LBS.
 MAIL PNT. CAB 5,000 LBS.
 WEIGHT ON DRIVERS 187,300 LBS.



Handwritten: WORK CRP # 250

Handwritten: FOR ELEV

Handwritten: See 4483-P-1

Handwritten: 4/24/39

- F Wgt on Drivers Corrected
- E Wgt's Corrected
- D Fire ext. into. Added
- C HP Changed from 325 to 300 Frak.
- B Air Brake Schedule Changed from GBC.

DIAGRAM

SHEET # 15

DIAGRAM

ARCHIVES

SUPERSEDED BY
21681-B

RAIL MOTOR CARS LINE DATE

TRAILER
~~#1050~~ 18-43

TRUCKS. SYKES
WHEELS. 30" DIA ROLLED STEEL
JOURNALS. ROLLER BEARING (HYATY)
BRAKE BEAMS SYKES

UNDERFRAME - STEEL
BODY BOLSTER. STEEL
PLATFORM. STEEL
BODY. STEEL

AIR BRAKE. W. A. B. CO.
STYLE. A M M
CYL. SIZE 8 X 12
HAND BRAKES. - DAYTON

DRAFT GEAR. SPRING
BUFFING GEAR. SPRING
COUPLER. VAN DORN. 2155 DWG. 1910

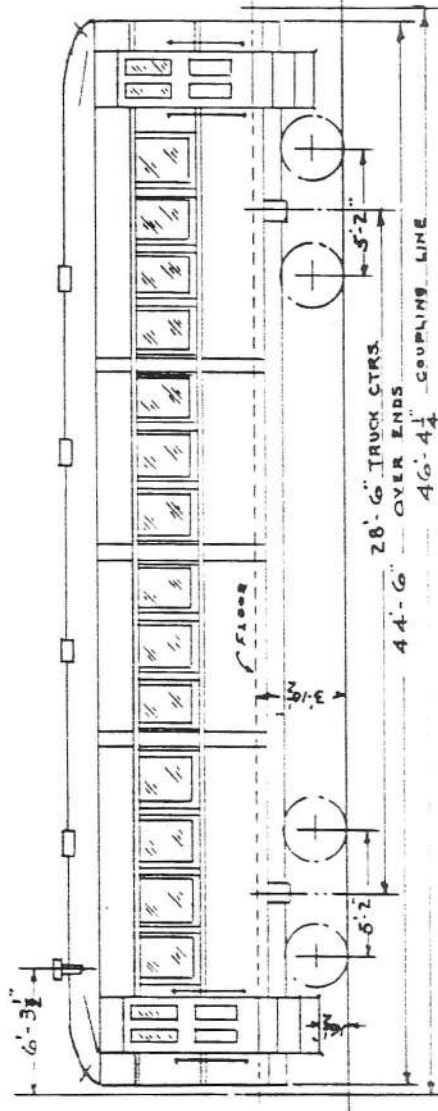
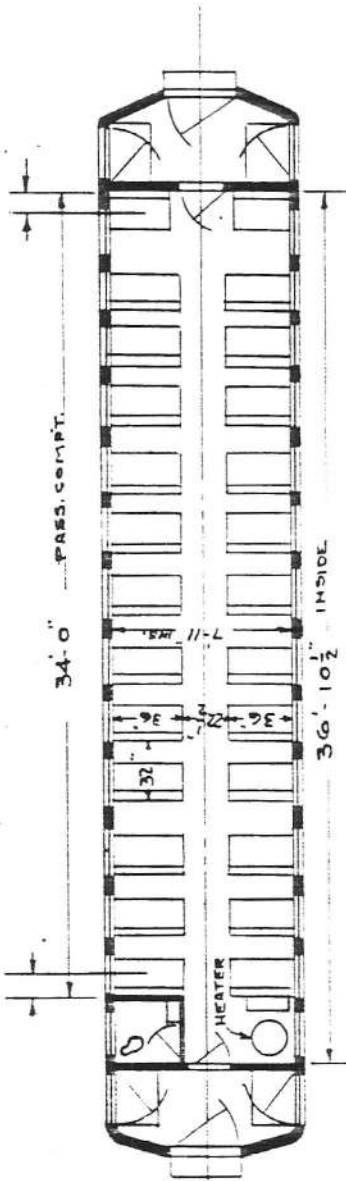
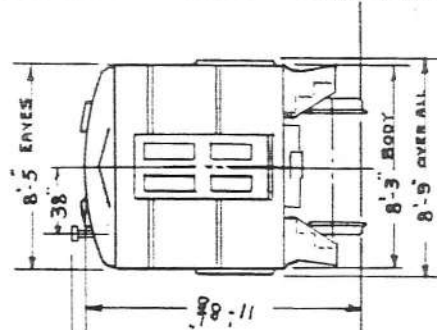
VENTILATORS. GARLAND
HEATER. PETER SMITH 2 C

LIGHTING. EMT.
WATER COOLER. DAYTON

HOPPER. DRY

TRAP DOORS.

SEATING CAP.	52
WEIGHT. BODY.	30800 LBS.
TRUCKS	9000
TOTAL	39800



EWP

BOSTON AND MAINE RAILROAD

MECHANICAL DEPARTMENT & MAINE RAILROAD
BOSTON HISTORICAL SOCIETY ARCHIVES

SHEET T-2

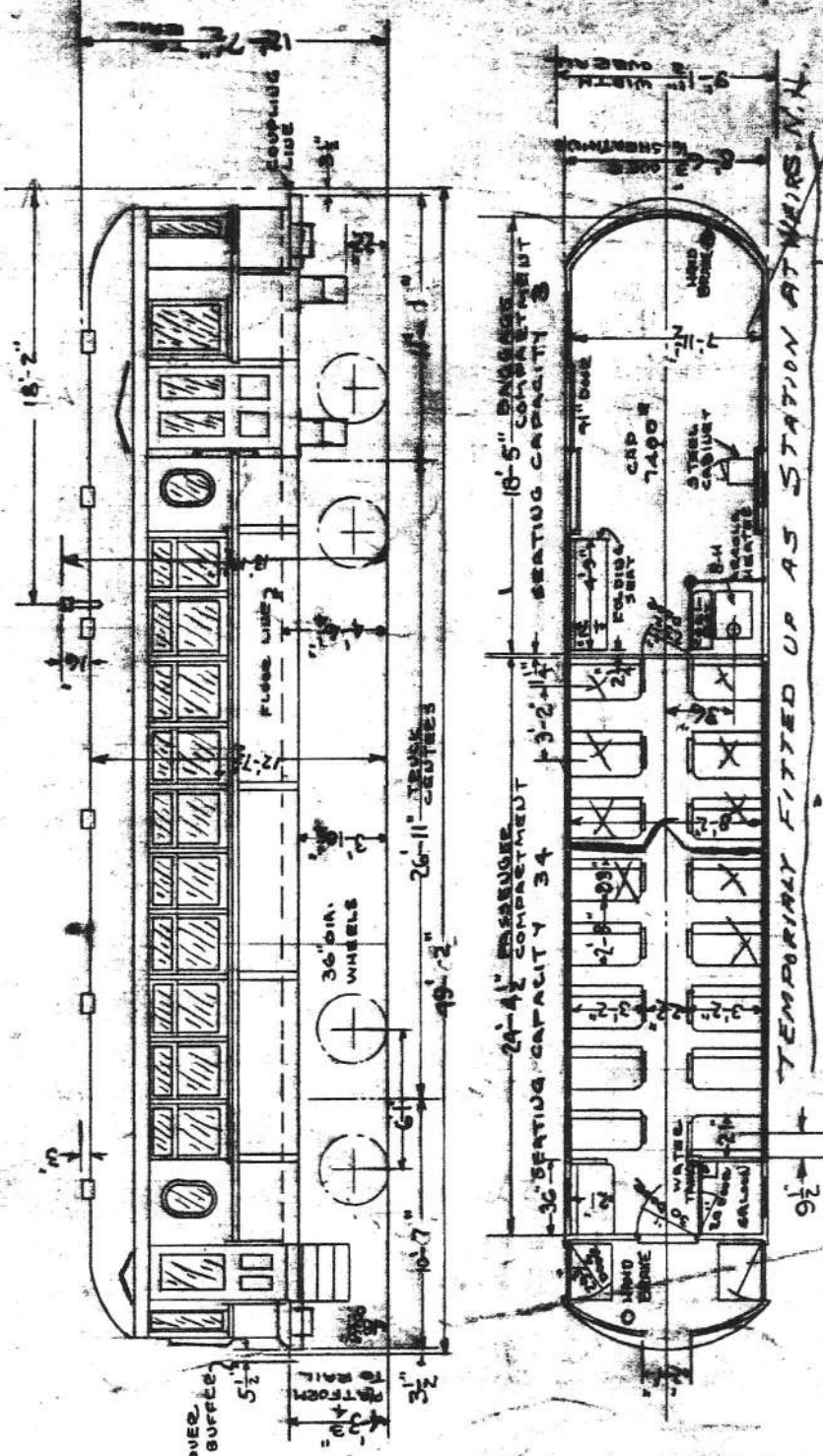
APPROVED

SUPERSEDING

DIAGRAM - LACONIA TRAILER

(CONVERTED FROM WHITE RIVER Ry. CAR #101)

CBS	LINE	DATE
TRAILER #1060	1	10-8-31



TRUCKS. B. & M. IRON & WOOD
WHEELS - 36" DIA. STEEL
JOURNALS - 4 1/2" X 8"
BRAKE BEAMS.
UNDERFRAME - STEEL
BODY BOLSTER - STEEL
PLATFORM - STEEL
BODY - STEEL

AIR BRAKE W.A.B. CO.
STYLE - PM-1
CYLINDER SIZE - 10"x12"
HANDBRAKE - BLACKALL.
DRAFT GEAR - B & M.
BUFFING GEAR - B & M.
COUPLER - TOWER 5" x 5"

VENTILATORS - GLOBE
HEATER - ARCOLA B.H.
LIGHTING - E.M.T.
BATTERIES - NONE

WATER COOLER - B & M
HOPPER - DRY
TRAP DOORS. -

SEATING CAP. PASS. 34
" " BAGG. 3
TOTAL 37
BAGG. CAPACITY. 7400#

WEIGHTS

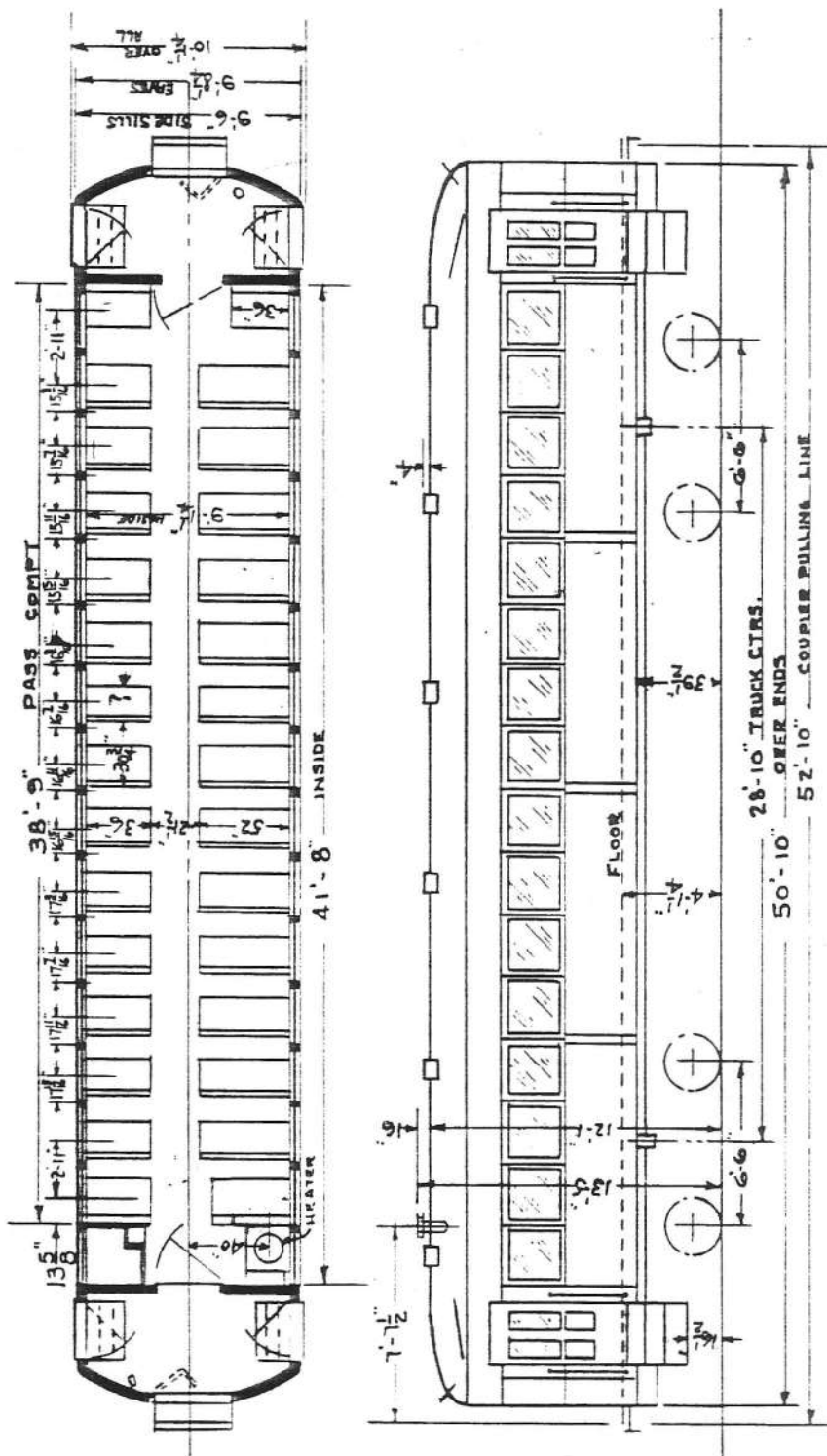
BODY - 39000 LBS.
TRUCKS - 8000 "
TOTAL - 47000

0723
0727

DIAGRAM

RAIL MOTOR CARS LINE DATE

TRAILERS 1070-1071 | 7-23-35



TRUCKS. BRILL 27-MC82
 WHEELS. 33" DIA.
 JOURNALS. 4/4x8
 BRAKE BEAMS. BRILL

UNDERFRAME. STEEL
 BODY BOLSTER. STEEL
 PLATFORM. STEEL
 BODY. STEEL

AIR BRAKE. WAB CO.
 STYLE. ATM
 CYLINDER. 10x12
 HAND BRAKES. DAYTON DROP HANDLE # 35

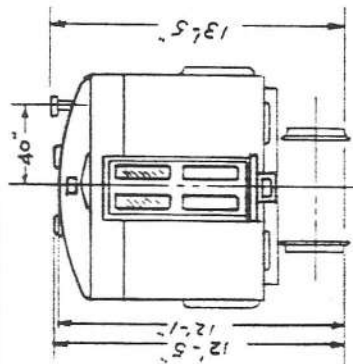
DRAFT GEAR. SPRING
 BUFFING GEAR. SPRING
 COUPLERS. N.M.&S.C.C.O. 13705-37R

VENTILATORS. BRILL.
 HEATER. PETER SMITH. OC2A

LIGHTING. EMT. 17-25 WATT
 WATER COOLER. GIESEL-BRILL
 HOPPER. DRY.

TRAP DOORS. O MEDWARDS 3V

SEATING CAP. 74
 WEIGHT - BODY - 33400 LBS.
 " TRUCKS. 14200
 " TOTAL 47600

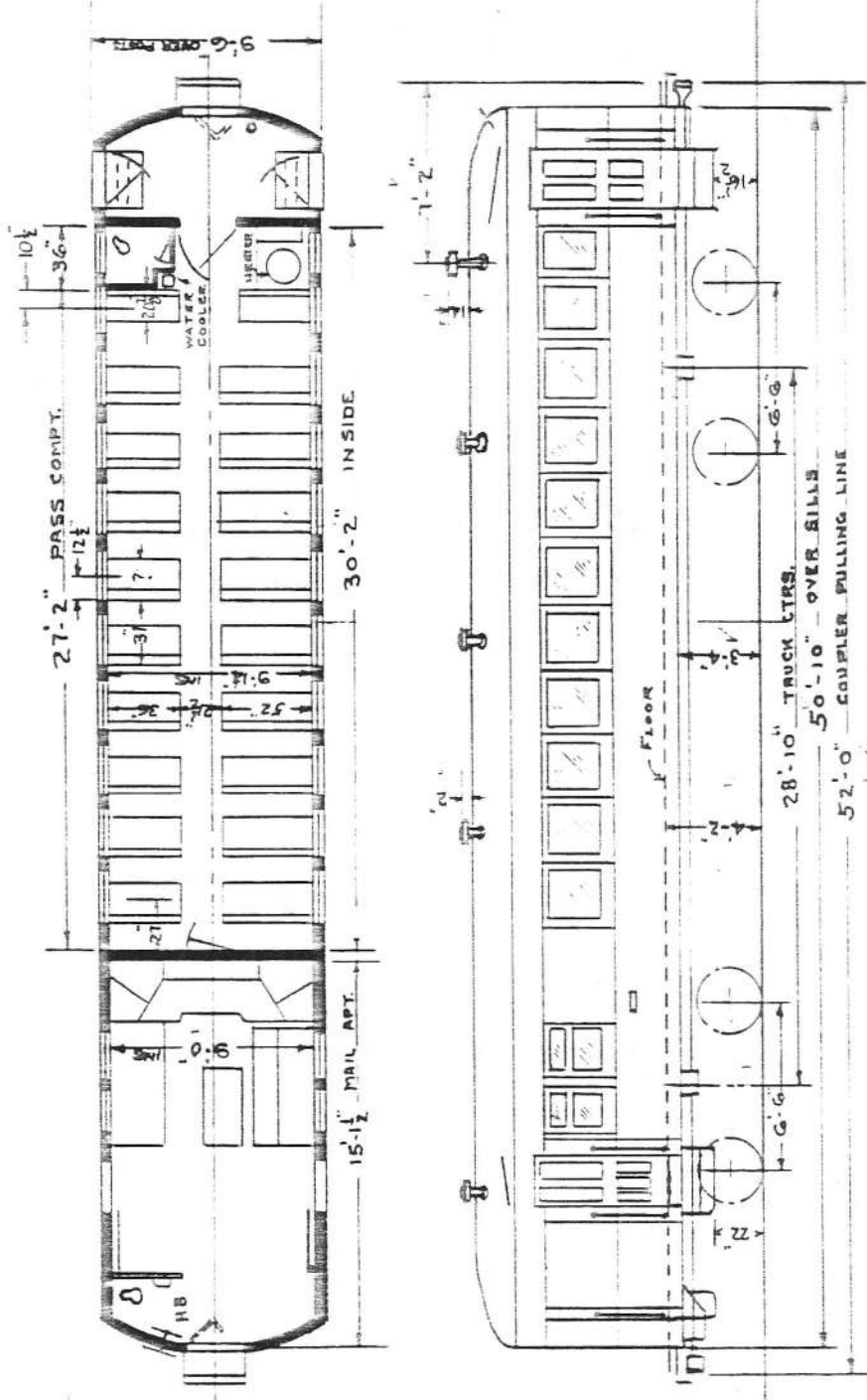


APPROVED _____
 SUPERSEDED BY 21679-D

DIAGRAM

RAIL MOTOR CARS LINE DATE

TRAILER
 # 1081 | 7-24-35



TRUCKS - BRILL 27 MCB 2
 WHEELS - 33 DIA. WROT. STEEL
 JOURNALS - 4 1/2 x 8
 BRAKE BEAMS - BRILL

UNDERFRAME - STEEL
 BODY BOLSTER - STEEL
 PLATFORM - STEEL
 BODY - STEEL

AIR BRAKE - W.A.B.CO.
 STYLE - L M
 CYL. SIZE - 10 x 12
 HAND BRAKES - DAYTON DROP HANDLE # 25
 MAIL END - VERT. WHEEL

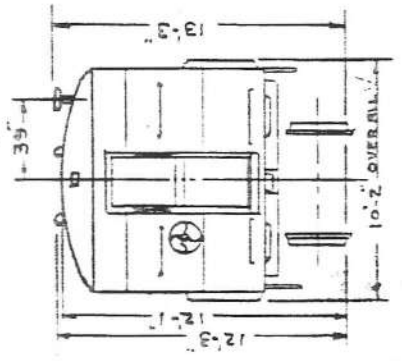
DRAFT GEAR SPRING
 BUFFING GEAR SPRING
 COUPLER - N.M.&S.C.CO. # 19705-5 FRAE

VENTILATORS - GLOBE
 HEATER - PETER SMITH. OC 2 A
 BATTERIES - EXIDE MVAH-13 (225AH)
 LIGHTING - E.M.T.

WATER COOLER - PASS. GIESSEL
 " " MAIL. GIESSEL
 HOPPER - PASS. DRY
 " MAIL. DUNER

TRAP DOORS - O.M. EDWARDS. 3Y

SEATING CAP.	49
WEIGHT BODY.	36500 LBS
" TRUCKS.	14200
" TOTAL.	50700



EWP

BOSTON AND MAINE RAILROAD

MECHANICAL DEPARTMENT
 BOSTON BOSTON & MAINE RAILROAD
 HISTORICAL SOCIETY

SHEET T-6

APPROVED

MECH. ENGR.

C. K. O.

SUPERSEDING
 21677-C

DIAGRAM ARCHIVES

RAIL MOTOR CARS LINE DATE

TRAILER #1090 1 8-12-35

TRUCKS - BRILL 27 MCB2
 WHEELS - 33" DIA. WROT STEEL
 JOURNALS - 4 1/2 x 8"
 BRAKE BEAMS - BRILL

UNDERFRAME - STEEL
 BODY BOLSTER - STEEL
 PLATFORM - STEEL
 BODY - STEEL

AIR BRAKE - W. A. B. Co.
 STYLE - AT M
 CYL. SIZE - 10 x 12"
 HAND BRAKES - DAYTON DROP HANDLE # 35

DRAFT GEAR - SPRING.
 BUFFING GEAR - SPRING.
 COUPLER - N. M. & S. Co. # 19705 - 5 Pcs

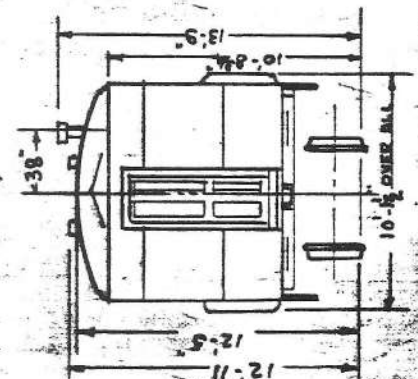
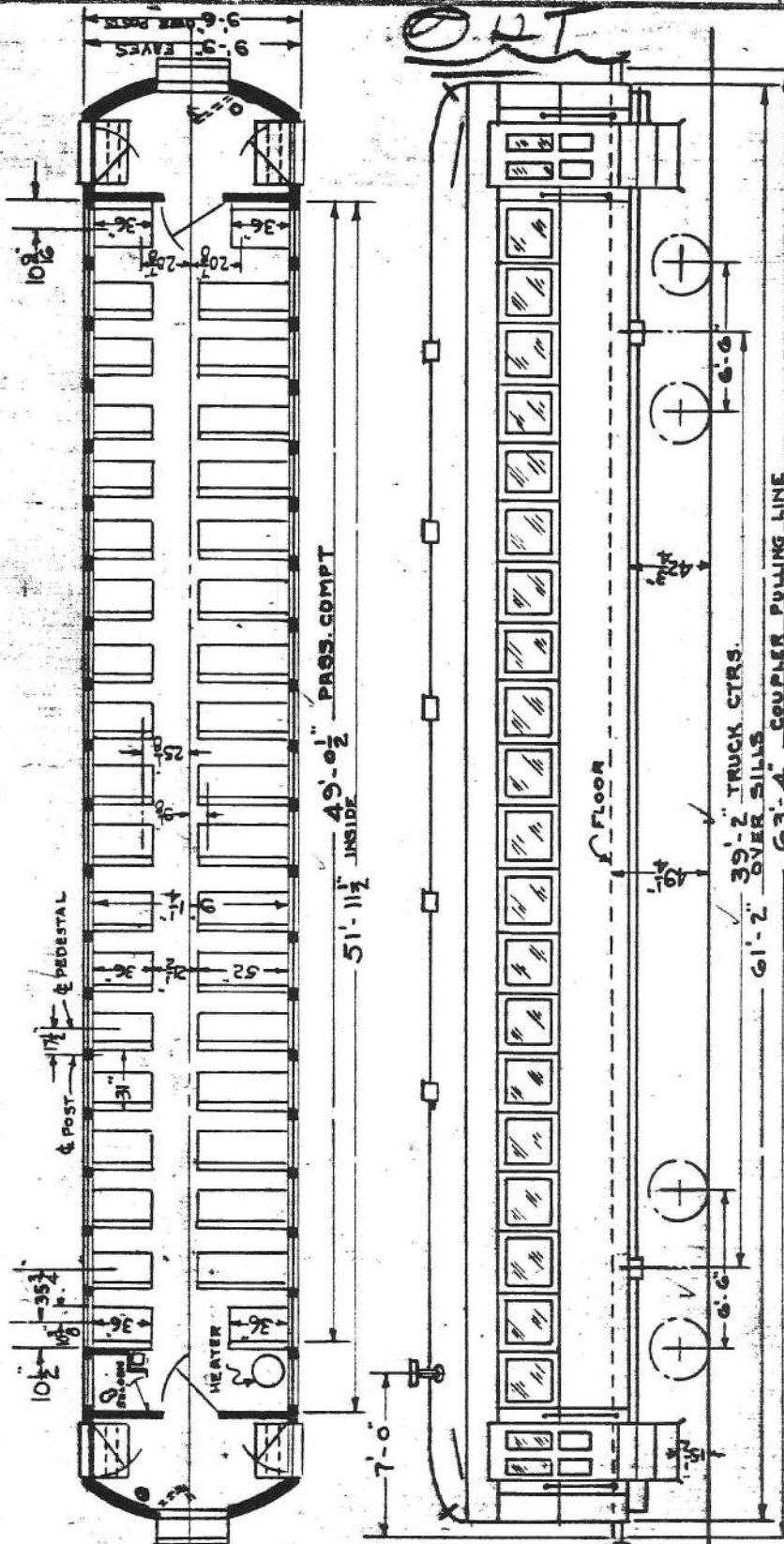
VENTILATORS - GLOBE
 HEATER - PETER SMITH OC2A

LIGHTING - EMT
 WATER COOLER - GIESSEL-BRILL

HOPPER - DRY.

TRAP DOORS - O. M. EDWARDS 3V

SEATING CAP.	93
WEIGHT BODY.	38700 LBS.
" TRUCKS.	14100 "
" TOTAL	52800 "



DIAGRAM

SHEET T-6

DR. EMP.
 TR. CH.

TRAILER #1090