

Boston & Maine Railroad Historical Society
19 *Incorporated* 71

NEWSLETTER

BUDDY WINIARZ, Editor • P.O. Box 2936 • Woburn, MA 01888 • Email: CPC835@JUNO.com

This Newsletter printed by Gnomon Copy of Lowell

Meeting/Membership Telephone Number (978) 454-3600

July-August 1998

Opinions expressed in the signed columns or letters of this *Newsletter* are those of their respective authors and do not necessarily represent the opinions of the Society, its officers or members with respect to any particular subject discussed in those columns. The mention of commercial products or services in this *Newsletter* is for the convenience of the membership only, and in no way constitutes an endorsement of said products or services by the Society or any of its officers or directors, nor will the Society be responsible for the performance of said commercial suppliers. We reserve the right to edit all material, either due to length or content, submitted for publication.

— B&MRRHS CALENDAR —

- JULY 24, 25, 26, 1998** Lowell Folk Festival....come on down to Lowell and help man the combine...**NO REGULAR MEMBER MEETING IN JULY.**
- AUGUST 8, 1998** 21st annual B&MRRHS Day at the Conway Scenic. **NO REGULAR MEMBER MEETING IN AUGUST.**
- SEPTEMBER 12, 1998** We'll be back at the Boott Mills for a program on "Fantrips Around New England" by Dan Hyde. **PLEASE NOTE THE EARLIER STARTING TIME OF 3:30**
- OCTOBER 17, 1998** This will be our annual meeting, with a presentation featuring Operation Lifesaver. **PLEASE NOTE THE EARLIER STARTING TIME OF 3:30**
- NOVEMBER 14, 1998** At 7:00PM, Wayne Gagnon will present a slide show on the Boston & Maine. **PLEASE NOTE THE STARTING TIME OF 7:00PM**
- DECEMBER 12, 1998** This will be in the Boott Mills at 3:30 PM and is our Annual Members "Nite". Bring at least 30 slides or a 15 minute video.

Nominations...

It's that time of year again for nominations of Officers and Board of Directors. Anyone interested in running for office or who wants to nominate someone must do so by August 1, 1998 either in person or by submitting your name by mail to the Woburn address in care of "Nominations." The ballot will be in the Sept./Oct. issue of the Newsletter and PLEASE follow the instructions on the ballot.

There are 3 positions on the BoD, Clerk, Secretary and Alternate spots on the BoD and Vice-President.

Folk Festival...

The Lowell Folk Festival is coming up and volunteers are needed to help man the Combine on Saturday and Sunday. If you can help out please drop a line to the PO Box in Woburn or come on down on Saturday or Sunday by 9:00 AM. There is a place to leave your vehicle, in the lot about 100 yards from the #410 and combine on Dutton St. Nice casual attire is required unless you have a conductors, engineers or other railroad outfit. Remember you can use e-mail to volunteer.

The Interchange

FOR SALE Custom 4 color, HO B&M steam locomotive "speed lettering" decals for \$10.95 a set plus \$2.00 postage. Send to: Robert Wilner PO Box 364 Mohegan Lake, N.Y. 10547.

LOOKING Bob Warren is looking for "top down" photos of the 011-016 series sand cars. Contact Bob at 1201 Kapok Cir. Clearwater, Fl. 33579-3210.

LOOKING Frank Fabian is looking for stories, photos and other information pertinent to women working on the railroad in all capacities. The period of WW II is of special interest but all leads to employees and their relatives are appreciated. Contact Frank at 8828 S. 5th Court Oak Lawn, Ill. 60453-1249.

LOOKING Member Bob Vibbert is looking for photos of B&M passenger operations in the Portsmouth, N.H. area from the late 1950's to the end of service in the 1960's. Also maps or information on Portsmouth yard and facilities.
Bob can be reached at 844 Bryant St. Rathway, N.J. 07065
Once a long-time resident of Portsmouth, he has photos of older steam.

FOR SALE A limited edition of 1,750 copies of a 17 X 25 _ lithograph by Joyce Johnson of Worcester's "Union Station-1918 for \$125.00. If interested contact Ms. Johnson at PO Box 687 12 W. Main St. W. Brookfield, Ma. 01585 or call her at 508-867-3979.

FALLEN FLAGS

The railroad community is saddened by the passing of Dorothy "Dot" Collinge, Membership Secretary of the National RRE for the past five years and an active member of the Lakes Region Div. Of the RRE, the Wolfboro RR Club.

Dot passed away on April 2 after a long illness. She and her husband Dave were married for 42 years and she was a supporter and participant of many railroad activities for many of them.

Dave and Dorothy were a staple at many railroad shows and was well liked by many. The B&MRRHS extend its sympathies and prayers to the family.

(Taken from MBRRE Callboy)

BULLETIN ANNOUNCEMENT

Bulletin Editor Andy Wilson is pleased to announce that Mr. George Drury, formerly of TRAINS magazine, has agreed to join the Bulletin staff as a Contributing Editor.

George grew up in the Reading, Ma. area and wrote frequently and eloquently of his relationship with the Boston & Maine.

NAME CHOSEN FOR BEDFORD TRAIL

BEDFORD, MASS. Members of the Bedford Bicycle Advisory consider and choose a name in the "Name the Rail-Trail Contest." Nineteen names were submitted for the three-mile stretch in Bedford between Loomis St. and the Billerica town line.

"BEDFORD NARROW GAUGE RAIL-TRAIL" was selected because it recognizes the reason why the trail exists said BAC chairman Ray Ruetenik.

The name was submitted by two people, Bill Marsh of Lexington and Erin Quirk of Woodland Hills, Calif. The name will appear on all rail-trail signage and on maps.

The trail will connect with the Lexington Minuteman Bikeway to the south and the proposed Yankee Doodle Bikeway to the north in Billerica.

SOCIETY ARCHIVES NEWS

LOWELL, MASS.—The Archives recently received the generous gift of a large collection of material from Sam Vaughan of Prides Crossing, Ma. B&M aficionados will be interested in a unique assemblage of commutation tickets, snow train posters, and correspondence dealing with troop trains, snow trains, camp extras, and other special moves. New haven fans will delight in an unparalleled collection of clippings, maps, menus, advertising material and internal railroad correspondence dating from before WW II to the 1960's.

We have also received the balance of the Clyde R. Smith collection through the courtesy of his daughter, Claire DuBois of Dover, N.H. The collection covers all facets of B&M operations.

The Archives Committee has resumed monthly meetings. We are ever-ready to accept donations of documents, photos, slides, and other items illustrative to the B&M and its predecessor and successor railroads. Society members are encouraged to visit and make use of the Archives. Regular hours are 9-5 M-F and 10-3 on Sat. To confirm hours please call 978-934-4997.

Volunteers are needed to help catalog and file the above collections and other material that we have.

Rick Nowell—Archives Chairman

STB RULES.....

In favor of Amtrak on use of Guilford track for passenger service from Boston to Portland, Me.

STB Chairperson Linda Morgan announced the terms and conditions for use of certain rail facilities owned by GRS. The decision clears the way for Amtrak to determine the use of \$40 million in public funds that have been set aside for rehabilitating the line between Plaistow, N.H. and Portland, Me.

The Board granted Amtrak the option, prior to instituting service, to either buy insurance or agree to indemnify GRS from any liability that GRS could incur as a result of Amtrak operations. The STB also rejected GRS that Amtrak be required to buy insurance to protect GRS from liability incurred as a result of GRS own negligence or misconduct.

Another issue was how much Amtrak should pay GRS for maintaining its track. Noting that the new track, with all of the improvements contemplated, would require no more maintenance than the line currently requires even with the additional

Amtrak traffic. The Board found that the payments prescribed in an earlier proceeding involving Amtraks use of Conrail tracks should be prescribed here, and that, after the parties gain some experience with the new operations, they can return to the Board if adjustments are needed.

The STB also addressed questions involving the costs of rehabilitating various facilities. The Board included \$2 million in its costs for bridges, rejecting GRS's claim that over \$20 million was needed. They also found that a 2-mile by-pass would be adequate to ensure that Amtrak trains will not unduly disrupt freight operations at GRS's Rigby Yard. Thus rejecting Guilford's claim that a longer by-pass would be needed.

According to WMUR-TV 9 of Manchester, N.H. rail service is hopefully set to start in Fall of 1999. With stops in Exeter and on weekends at UNH in Durham.

(From the Internet—SC and WMUR TV)

CAPE RAILROAD SUIT..

BOSTON, MA. Six months after suspending the operating license of the Cape Cod RR, the state has filed an environmental lawsuit accusing the company of dumping waste from its trains. The suit states that the CCRB broke state and federal environmental laws by dumping raw sewage and kitchen waste along its route, which runs through protected salt marshes and past private wells.

The suit also claims workers dumped waste oil on the company's Hyannis rail yard and removed asbestos from rail cars and a locomotive without proper precautions.

According to a Cape Cod Times report, food particles, grease and detergent were poured from the kitchens on the railroads dinner train, and former employees said they had witnessed such dumping or pulled the valves themselves—including on ecology tours.

Assistant Attorney General Andrew Latimer said the state would seek civil penalties and if needed, money to clean up the contamination from the rail yard.

(Salem News)

VOLUNTEERS NEEDED!!!!

The Lowell National Park Service is currently seeking volunteers to assist with trolley operations. The turn-of-the-century trolleys provide transportation between the Visitor Center and other exhibits. Trolley motorman and conductor volunteers will operate the trolley through historic downtown Lowell, flag the trolley safely through intersections, assist passengers with boarding and disembarking the trolley, and provide information to visitors. Training is provided.

To volunteer or for more information, call 1-978-970-5032.

CONRAIL DERAILMENT

PALMER, MASS.—According to official investigation, a derailment of three locomotives and several cars was caused when blocks of granite from a retaining wall fell from a bridge construction job and landed on the tracks.

TV13 struck a retaining wall that collapsed causing the locomotives to jump the rail. One of the tanks ruptured and a fire ensued with a container car burning.

Several hundred feet of the mainline, controlled siding and the yard lead were destroyed. There were no injuries ion the derailment.

(The Internet)

WATERTOWN BRANCH ABANDONMENT

The Boston & Maine and Springfield Terminal have filled an application with the Surface Transportation Board (STB) for the B&M to abandon and ST to discontinue service on the Watertown Branch between milepost 5.85 and 7.68 in Middlesex County, Mass. No freight traffic has moved over the line during the past two years.

(The Internet)

MEMBERSHIP RENEWALS

Please note that when sending in your renewals for membership that the address is on the form and it is:

B&MRRHS MEMBERSHIP
P O BOX 9116
LOWELL, MASS. 01852

SIDINGS

Member Richard Durnin sent this along. Another city/town on the B&M that had multiple stations was Haverhill, Mass. with a total of seven. Haverhill, Bradford, Ward Hill and Rosemont on the mainline and Haverhill Bridge, Paper Mill, and Island Park on the Georgetown Branch. To the best of my knowledge only Rosemont stands today and it is an antique shop.

On May 7th, 1998 a time capsule was opened at the Middlesex Savings Bank in Ayer, Mass. Right on top was a schedule for the Fitchburg Railroad. Also included was a Boston & Maine RR schedule for the "Southern Division," good from October 4, 1897 to April 1, 1898. Both are to be preserved by the Ayer historical society.

(New England Cable News)

MT. WASHINGTON-- A gust of wind blew off a section of the roof from a car on the Cog Railway headed for the summit on June 1, 1998. None of the crew and passengers were injured in the incident and the train stopped and return to the Base Station. According to GM Charles Kenison, the Cog is designed to run in 90 mile-per gusts. Two passengers jumped from the train and had to be coaxed back into the car for the trip down. There was no danger according to Kenison except for the two people who left the train against the crews orders. "The wind got in the windows and lifted the corner of the roof up." The incident happened at 5800 feet elevation.

(Trains Newswire Service)

If you go towards the Fall River area this summer or at any time and you enjoy bagels, stop in the Fruit & Bagel at 938 Lees River Ave. in Somerset. It is located in an old passenger coach.

(Boston Globe Travel Section)

In West Virginia, two men decided to play a game of "chicken" with a train. They stood on the tracks as long as possible. Dave Flannery, Jr. 22 won. The train hit the brave but stupid Flannery, sending him flying 70 feet in the air, he survived the ordeal.

(Boston Herald)

Thomas Pearson sends news along that work on the B&M's "Salisbury Beach" is coming along. The overhaul of one truck is complete and new electric baseboards are in place as well as most of the conduit for head-end power. It has been cleared for a private car trip to the Grand Canyon in late October.

Three bridges, built in the 1880's, that span railroad tracks in Berwick and Falmouth, Maine are yours for the taking. They are eligible for the National Register of Historic places because they are among the few engineering techniques of the time remaining.

(Telegram & Gazette)

Selectmen in Marblehead, Ma. requested that a steam locomotive sitting on a section of rail be moved. The locomotive, a 12-ton narrow-gauge engine built in Germany belongs to the Mead family. As a hobby, Thorn Mead restores them. But within a matter of days of the notice by selectmen to move the locomotive it was gone. "The little engine that couldn't stay is likely to be the last train out of town--ever.

(Salem Evening News)

Work on a new train stop and parking lot in Hamilton, Ma. has been delayed at least several months due to a review by the Mass. Historical Commission. The new platform and parking lot will be in Wenham and is being built so as not to tie up traffic on RT. 1A.

(Salem News)

Does anyone have any idea what a CP caboose and several coaches were doing in Manchester, N.H. in late May early June??

CP M636 #4711, the last of the six-master Alco in service was retired on May 27th. For the past few years she has been a fixture in the transfer service of CP's Montreal terminals, usually operating in the company of endangered C-424's and RS18's.

(Trains Newswire)

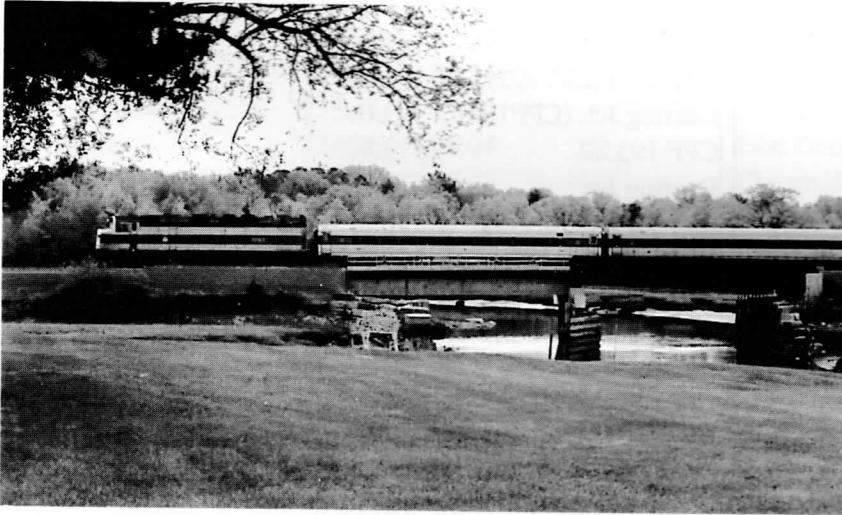
Thanks...

Thanks this issue go to Jim Shea (FBDP), The Unofficial Guilford Page, Doug Barron, Andy Wilson, Scott Currier, Bob Warren, F. Rick Nowell, Jonathan Miner, Dave West, Glen Owens, John Roy, Jr., Thomas Pearson, Scott Whitney, Paul Kosciolk, Jim Nigzus, Richard Durnin, William O'Connor III, MassBay Callboy

Deadline for next issue...

The deadline for the next Newsletter is August 8, 1998. Please send all items to the "Newsletter" PO Box 2936 Woburn, Ma. 01888 or e-mail it to CPC835@JUNO.com .

NEWBURYPORT EXTENSION...



(Above) F40PH-C #1063 in Ipswich on May 17, 1998, heading to Newburyport by the Rt. 1A overhead bridge.

(Left) F40PH-C #1063 with consist at the Rowley River bridge on May 17, 1998.
(Both photos by Dave West)

NEWBURYPORT, MA.-- Work continues on the "Newburyport extension" from Ipswich to Newburyport. The project involves the reconstruction of 8.5 miles of track, the replacement of four undergrade and one overhead bridge, reconstruction of 12 grade crossings, the construction of two platforms, parking lots, four new interlockings and the installation of a TCS signal system.

The track will be 132 pound welded rail on wooden ties. Switch timbers are of azobe, a tropical wood that does not need chemical preservatives. The bridges replaced are two Muddy Run bridges, Rowley River and Parker River bridge.

Station stops are at Rowley, on the site of the former depot, and in Newburyport where the Eastern Route Main Line, the Newburyport Branch, the Newburyport City RR and the Pond St. Freight Track all came together.

The interlockings are "Bagley", named for Thomas Bagley, who was the engineer who was killed in Everett, Ma. when his Budd car struck a gasoline truck. Mr. Bagley's father also died in the line of duty on the CPR in Onawa, Me. And son, Tom is still an engineer for Amtrak on the New Hampshire Main Line.

"Steeves," which governs movement over five grade cross-

ings in Ipswich is named for long-time B&M/Amtrak Engineering Dept. employee.

"Knight" which is at Hay St. crossing at the beginning of the passing track and "Port" just west of the Rt. 1 controlling access to the layover. The layover is being built on the site of the "new" connecting track, built circa 1936 to connect the East Route with the Newburyport City RR.

The first train to run over the line was on April 30, 1998. It was a work train delivering rail and OTM to Newburyport for construction of the layover tracks. The "T's" GP-9 #904 pulled five side-dump cars and an ex-CP caboose. On May 17th, a set of passenger equipment consisting of F40PH-C #1063 and five coaches were used in a mock disaster drill in Ipswich. After the drill the train went over the Rowley River bridge for a photo session for the MBTA's Publicity Dept.

Crew qualifying runs will be in August and September pointing to an October opening.

From June until September tests will be conducted daily, 7 am to 7 pm, on the new segment. The tests are to assure the reliability of the new train equipment and warning devices at crossings.

FREIGHT MAIN MILEPOST LISTING ON GRS

KEAG (CP Rail)	.41	Mattaeamkeag, Me.	Cressey (Monmouth)	149.72	E. end of pass. track
Winn	2.81		Wood	149.85	E. leg of Leeds Jct.wye
Chamberlains	8.09		Leeds Jct.	150.20	Rumford Br.
Middletown	11.97		Roy	151.10	W. end of pass. track
Lincoln	13.62		Greene	152.00	
Pollard Brook	17.88		Den	159.20	E. end of pass. track
Enfield	22.99		Fairgrounds	160.09	W. end of pass. Track
Passadumkeag	26.00		Lewiston	165.63	
Clamon	31.74		Auburn (CPF167)	167.27	(SLR)
Costigan	40.04		New Gloucester	172.16	
Old Town	45.75		Walnut	183.25	
Great Works	46.92		Yarmouth (CPF185)	184.70	
Fay	47.07		Cumberland Ctr.	186.93	
Webster	49.73		West Falmouth	187.00	
Basin Mills	50.00		Falmouth (CPF192)	191.80	
Veazie	54.17		Deering Jct. (CPF194)	193.66	
Fosters (CPF58)	57.56	Calais Jct.	CPF 193.80	193.80	
Bangor	58.42		Deering Jct.	193.90	
Tin Bridge (CPF59)	59.25		Park Ave. (CPF195)	196.29	
Dow	61.71		Mountain Jct. (CPF196)	196.72	
Hammond St.	62.20		Fore River Brg.(CPF197)	196.98	
CPF63	62.89		Oil Plant (CPF198)	197.10	
Northern Me. Jct.	63.71	BAR RR	PT Tower	197.58	Rigby Tower
Hermon Ctr. (CPF66)	65.67		CPF199	198.49	End District 1
Carmel (CPF70)	70.42		Rigby	199.00	Start District 2
Dabsbrook (CPF72)	72.38		CPF200	199.97	
Stetson (CPF78)	78.20		Scarboro Beach	202.35	
CPF80	80.20		Pine Point	204.90	
East Newport	82.81		CPF206	206.00	
Newport Jct.	85.51	Foxcroft Br.	Ocean Park	206.32	
Detroit	88.29		Old Orchard Beach	207.34	
CPF90	90.37		CPF209	208.71	Crossover
Pittsfield	92.52		CPF211	210.55	
CPF92	92.87		Biddeford	211.90	
Farnham Brook (CPF93)	93.32		Alfred Road (AR)	213.15	
Burnham (CPF98)	98.47		Kennebunk	221.04	
CPF99	99.35		Wells Beach	226.15	
Burnham Jct.	99.59	B&ML RR	CPF229	229.00	
Clinton	101.00		North Berwick East	229.11	
Fairfield	106.00		CPF232	231.54	
Canaan (CPF107)	107.42		North Berwick	232.00	
Parkers (CPF109)	109.85		CPF233	233.03	
Fairfield (CPF110)	110.68		Cummings	239.49	Maine
Keys (CPF111)	11.57		Salmon Falls	239.93	New Hampshire
CPF112	112.81		Rollinsford (CPF241)	241.41	
Waterville (CPF113)	113.07	Tower "A"	Dover	243.00	
North St. (CPF114)	113.30		CPF243	243.63	
Oakland (CPF119)	118.77	Madison Br.	CPF244	243.92	
Belgrade	127.76		Arch (CPF245)	244.53	
Readfield	135.66		Madbury	247.21	
Winthrop	141.33		Durham	249.12	

FREIGHT MAIN MILEPOST LISTING ON GRS

Newmarket	253.82		Parkers (CPF346)	346.41	
Rockingham Jct.	255.55		Otter River	348.58	
CPF256	255.82		Baldwinville	350.53	
Newfields	256.60		Wrights (CP{F354)	353.56	
CPF258	257.84		CPF361.99	361.99	
Exeter	260.60		Tyter (CPF363)	362.66	
East Kingston	265.48		Orange	366.20	
Newton Jct.	270.25		Wendell	369.02	
Plaistow	272.62		CPF370	370.24	Start Dis. 4
Westville (CPF273)	272.89		Erving	371.30	
Atkinson	274.55	New Hampshire	Farley	373.62	
Rosemont	275.60	Mass. Western Rt. 35.49	CO377.11	377.11	NEC RR
Hall	277.62	33.38	Lake Pleasant	379.60	
Haverhill	278.07	32.93	Montague	380.72	
Ward Hill	280.46	30.54	CPF381	380.97	
North Andover	283.66	27.34	E. Deerfield (E)CPF383	382.65	
Lawrence	284.96	26.04	East Deerfield	382.70	
Andover St. (CPF-AS)	285.37	25.63	Cheapside (CPF384)	383.65	
Shawsheen	287.09	23.91	Greenfield E. (CPF385)	385.22	Conn. River Main
CPF-FY (Frye Interlock)	287.30	23.70	Greenfield	385.36	
Andover	288.22	22.78	CPF389	388.82	
Ballardvale	290.52	20.48	Bardwell	393.68	
CPF-LJ (Lowell Jct.)	291.15	Western Rt. 19.85	Shelburne Falls E.CPF398	398.26	
Tewksbury	294.82		Shelburne Falls	398.39	
CPF297	296.50		Buckland	401.40	
CPF-BY (Bleachery Yard)	298.50	N. Hampshire Rt. 17.50	Rices (CPF406)	406.40	
CPF-LO (Lowell "T" Sta)	299.74	25.47	Charlemont	407.36	
CPF-WA (Western Ave.)	299.95	25.95	Zoar	410.88	
CPF-NC (Northern Main)	302.34	Start Dist. 3 29.34	Soapstone (CPF414)	413.70	
CPF-303	303.00		East Portal (CPF415)	415.40	
CPF307	307.35		Central Shaft	418.15	
CPF309	309.09		West Portal (CPF421)	421.08	
Forge Village	310.19		North Adams	422.39	
CPF312	311.97		CPF423	422.58	
Willows (CPF-WL)	313.77	Fitchburg Rt. 33.72	Williamstown	427.58	
CPF-AY (MBTA Sta.-Ayer)	315.75	(Flannigans) 35.75	CPF428	427.71	
Ayer	316.07	36.07	Pownal	431.43	Vermont
Shirley	319.43	39.43	North Pownal (CPF434)	433.72	
CPF-SC (Slab City)	320.17	40.17	Hoosick	440.19	New York
North Leominster	325.34	45.34	Hoosick Falls	443.20	
OX (E. end Fitch Yd.)	326.75	46.75	Hoosick Jct. (CPF445)	445.18	
CPF-FG (W. end F. Yd.)	328.10	48.10	CPF448	447.51	Battenkill RR
Fitchburg (MBTA Sta.)	329.55	49.55	Johnsonville	453.89	
Bike Shop	329.70		West Valley Falls	456.63	
W. Fitchburg (CP331.82)	331.82		Schaghticoke (Scoke)	458.03	
Wachusett	333.16		CPF461	461.01	
Westminster	335.00		Reynolds	462.61	
South Ashburnham	339.90		Brick Yard (CPF464.77)	464.77	
East Gardner	341.78		CPF466	466.25	
CPF345	344.64		XO Tower (COF467.30)	467.30	
Gardner	344.66	P&W RR	Mechanicville	467.89	

CONN RIVER LINE

WORCESTER MAIN

Springfield	0.00	CP98 Conrail	Worcester	-----	P&WRR/ST
CPR1 (WA Interlock)	0.38		Trackage Rights		
Round Hill	1.06		Barber	2.92	End P&W/Begin ST
Yard 3	1.28		New Bond St.	3.18	
Moores	2.04		Shay	3.30	
Chicopee (CPR3.43)	3.43		Greendale	4.25	
Pattern (CPR5.26)	5.26		Burncoat St.	4.60	
Westover Railhead	6.85		Shrewsbury St.	6.00	
Willamansett	6.93		Temple	7.80	
Riverside	7.28		West Boylston	8.76	
Holyoke	7.92	Pioneer Valley RR	Prescott	11.20	
Holyoke (N) (CPR9)	9.45		Gates	12.30	Sterling
Smiths Ferry	12.80		Newhall Hill Rd.	12.90	
Mount Tom	14.72		Sheehan's St.	15.40	
Northampton (S) (CPR16)	16.01		Sterling St.	16.80	
Northampton (CPR18)	17.93		Clinton	17.10	
Hatfield	20.82		Mill St.	18.10	Lancaster
North Hatfield	23.82		Center Bridge	19.10	
Whatley	26.16		Neck Rd. (S)	19.20	
South Deerfield	28.39		Packard Rd.	19.60	
CPR33	32.70		Neck Rd. (N)	20.00	
Deerfield Jct. (CPR35)	34.60	Deerfield Loop	Rt. 117	20.20	
Greenf'ld East (CPR385)	35.89	Freight Main	Pine Hill Rd.	20.75	
Greenfield	36.07		Still River	23.19	Harvard
CPR36	36.31		Still River Rd.	23.20	
Silver St. (CPR38)	37.72		Harvard	25.70	
Bernadston	42.64		Ayer	28.01	
Mount Hermon	46.16				
MT. Hermon Gravel Pit	47.35				
East Northfield (CPR50)	49.67	End ST			
Trackage**					

**ST trackage rights over NE Central between Northfield, Ma. and White River Jct., Vt.

ST RADIO FREQUENCIES

District 2-4 (B&M) dispatch	161.1160	ST Police/ST Rigby Yard	161.250
Road	161.520	ST Police	161.260
Yard	161.400	East Deerfield Hump	161.350
Maintenance of Way	161.370	MofW Portland area (ex PT ch.)	160.380
District 1 (MEC) dispatch	161.620	MBTA/Amtrak Boston Dispatch	160.320
District 1 (MEC) Yard	161.250	MBTA	161.310
ST Police	161.230		

TRAIN SYMBOLS

THROUGH FREIGHTS

DHPO/PODH Mohawk Yd., N.Y. to Portland, Me. (Rigby)
 EDPL/PLED E. Deerfield to Plainville, Ct.
 EDLA/LAED E. Deerfield to Lawrence, Ma.
 EDWJ/WJED E. Deerfield to White River Jct., Vt.
 SELA/LASE Selkirk Yd., N.Y. to Lawrence
 SENE/NESE Selkirk to Rigby
 LANA/NALA Lawrence to Nashua, N.H.
 LASA/SALA Lawrence to Salem, Ma.
 BODO/DOBO Boston to Dover, N.H. (rock/sand train)
 PORU/RUPO Portland to Rumford, Me.
 POBK/BKPO Portland to Bangor, Me. (see Local BK-1)
 POSD/SDPO Portland to SD Warren Paper (Westbrook, Me.)
 BAMA/MABA Portland to Mattawamkeag, Me.

COAL TRAINS

Bow, N.H. Rotterdam Jct. To Bow, N.H.
 Mt. Tom Rotterdam Jct. To Hadley, Ma.

AUTO TRAINS

ML-438 Selkirk to Ayer, Ma.
 ML-439 Ayer to Selkirk

LOCALS

ED-3 E. Deerfield to North Adams
 HO-x Holyoke Locals
 FI-x Fitchburg Locals
 AY-x Ayer Locals
 BO-x Boston Locals
 LA-x Lawrence Locals
 LO-x Lowell Locals
 DO-x Dover Locals
 NA-x Nashua Locals
 POR-x Portland Locals
 BA-x Bangor Locals
 WA-x Waterville Locals
 BK-1 Bangor to Bucksport
 (w/POBK's consist)
 BK-2 Bucksport to Bangor
 (forwarded to BKPO)
 OT-x Old Town, Me. Locals

(Taken from the "Unofficial Guilford Homepage" off the internet.)

Units equipped with:

B&MRRHS Newsletter

Telemetry (red dot)

301-308-319-326 thru 330-332 thru 335-337-339-340-342-349-376-377-380-404-406-407-621.

Containment tanks

10-22-71-77-200 thru 216-252-301 thru 306-308-309-310-312-313-315-316-318 thru 321-326 thru 330-332 thru 335-337-339-340-342-343-344-347-349-351-352-370-372-373-374-377-380-470-615-620-621-643-681-684-692.

Ditch lights

10-200 thru 205-209-211 thru 214-252 301-302-304-305-306-308-309-310-313-315-316-318 thru 321-326 thru 330-332 thru 335-337-339-340-343-344-346 thru 351-353-354-355-370=371-376-377-380-402-404-406-470-619-643-681-684-692.

Pulse Speedo's

10-12-51-52-54-62-71-72-77-200 thru 216-252-288-300 thru 306-308 thru 321-326 thru 330-332 thru 335-337-339-340-342- thru 347-349 thru 355-370-371-373 thru 377-380-402-404-406-407-470-615-619-620-621-643-681-684-690-692.

Event recorders (white dot)

72-200 thru 216-252-301 thru 306-308-309-310-312-313-315-316-318 thru 321-326 thru 330-332-thru 335-337-339-340-343- thru 347-349 thru 354-370 thru 377-380-402-404-407-470-615-619-620-621-643-681-684-690.

(This list was sent in anonymously with a Boston postmark—thanks to whoever sent it.)

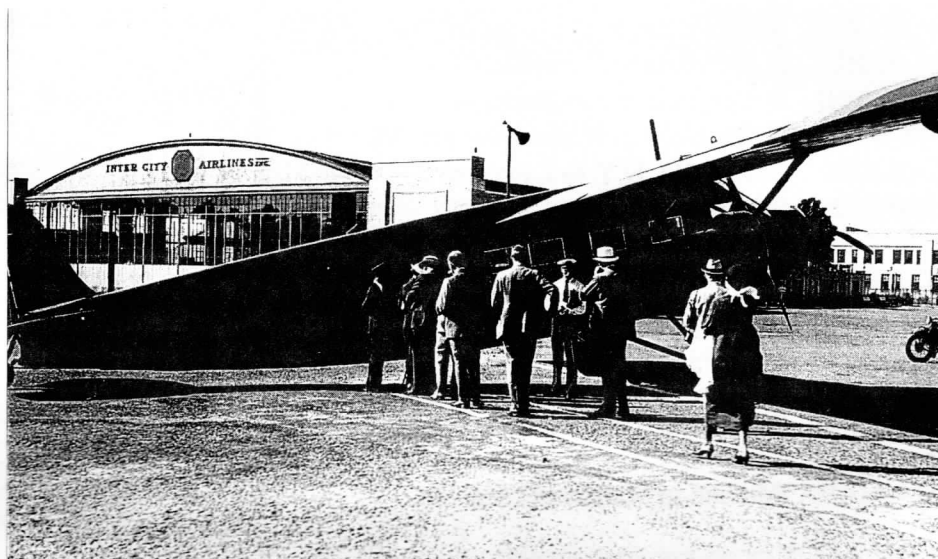
"COME FLY WITH ME..."

MIAMI, FL.---New England railroad, Guilford Transportation Industries, has bought the remaining assets of Pan American World Airways for \$28.5 million, which \$5 million will go to "new capital."

Under the sale comes two Boeing 727's and one 737, spare parts and route authorities and rights. Along with a 30% interest in a small commuter airline, U.S. regulatory certificates, trademarks and logos, and intellectual property relating to the Pan Am name. (Taken from several sources)

And...

Remember the Boston & Maine had an airline back in the 1930's. Famed aviatrix, Amelia Earhart was once it's president.



Above is a photo of one of those planes bound for Montreal from Boston on July 29, 1934. (Bob's Photos--Buddy Winiarz collection.)

B&M MEMORIES Volume 6: The Films of Frank Ellis

The B&MRRHS is pleased to announce the release of Volume 6 of our B&M Memories series of videotapes. This volume features a short selection of all-color films taken by Mr. Frank Ellis spanning the time period from 1952-55. Scenes include North Station, Boston Engine Terminal during the final days of steam power, and Madbury, N.H. with sand loading of hoppers for construction of I-93 in 1962. Also shown are views of Clinton Tunnel and viaduct on the Central Mass. and the tragic wreck at Swampscott in 1955, scenes at Eastern Gas & Fuel in Everett with 0-6-0 steam switchers in operation. As an added highlight, there is a black & white segment taken by Mr. Henry Gibson showing Hoosac Tunnel Electric locomotives in operation circa 1940. Terrific stuff!

*Approximate running time 15 minutes: Color & B&W:
VHS only: \$12.00 + \$3.50 P&H*

Please send check or money order to

**B&MRRHS Catalog
P.O. Box 2936
Woburn, MA 01888**

Please allow 4-6 weeks for delivery

STEAM IN VERMONT

NYSW #142 will operate on the Green Mtn./Vermont Rwy. during July and August.

- | | |
|---------------------------|--|
| July 25 | Press trip from Rutland to Bellows Falls at 10 am arrive at 1:30 |
| July 29-Aug.2 | 3 trips at Transpo 98. |
| August 6 | Goes to Montpelier for overnight tie-up. |
| August 7 | Special trip for Vt. State officials to Burlington. |
| August 8 & 9 | Burlington to Rutland trips. |
| August 15 & 16 | Steam on Champlain Valley Weekender, |
| August 22 & 23 | Burlington to Middlebury. |
| August 29* | Rutland to Bellows Falls trip. |
| August 30* | Rutland to Whitehall, N.Y., to Ludlow and return. |

* For information on trips call: 617-489-5277 (MassBay RRE)

"RYE BEACH" FINDS A HOME...

CHICAGO, IL. — A key attraction has been lacking for more than a decade at the Pullman Historic District on the city's South side—a Pullman railroad car. Recently, members of the Milwaukee based U.S. Army Reserve 757th Army Rail Battalion laid track for a car to sit upon next to the visitors center. That car is former Boston & Maine sleeper Rye Beach.

The Rye Beach ended up in Dwight years ago when the former fire chief bought it to refurbish but never did. The Illinois Historic Preservation Agency prevailed upon the man to donate it to the Pullman District.

According to Kent Haag, due to its condition, the air barakes may not be functional and it would probably costs the state more to repair them then what its worth. Thus the car will probably be trucked over rather then run on the rails.

At one time the "Rye Beach" had three different types of accommodations, fold-down berths, private rooms and first-class accommodations. It will take about a year to refurbish the car, said officials due to the fact that many parts were removed over the years as replacement parts for other cars.

The 757th is the last rail battalion and the men needed some hands-on training according to Capt. Christopher Toepfer. Some of the members just returned from Bosnia where they were repairing that countries railway system.

Also located in the District is the Florence Hotel, named after Pullman's eldest daughter. The hotel was used many times as a backdrop in the Untouchables.

(Chicago Tribune)

WNP STATION TO BE SALVAGED

HUDSON, N.H.—The old railroad station at the former Benson's Wild Animal Farm will remain on the parcel as part of a public park being planned.

Selectmen agreed to save the station and move it to the former location of the Tenney House at the corners of Kimball Hill Road and Central St.

The state is demolishing several buildings at the site and the land is being used for the construction of the circumferential highway. Town officials also want to save some of the buildings from Benson.

Originally the town wanted to move the depot to route 102 to the Alvirne High School grounds but the \$10,000 cost was prohibitive.

President to the Hudson Historical Society, David Alukinos, said moving the station to the old Tenney House site is best because other historical buildings located in the neighborhood. The outside of the depot can be restored to its original condition by following old photos but the interior has been gutted and needs work.

(Lowell Sun)

NOTICE OF ARCHIVES HOURS

The B&MRRHS archives are located in the Patrick Mogan Culture Center at 40 French St., Lowell, Ma. They are generally open Mon.—Fri. 9 to 5 and Sat. 10 to 3. Closed Sun. and holidays. For further information and to see if they are open call 508-934-4997 or 4998.

E-MAIL CONNECTION

This is the last notice to be given for members to submit their names, interests and e-mail addresses so you all can communicate with each other. We have about a dozen or so memebtrs who are interested. This was requested by members so we are giving it a shot.

IMPORTANT NOTICE REGARDING ZIP CODE CHANGES

To all members who live in the following cities or towns please notify the Society of ANY CHANGE in your ZIP CODE so that your mailings can be delivered to you by the Post Office.

ARLINGTON
BROCKTON
LEXINGTON
NEWTON
WELLSLEY

BELMONT
BROOKLINE
NEEDHAM
WALTHAM
WESTON

"There's No Business Like Show Business..."

If you or someone you know would like to do a slide or movie presentation for the B&MRRHS, please contact our Program Chairman, Jim Byington. He can be reached through the Society's telephone at (617) 628-4053, or by dropping a line to Jim at the B&MRRHS P.O. Box in Woburn.

OF SPECIAL INTEREST

The Valley RR in Essex, Ct. will let you run a real steam locomotive after the tourist season. Reservations are required, a safety test which includes lantern and steam whistle signals is given. Although you pass does not qualify you as an engineer. A "qualified engineer" is on board the locomotive for the 8 mile run. This is open to all persons 18 years and older. Dates are November 7,8,14,15 1998. Cost is \$300.00

Contact them at: The Valley RR Co. 1 Railroad Ave. PO Box 452 Essex, Ct. 06426 or phone 860-767-0103.

MEMBERSHIP MEETINGS

The Society regrets the results of the April meeting with Ron Karr as speaker. Due to a miscommunication on the Societys part we had no speaker. Chairman Jim Byington has said that Mr. Karr may be able to do the Annual Meeting in October. Again we apologize for the inconvenience.

The people who joined us for the April meeting were shown the Societies new Memories Tape Vol. 6 and The Mountain Division Tape.

In May Bob Poore came from "down East" to show us rail-roading on the Maine Central before Guilford. Seen were units in the various paint schemes, sites along the route and the long gone trains running down Commercial St. in Portland.

The Society is thinking of having membership meetings in the afternoon. Listed below is the schedule for trains from Boston to Lowell and back. Please hold for future use.

Saturday/Sunday					INBOUND				
	OUTBOUND								
N. Station	8:00	10:00	12:00	2:00	Lowell	3:00	5:00	7:00	9:00*
W. Medford	8:11	10:11	12:11	2:11	N. Billerica	3:07	5:07	7:07	9:07
Wedgemere	8:15	10:15	12:15	2:15	Wilmington	3:14	5:14	7:14	9:14
Winchester	8:17	10:17	12:17	2:17	Mishawum	3:20	5:20	7:20	9:20
Mishawum	8:23	10:23	12:23	2:23	Winchester	3:26	5:26	7:26	9:26
Wilmington	8:29	10:29	12:29	2:29	Wedgemere	3:28	5:28	7:28	9:28
N. Billerica	8:36	10:36	12:36	2:36	W. Medford	3:32	5:32	7:32	9:32
Lowell	8:43	10:43	12:43	2:43	N. Station	3:43	5:43	7:43	9:43

* This is the last train out of Lowell at night.

UPCOMING EVENTS OF INTEREST...

- July 11, 12 1998 Greenburg Train Show in Wilmington, Ma. at Shriners Auditorium exit 39 off RT. 93. 11-5 & 11-4.
- July 24-26, 1998 Lowell, Ma. Folk Festival B&M combine open to public with displays.
- July 29-Aug.2,1998 "Transpo-98" Bellows Falls, Vt. Display of Live Steam, Passenger Trains, Antique cars, trucks, RR art sale, antique gas engines and among others. Train show in the Bellows Falls High School 10-5 \$3 Adults \$1-12 and under and Srs. \$5 family pass.
- August 3, 1998 Conway Scenics 24th Birthday Celebration.
- August 8, 1998 Annual B&MRHS Day at Conway Scenic.
- Sept. 12, 1998 The 6th annual "Glory Days of Railroading Festival" and Model Railroad & Railroadiana Show. 9-5 \$3 Adults \$1 5-12 & Srs. Show in the Am. Legion Hall, 37 Main St. White River Jct., Vt.
- Sept. 12 & 13 Fall meet of the Pioneer Valley Steamers in Southwick. Ma. from 9-3. Hillside Rd. off SR 57, 12 miles west of Springfield.
- Sept. 19. 1998 North Shore Model RR Club train show in the American Civic Ctr. 9:30-4. Wakefield, Mass.
- Oct. 17 & 18 24th annual Railfan's Weekend at Conway Scenic RR.
- Oct. 18, 1998 Pepperell Siding Train Show at North Middlesex Reg. High School 10-4. Rt. 119 Townsend, Mass.