

Boston & Maine Railroad Historical Society  
19 *Incorporated* 71

# NEWSLETTER

BUDDY WINIARZ, Editor • P.O. Box 2936 • Woburn, MA 01888

This Newsletter printed by All-Print, Salem, N.H.

Meeting/Membership Telephone Number (617) 628-4053

July-August 1997

Opinions expressed in the signed columns or letters of this *Newsletter* are those of their respective authors and do not necessarily represent the opinions of the Society, its officers or members with respect to any particular subject discussed in those columns. The mention of commercial products or services in this *Newsletter* is for the convenience of the membership only, and in no way constitutes an endorsement of said products or services by the Society or any of its officers or directors, nor will the Society be responsible for the performance of said commercial suppliers. We reserve the right to edit all material, either due to length or content, submitted for publication.

## — B&MRRHS CALENDAR —

- JULY 25-27, 1997** Lowell Folk Festival—NO REGULAR MEMBERS' MEETING in July.
- AUGUST 1997** MEETING CANCELLED DUE TO UNAVAILABILITY OF MEETING PLACE. Program will be re-scheduled for a later date.
- SEPTEMBER 20, 1997** Our annual Trek to Conway Scenic Railroad. See enclosed flyer for details. NO REGULAR MEETING IN LOWELL THIS MONTH.
- OCTOBER 11, 1997** Tis will be the B&MRRHS Annual meeting with Ron Dale Kerr as guest speaker.
- NOVEMBER 8, 1997** Bob Poore will be back again with slides on the MEC.
- DECEMBER 13, 1997** Members nite, bring slides (30 maximum), videos or films. A slide projector, VCR and screen are provided.

REMEMBER, ALL MEETINGS, UNLESS OTHERWISE NOTED, BEGIN AT 7:00 PM IN THE BOOTT MILLS.

### NOMINATIONS

Anyone interested in being nominated for office in the B&MRRHS, or in nominating someone else for office, should send a letter to the PO Box in Woburn or call the Society phone-line. This year the positions of President, V-President, Secretary, three (3) Directors and two (2) Alternate Directors.

DIRECTIONS TO THE LOWELL MEETING PLACE—at the traffic light near the Mogan Center, take a right or left depending on which way you come down French St., go past the little guard shack (Parking lot is on right—Boarding House Park is to the left), Walk over the trolley tracks and bridge. Into the courtyard, bear to the right and go to the end. The doorway will be lighted. Also look for signs.

**Due to construction, parking is not allowed in the Courtyard as in the past—Sorry.**

## STATE FUNDING BOOSTS TRAIN TERMINAL REHAB

LOWELL, MA.—The renovation of the former Boston & Maine Terminal in downtown was given a \$320,145 boost from a state grant to help restore its Victorian grandeur. The Northern Middlesex Council of Governments has announced the grant awarded to the National Park Service, the buildings owner. The former Rialto Theater, is located on Central St. The goal is to raise \$1 million to completely restore the building to its late 1800's style.

The project was selected because of its historic value and obvious ties to transportation, said Beverly Woods, spokesperson for NMCOG. When the restoration is finished the Park Service will use a portion of the building for a railroad display and the rest of the building would be used as offices or a restaurant.

The building was constructed in 1876 in flamboyant Victorian Gothic style. In the 1920's it was converted into the Rialto Theater and closed in 1961. The changes made in the 1920's will be removed.

*(Condensed from the Lowell Sun)*

---

## MECHANICVILLE QUERYING RESIDENTS ON DEVELOPMENT

MECHANICVILLE, N.Y.—The city is seeking direction from the public as it prepares a blueprint for economic development. The city Community Development Agency, which oversees city economic development and housing rehabilitation projects, has prepared a survey that will be mailed to residents.

Plans call for development of an industrial park and athletic field complex on a 25-acre parcel the city bought in the former Boston & Maine Railroad yard. "The development of about 14 acres in the former yards for industrial use is the key to boosting the city's economy," said Patrick Hildreth, head of CDA.

*(Daily Gazette)*

*Your Editor was recently out in Mechanicville and the yard is completely overgrown and looks like a landfill. Several buildings do remain and there is rail in spots.*

### Thanks...

Thanks go to the following for their contributions: Samuel Sayward, Ellis Walker, Harry Frye, Bob Warren, Brian Manning, Steve Cook, Paul Kosciulek, Atlantic States Ltd.

### Next Issue...

The deadline for the Sept./Oct. Newsletter is August 9, 1997. Please send all items to the Woburn PO Box.

## PUTT-PUTT-PUTTI!

TILTON, N.H.—The annual "rail track cars" get-together was held the first weekend of June for the ninth consecutive year. The two-day event began in Lincoln, N.H. at Hobo Junction and went to Weirs Beach on Saturday. Sunday saw the "putt-putts" travel from the Weirs to Tilton.

Organizer of the event, Paul Yorkis, of Medway, Ma. said more than 30 cars took part in the event with people coming from as far away as Virginia and Maryland. All six New England states were represented.

One track car owner, Jack Flagg of Marshfield, Ma. had his wife and their golden retriever, Heidi along for the ride. Flagg is the gentleman who just purchased the former Canadian National steam engine from the Hobo railroad and has it stored in Concord, N.H. and eventually hopes to have it restored.

*(condensed from the Union Leader)*

---

## ALL ABOARD!

BOSTON—Starting in October 1998, upper Essex County commuters will have the option of train service between Newburyport and Boston. That is the target of the MBTA to began commuter train service. Local state lawmakers are happy the project is underway but Ipswich town officials are watching the project. Selectman Patrick McNally said it is startling to see the proximity of many homes to the tracks now that trees have been cleared. Many homes are 50 ft. from the tracks and has presented a different environment for those that abut the tracks.

James Jackson, project manager for the "T" has said that an old concrete plant has been razed so that a station and parking facilities can be constructed just southwest of the traffic circle on RT. 1. Brush and other vegetation has been cleared, along with drainage conduits and fencing along the 8.7 miles through Ipswich, Rowley and Newbury. The month of May saw the start of construction on signals, gates and other work for train crossings at nine intersections.

The Newburyport station will have 838 spaces for parking in three different lots off Boston Way and Parker St.. The station will cost \$2 million and have an "old depot feel to it," according to Jackson.

Rowley will have a 238 space lot and a 832 foot long platform with no actual station planned for the stop.

*(Condensed from the Salem Evening News)*

---

## INTERESTED IN TROLLEYS?

The Lowell National park is currently seeking volunteers to assist Park trolley operations. The trolleys provide transportation between the LNHP Visitor Center and other Park sites. Volunteer positions include trolley operator and flagperson. Duties include operating the trolley, flagging at intersections, assisting passengers boarding and disembarking and providing visitors with information. Training is provided and to volunteer or for more information call 1-508-970-5032.

## ...AND A GREAT TIME WAS HAD BY ALL!

On May 3, 1997, the Society celebrated its 25th anniversary in Lowell, Mass.

During the day there was a display of 12 steam locomotive models, built by Wilbur Frey of Arizona, in the Boott Mills Complex. On display were the following:

The John Bull, Sandy River & Rangle Lakes RR #10 and #24, B&M 4-4-0 #1105, B&M 2-6-0 #1399, #1451, #1498 B&M 2-8-0 #2403, B&M 0-8-0 #601, B&M 4-6-2 #3669 #3719 B&M 4-8-2 #4113

The display was set up by members under the direction of Richard "Mayo" Nichols.

In the afternoon the regular members meeting was held in the amphitheater and our two guests, Hal Carstens and Dick Towle gave their presentations to a large number of members and visitors.

Mr. Carstens showed film footage of the Boston & Maine Railroad in its steam heyday all over the Conn River and other railroads of the area that are long gone.

Mr. Towle gave a slide presentation on the Boston & Maine in the 60's and 70's when the Boston & Maine had some nice defile power and was a busy railroad. Many of the scenes today are idle and long gone.

The evening banquet was held at the Brewery Exchange where members socialized and enjoyed the evening festivities.

A systems map, circa 1913, of the Boston & Maine was donated by member Donald Hodge to Chairman Kosciolk who received it on behalf of the Society.

The activities were topped off by another presentation of slides by Hal Carstens on the Boston & Maine RR in both steam and early diesel.

The Society extends its thanks to Chairwoman Patricia Byron, her committee of Paul Kosciolk, Dick Nichols, Richard Symms and Buddy Winiarz and the many members who helped set up the displays in the Boott Mills and especially to the members who came to the banquet.

*(A photo section showcasing the gathering can be found elsewhere in this Newsletter.)*

## OFFER MADE FOR AMTRAK NORTHEAST CORRIDOR

AMTRAK may be troubled, but the railroad isn't champ-ing(sic.) at the bit to accept an offer from private train operator in Billerica, Mass. to buy its Northeast Corridor Service. "We don't take it seriously," said Rick Remington, a spokesman for Amtrak's Northeast Corridor operations.

GUILFORD RAIL SYSTEM INC. wants to lease or buy the rights to provide passenger and freight train service on the line between Boston and Washington. Remington said AMTRAK has never sold any line to a private company.

But F. Colin Pease, GRS executive vice-president, said, "AMTRAK is grabbing for whatever concrete life-ring they can find." "We think it makes sense to look at privatizing portions of AMTRAK. Someone from the private sector is going to be more effective in running it profitably because we're

much more focused on the bottom line," said Pease.

In its annual report, AMTRAK said it lost approximately \$163 million on the Boston-to-Washington operation last year. However, Remington said that did not take all revenue into account, including that from AMTRAK's management of the MBTA's commuter rail lines.

Guilford operates rail lines throughout New England except in Rhode Island and helped privatize lines in Britain and New Zealand.

*(Boston Globe)*

### THE INTERCHANGE

FOR SALE: B&M silver plated souptureen, bean pot style with arrow logo. Send a large SASE to Ste. G717, 11613 124th Ave. NE, Kirkland, Wa. 98034-8100 for information.

FOR SALE: A collection of railroad date nails is available for private bids. I have no idea what railroads there are but if interested please send your questions and/or bid to: Lon Allbritton, Rt. 1 Box 496, Hockley, Tx. 77447 or call 409-931-5632.

### CORRECTION

In the last issue I had a photo of the "Tiger" and I printed that it was the first locomotive of the Boston & Lowell RR. Well member and Society Historian Harry Frye and member Ellis E. Walker have written to tell me it was the first locomotive on the Whitneyville & Machiasport RR of Maine.

The "Tiger" was built by Hinkley & Drury of Boston on August 22, 1842 with 9X12 cylinders, 42" drivers, 60 2" tubes 6 ft. long originally inside connected and cost about \$3,000.00. She served the W&M for 50 years until the road was abandoned in 1892.

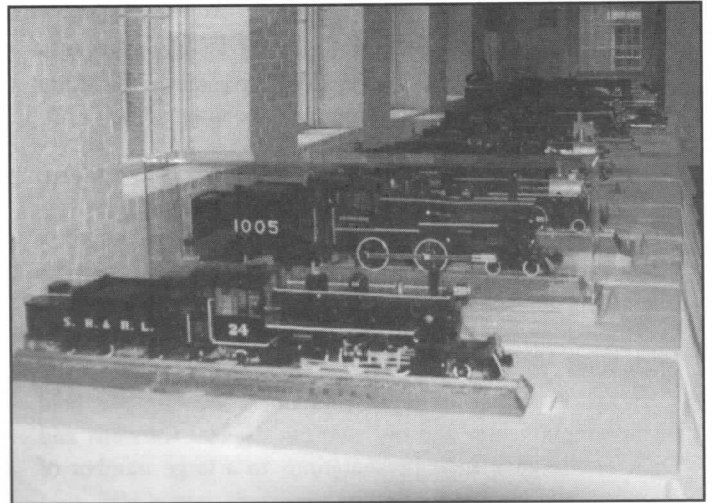
Her sister the "Lion", an identical twin has been preserved and is on display at the University of Maine at Orono and is thought to be the only Hinkley machine in existence.

Thank you gentlemen.

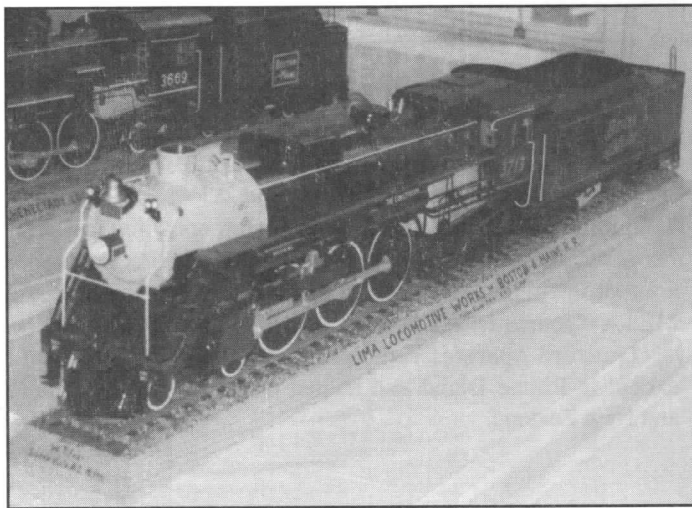
# SCENES FROM THE B&MRRHS



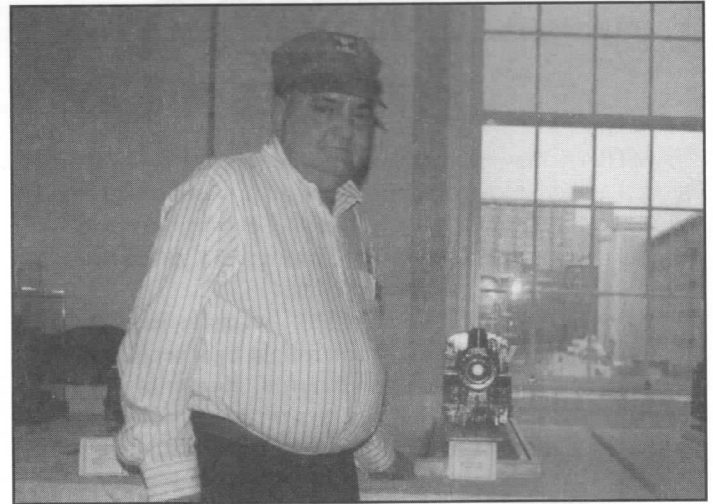
#1 Visitors looking at the display of locomotives.



#2 Lineup of locomotives on display.



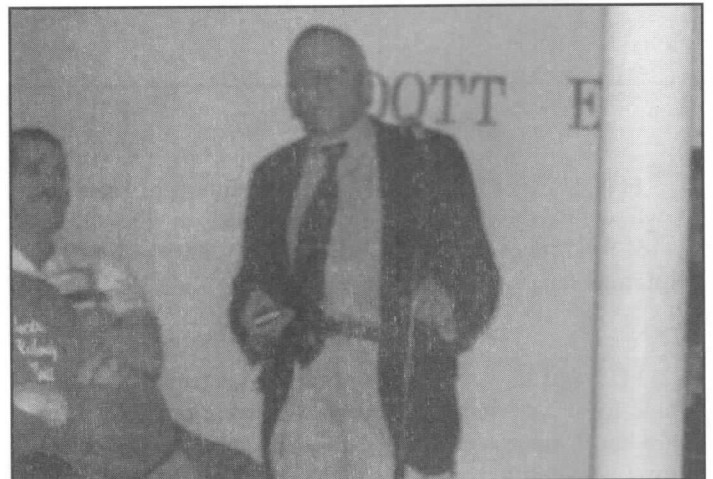
#3 B&M P-4-a #3713 which survives today at Steamtown National Park in Scranton, Pa.



#4 Dick "Mayo" Nichols our display chairman.



#5 A display of B&M Bulletin covers.

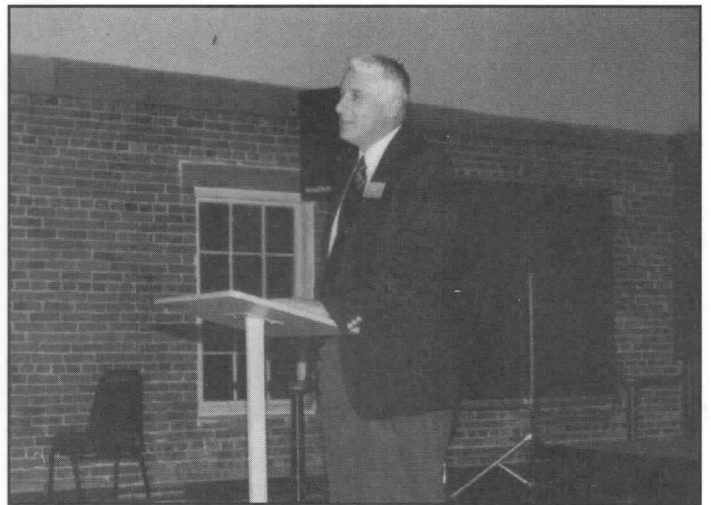


#6 Dick Towle giving his presentation at the Boott Mills.

# SILVER ANNIVERSARY GALA



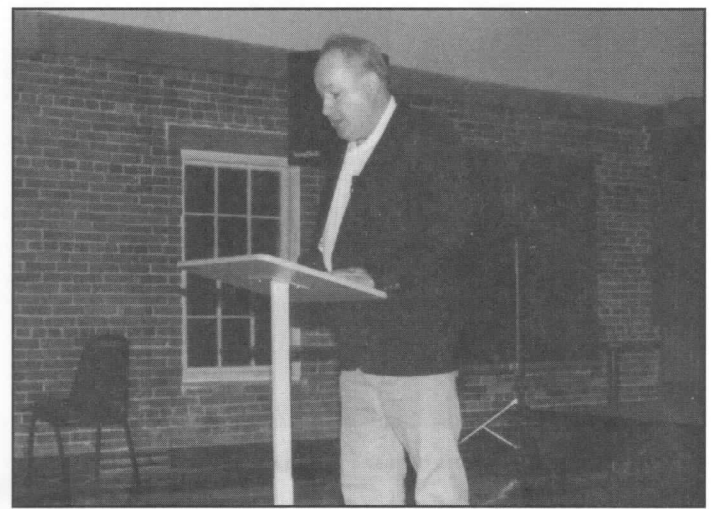
#7 B&M #410 display in the Boott Mills.



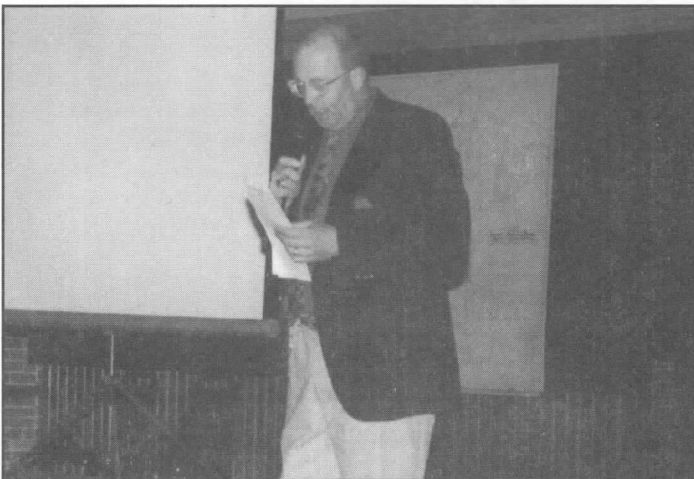
#8 Founding member Carl Byron addressing the members at banquet.



#9 Chairman of the Board of Directors Paul Kosciolk addresses the membership.



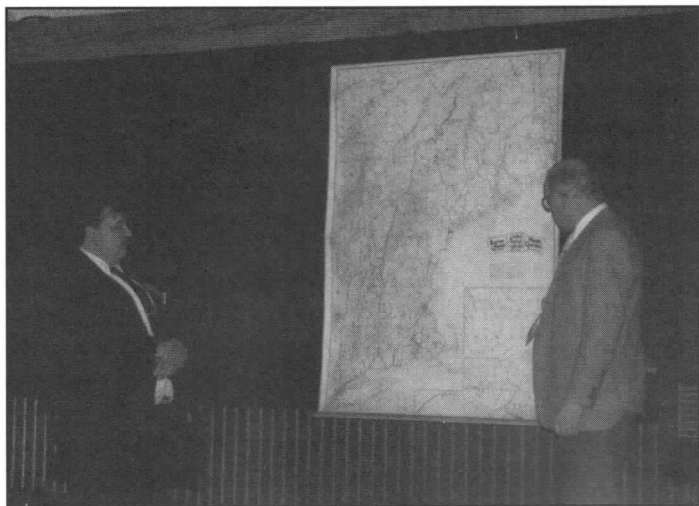
#10 President Joe Shaw addressing the membership.



#11 Program Chairman Jim "Gilligan" Byington introducing guest speaker Hal Carstens.



#12 Harold "Hal" Carstens answering questions during his presentation.



#13 Member Don Hodge presenting a B&M systems map to Chairman Paul Kosciolek.



#14 Joe Shaw, Patricia Byron & Paul Kosciolek giving out prizes.



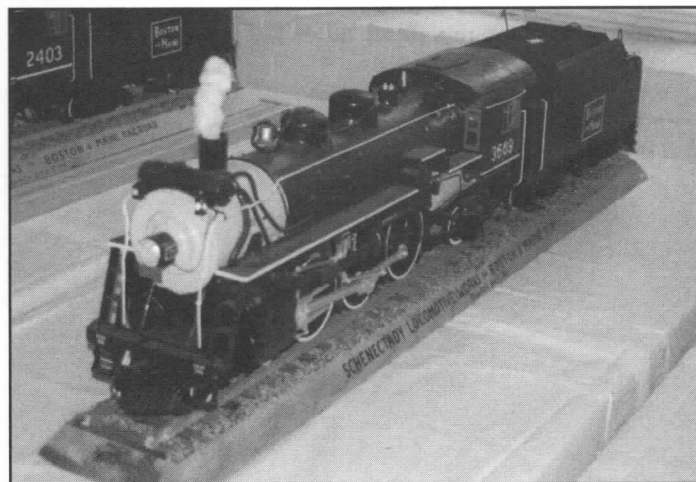
#15 Banquet Chairwoman Patricia Byron addressing the membership at banquet.



#16 Members enjoying Hal Carstens presentation.



#17 B&M Mogul #1451 (2-4-0) on display, built by Wilbur Frey.



#18 B&M P-2-b #3669 (4-4-2) on display, built by Wilbur Frey.

*Photos on all three pages by Mike Basile*

---

## SIDINGS...

For anyone interested in the Rutland Railroad their Society can be reached at: Bruce Curry, Membership Secretary, RRHS, 23 Andrea Crescent, Nepean, Ontario K2J 1G8 Canada.

\*\*\*\*\*

### FILE THIS UNDER "HOW STUPID CAN I BE?"

Old Orchard Beach, Me.—James Hoag, 30, of New Hampshire was in a Portland hospital recovering from injuries he sustained from being hit by a passing train. According to police reports, witnesses said that Hoag was trying to walk as close as possible to a moving train without being hit. Unfortunately he got too close and was hit by one of the cars.

(*Atlantic States Ltd.*)

\*\*\*\*\*

Hyannis, Ma.—Amtrak has just cut the New York to Cape Cod train for the summer after 11 seasons. Ridership was at 1,000 per weekend and Amtrak lost \$50,000 on the service according to an Amtrak spokesman.

(*Boston Globe*)

\*\*\*\*\*

According to the "ARROW" of the N&W HS lists the following former B&M equipment:

#405 Air Instr. Built 1947 by Pullman-Standard for the B&M  
1958 Purchased by Wabash and numbered #1424.  
1964 Acquired in merger and renumbered #1831.  
1969 Converted to Air Brake Instruction car #405. Sold to NERR\*

\*No indication of what the name of this road.

XO #418 built by Pullman-Standard as B&M #70 Safety car then Wabash #1570 Cafe Lounge.

1964 Acquired by N&W through merger.

1971 Converted to Safety Car donated to Virginia Museum of Transportation.

1993 On display at VMT.

\*\*\*\*\*

A flyer put out by the Lackawanna & Wyoming Valley Rwy. HS for funds to help restore Boston & Maine Pacific 4-6-2 #3713 was sent to your Editor and if anyone is interested in donating they may send donations to: Locomotive Restoration Fund, Lackawanna & Wyoming RWS, PO Box 3452, Scranton, Pa. 18505-8452.

According to a recent article in the Boston Globe about Lakes in New England it mentioned that there are railroad cars at the bottom of Lake Winnepesaukee.

\*\*\*\*\*

The Milford & Bennington, of New Hampshire which operates trains on the former B&M's Keene branch, has been shut down by the IRS for non-payment of taxes. According to reports a new operator is being sought for the line.

(*Atlantic States Ltd.*)

\*\*\*\*\*

WATERBURY CENTER, VT.—Neighbors of a popular tourist attraction are concerned that a proposed tourist train for the area will be too noisy. Residents are worried that plans to build a one-third scale railroad complete with covered bridge and 200-foot tunnel, behind the Cold Hollow Cider Mill on Rt. 100, would lead to other attractions. But Eric Chittenden, owner of the Mill, said he doesn't plan to build an amusement park and wants to work with neighbors.

(*Boston Globe*)

## MEMBERSHIP RENEWALS

Please note that when sending in your renewals for membership that the address is on the form and it is:

B&MRRHS MEMBERSHIP  
P O BOX 9116  
LOWELL, MASS. 01852

---

## AAPRCO GATHERING SET FOR BRETTON WOODS SEPTEMBER 2

A gathering of privately-owned rail passenger cars, which is to include the former B&M sleeper *Salisbury Beach* will converge upon Bretton Woods, N.H. on September 2, 1997.

The special train will depart Chicago on Saturday, August 30, and will traverse Conrail to Montreal. At Montreal interchange of the train will be made with Canadian National on Monday, September 1. It will then travel to Groveton, N.H. via the Canadian National and St. Lawrence & Atlantic, thence to Hazens on the NH&VRR and then to Whitefield, N.H. It is reported that although Amtrak F40s are to be used for most of the trip, the units' head-end power will be cut out during the section from Groveton to Whitefield while NHVRR power takes over (towing the entire train including the F40s). At Whitefield there will be a power runaround and the F40s will then operate the train to Bretton Woods/Fabyans under

the command of Conway Scenic FP9s.

The train is scheduled to be pulled to Crawfords in two sections by CSRR. It will be parked at Fabyans until Friday September 5 at which time it will depart for Hazens, Groveton, take a side trip to Yarmouth over the St.LA and thence back to Montreal and Chicago via the D&H to Albany.

This sounds like the railfan move of the year if it all goes as planned. Unfortunately much of the "rare" mileage will take place at night over sections of the former B&M/MEC lines; but who knows. A little delay (or a few little delays) could give us some great photo opportunities on the Mountain Division in daylight. Anyone know a Customs official??

*Excerpted from AAPRCO preliminary schedule courtesy of Tom Pearson. (JAR)*

## LOWELL FOLK FESTIVAL

This year's Lowell Folk Festival will be July 25, 26 & 27. Members are needed to help set up the display in the combine on Friday the 25th and to help man the Combine on the 26th & 27th. Anyone who can help please contact the Society by either mail at the Woburn PO Box or call the Society phone and leave a message. Thank you.

## B&MRRHS DAY AT CONWAY SCENIC

Enclosed please find the flyer for the Society's annual trek to the Conway Scenic Railroad. This year we are holding it in September to hopefully get a bit of foliage but other than the change of date everything also remains the same. Come ride the trains and enjoy the delicious ham & bean supper.

Remember to tell the "ticket agents" that you are with the Society when picking up tickets at the station.

## UPCOMING EVENTS OF INTEREST...

### JULY 1997

July 4, 1997 Two different trips on Green Mt. RR , "Ludlow Ltd." and "Ludlow Summit Excursion." For info call 802-463-3069.

July 26 & 27, 1997 Lowell Folk Festival downtown Lowell, Mass.

### AUGUST 1997

August 4, 1997 At Conway Scenic's 23rd Birthday celebration with special fares. Call 356-5251 (in N, Hampshire) or 1-800-232-5251 for information.

August 30 & 31, 1997 Music Mountain Express, a special children's jazz program. Call for information.

### SEPTEMBER 1997

September 6, 1997 Green Mtn. RR excursion from Bellows Falls, Vt. to Rutland. Fares are \$35 for adults and \$25 for children. Call 802-463-3069 for information & reservations.

September 13, 1997 Model Railroad & Railroadiana Show in conjunction with the Glory Days of Railroad Festival in White River Jct., Vt. 10 -5. Fares \$2 for adults, \$1 for children under 12 years \$5 Family pass. Call 802-296-3001 for information. For information on Glory days call 802-295-6200.

September 20, 1997 B&MRRHS Day at Conway Scenic RR, see enclosed flyer.

### OCTOBER 1997

October 4, 1997 MassBay RRE Fall FOLIAGE Excursion from Boston to Albany, N.Y. Send a SASE for trip information to Mass Bay RRE, PO Box 4245BV, Andover, Ma. 01810 or call 617-489-5277.

October 11, 1997 Cape Cod Chapter of NRHS Train show at Cape Cod Tech School, Rt.6 (Sandwich Rd.) in Bourne, Ma. 10-4 Fares: \$2 adults, Seniors & children (6-15) \$1 and Family Pass \$5. Call 508-746-6558 for information.

October 18, 1997 Conway Scenic 23rd Annual Railfan's Day including flea market, equipment demonstrations, special runs and night photo session. Call 1-800-232-5251 or 356-5251 (NH) for registration form.