

DENNIS ADAMS, EDITOR, 28 SUMMER ST., EXETER, NH 03833

SEPTEMBER 1986

SCOTT WHITNEY, WEST END EDITOR, 25 MAPLE AVE., CLAREMONT, NH 03743

Opinions expressed in the signed columns of this Newsletter are the opinions of those authors of those columns and do not necessarily represent the opinions of the Society, its Officers or members with respect to any particular subject discussed in those columns. Mention of commercial products in this Newsletter is for convenience of the membership only, and in no way constitutes endorsement by the Society or any of its Officers or Directors.

B & Meeting

NEXT MEETING:
SEPTEMBER 20, 1986
VALLEY RAILROAD
ESSEX, CT.
ALL DAY

Our Annual Trip to the Valley Railroad in Essex, CT.

Come join the B&MRRHS and the New Haven Railroad Historical & Technical Society for a day of railfan amenities at the Valley Railroad in Essex, CT. Plans for the day include train and boat trips, a softball game and more fun! Be there! **NOTE CHANGE OF MEETING DATE!!!**

SEPTEMBER 7, 1986

Softball Game: B&MRRHS Flying Yankees vs. SPRHS Volunteers!

The B&MRRHS **Flying Yankees** take to the field for the opening of their Convention-shortened season against the Salisbury Point Railroad Historical Society **Volunteers** at Sherberne School field in Portsmouth, NH. Warm-ups at 1:00 p.m., game time is 2:00 p.m., with a **BYOF** barbeque at Joe Shaw's to follow! Everyone who plays, attends, (and even softball-scoffers) invited!

SEPTEMBER 13, 1986

Conway Scenic Railroad Railfan's Day!

The Conway Scenic Railroad's Railfan's Day features steam and diesel operation, doubleheaders, mixed trains, three-way meets and much, much more. Be there for the time of your life!

OCTOBER 15, 1986

THE B&MRRHS' 15th ANNIVERSARY!!!

October 1986 marks the 15th Anniversary of the Boston & Maine Railroad Historical Society, and to celebrate, we will be holding a special dinner meeting at the Reading Depot Restaurant, and our featured speaker will be **Mr. George Drury** of Kalmbach Publishing! Come and join us as we celebrate our 15th, an order form was enclosed in your last BULLETIN/Newsletter mailing! Order early, as seating is limited! **NOTE CHANGE OF MEETING DATE AND LOCATION!**

NOVEMBER 8, 1986

National Model Railroad Month!

November is **National Model Railroad Month**, and to celebrate, we will once again be holding our meeting at the **North Shore Model Railroad Club** in Wakefield, MA! Bob Foley and crew once again promise an exciting evening of operation as Boston & Maine power once again takes over the rails of the Chesapeake System! Be there! **NOTE CHANGE OF MEETING LOCATION!!!**

DECEMBER 13, 1986

Members Nite/White Elephant Auction!

The B&MRRHS closes out the year with a new first: a **White Elephant Auction!** Get rid of that old railroadiana, model or magazines and help out the B&MRRHS at the same time. Basic rules are: All items must be in operating condition (when applicable), you set the base price, and let our auctioneer go for it! The B&MRRHS will take **20%** of the **final** sale price. Of course, the B&MRRHS will be happy to accept donations for the auction too!). Following the auction, a **Member's Nite** will be the entertainment, all members are invited to bring a maximum of 20 slides or 200' movie. A projector will be provided for slides, but please bring a projector if you wish to show movies!

THERE WILL BE NO MEETINGS IN WOBURN IN SEPTEMBER, OCTOBER OR NOVEMBER!!!

Saturday, November 1, 1986 Entire route - Concord to Lincoln New Hampshire (first time in 10+ years) "Mileage Collectors Special" (72 mi. each way), using Winnepesaukee Railroad equipment. Multiple photo stops/run-bys. Mass Bay RRE, Box 136, Ward Hill, MA 01830.

It now appears that Waterville Shops won't be closed, about 35 employees will keep it running, although it's not as busy as it was a year ago. It's just not feasible to have to send the engines to the central and western divisions for repairs. Colonie Shops is down to a handful of personnel. East Deerfield Shop renovations are coming along at a good pace. Two new bays are well underway, as well a new North Pit track, was recently completed. The South Pit track is going to be put out of service so it can be torn up. Two new "G" sand domes should be put in operation soon. The D&H 420 which sustained derailment damage is due to be sent to Waterville from Rigby for repairs. If you thought the MEC GP38's were only used on the MEC, you're wrong, they're slowly filtering onto the D&H. First stop for them is East Deerfield, where 98 channel radios are being installed in them. Plans are for all the MEC GP38's to get them along with all the other Guilford road units.

GP40 #325 is at Billerica Shops being taken apart for salvage parts. This was ex-CR #3234. GP9 #1702 is also being scrapped after vandals set it afire at White River Junction. The motor appears to be one of the few salvageable parts and is due to be put into the 1848 (GP9) which is at Billerica. Other units in the shop either waiting for repairs or being disassembled for parts are: GP7 #1572, GP9 1727, 1714, 1742, 1728, GP18 1848, GP40 322, 325, 336.

Plans are to retire the 1124 (SW1) and keep the 1127 going have somewhat changed, both will stay in service.

The top three types of units that have been classified as giving the highest rating in percentage for **NOT** being out of service for maintenance are: The slug set 300-100-301; SD 39-2 690, 691, 692; and GP18's 1751, 1752, 1753, 1754, 1755. The 1850 (1750) is at Colonie and was heavily damaged in a derailment. On the subject of SD39-2's, it was just learned that Guilford has just purchased another unit from Morrison Knudsen and will be numbered **693. From Don LeJeune.**

Special thanks to the following people for manning the B&MRRHS' booth at the Minuteman '86 Convention in Boston:

Joe Shaw	Ed Felton
Jeff Ursillo	Dave Lamson
Dick Symmes	Dodi Lamson
Rob Quagan	Bob Hagopian
Ron Eames	Dennis Adams

Without the selfless dedication of these people, the B&MRRHS' success at the Convention would not have happened. **THANK YOU!**

A new book! Bangor & Aroostook, the Maine Railroad, by Jerry Angier and Herb Cleaves! This book documents the origins, constructions, operations and the lives of its employees in over 270 pages and 300-plus photos (more than 25 in full color) spanning the 95 years of the B&A's existence. More information is available from: Flying Yankee Enterprises, Attn. Jerry Angier, 69 Brentwood Road, Cape Elizabeth, ME 04107

RAILROAD FREQUENCIES

We present this handy list of New England railroad frequencies, courtesy of the Salisbury Point Railroad Historical Society. Cut it out, mount it to thin cardstock and keep it with your scanners!

BOSTON & MAINE

161.160 Dispatcher
160.800 Road
161.400 Yard
161.370 MOW
161.250 Police
161.230 Police
161.310 MBTA
161.230 Car Knocker
160.350 Hump
160.440 Piggyback Site
161.190 Car Port.
160.260 MBTA Car Dpt.

MAINE CENTRAL

160.380 Road
160.620 Yard
161.250 P.T. Yard

BANGOR & AROOSTOOK

160.230
160.440 Channel 1
160.920 Dispatcher
160.320
160.530

CONWAY SCENIC

161.250

PROVIDENCE & WORCESTER

160.890 MOW
160.650 Dispatcher
161.100 Yard

FORE RIVER RAILROAD

160.215

PORTLAND TERMINAL (MEC)

161.250
160.620

CENTRAL VERMONT

160.770 Yard
160.935 Yard
161.415 Channel 1
161.205 Channel 2

AMTRAK

160.800
161.295
161.325

DELAWARE & HUDSON

160.530 Dispatcher
160.590 Road
160.320
160.500
161.400
161.490

LAMOILLE VALLEY

160.230
161.340

CONRAIL

160.560 Agent
161.520 Main
161.860 Hump
160.980 Yard
161.070 Road Ant.
161.130 Maintenance
161.220 Police
161.280 Commuter
160.305
160.215
160.230
160.245
160.290
160.355
160.410
160.530
161.325
161.370
161.400
161.520
161.550

GRAND TRUNK

160.530 Dispatcher
161.590 Road
161.205 Road & Yard
161.415 Road & Yard
160.770 Yard

VERMONT RAILWAY

161.010 Road
160.290
160.710

VALLEY RAILROAD

152.360

BAY COLONY/CAPE COD & HYANNIS

161.355
160.305

PIONEER VALLEY

160.355
161.085

CANADIAN PACIFIC

161.475 Road
160.425 Yard
161.875 Yard

GREEN MOUNTAIN

160.605
161.445

CLAREMONT & CONCORD

160.950

FINAL B&MRRHS NOMINATING COMMITTEE REPORT

The final report for the 1986-1987 slate of officers and directors is as follows:

For President Scott Whitney
For Vice President Carl Byron
For Secretary Ronnie Shaw
For Treasurer Al Hale
For Board of Directors (4 positions open)
Dave Lamson
Richard Nichols
Gerry Babyok
John Alan Roderick
For Alternates to Board of Directors (2 positions open)
Dora Lamson
Rob Quagan

Best wishes for speedy recoveries go out to B&MRRHS Secretary **Ronnie Shaw**, former BOD member **Jim Reardon** and **Virginia Allen**, wife of former BOD member and sandblaster extraordinaire **Bob Allen**, who are recovering from recent illnesses. Get well soon!

Arnold Greenleaf informs us that the diamond at the south end of the Mechanicville yards where the Boston & Maine crosses over to the Delaware & Hudson has been ripped out. The B&M line is now double-tracked right up into the D&H yard.

Also contributing to this Newsletter: John Osmun, Truman Parkinson, Dick Pearson, George Wiseman, Fourtin Powell

**YOUR 1986-1987 DUES!!!
THIS IS THE LAST ITEM YOU WILL RECEIVE FROM THE B&MRRHS UNLESS YOU HAVE PAID**

Basic	\$17.00
Basic/Spouse	\$20.00
Contributing	\$25.00
Sustaining	\$35.00
Supporting	\$50.00
Benefactor	\$100.00
Corporate	\$500.00

Send dues payment to B&MRRHS, P.O. Box 2362, Harwood Station, Littleton, MA 01460.

HISTORIC DURHAM NH DEPOT TURNS 90

Durham's famous railroad station, 90 years old this year, is considered a classic example of turn-of-the-century railroad architecture. The small Victorian depot, well known to railroad buffs and even better known to ice cream lovers as the UNH Dairy Bar, has an illustrious past.

Built in 1896 to serve the East Lynn, MA, passengers of the Boston & Maine Railroad, the depot served that community well for 16 years. In 1912, it was dismantled and shipped by rail to Durham, where it would be reconstructed to serve a greater need as the station for the tiny but growing college community for the next 55 years. For many years, at least 16 trains passed through the town each day. They had names like "State of Maine," "Bar Harbor Express," and "Flying Yankee" (the first streamliner to serve Durham). The trains ran on time in those days, and local people could tell which train was passing by just by looking at their watch.

Many UNH students commuted by train. It was common for as many as 200 students to return to campus on the Sunday night train. At vacation times, the station bustled with a party-like activity as students, loaded with luggage, waited for their trains. During World War II, the college's ROTC unit was inducted into federal service the week of the Junior Prom and shipped out from the Durham Station. Some time later, two platoons returned home from the war through the same station.

The Durham Historical Museum has two long bamboo poles that were used to deliver messages to train engineers. The station agent would receive a telegraph message, write it down and clip the note to the end of the pole. As the train passed, he would hold the pole up so that the engineer could grab it. The engineer would remove the note and toss the pole to the ground for the station agent to retrieve. At 7:09 p.m., on June 30, 1967, the last regular passenger train stopped in Durham. From Foster's Democrat. **From Preston Johnson.**

Saturday, October 4, 1986 Boston to White River Junction, Vermont "Fall Foliage" Railroad Excursion using AMTRAK eqpt. One day only, via Conrail ex-NYC Boston & Albany Route to Springfield and Boston & Maine Connecticut River Line. Suburban stops at Back Bay, West Natick, and Worcester. Optional side trips on "Belle of Brattleboro" river boat and on Green Mountain Railroad. For prices and details, call (617) 277-2843 or write Mass Bay RRE, Box 136, Ward Hill, MA 01830.

MINUTEMAN '86 CONVENTION HIGHLIGHTS!!!



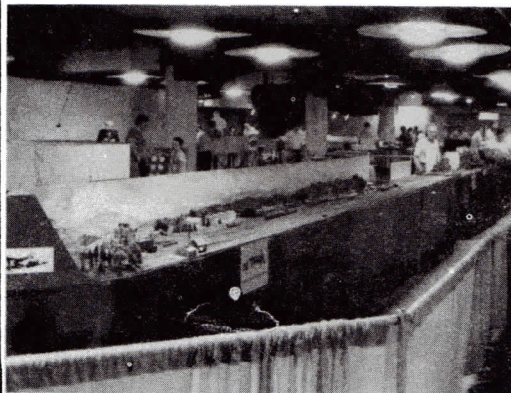
Here is the B&MRRHS booth at the Minuteman '86 Convention in Boston.



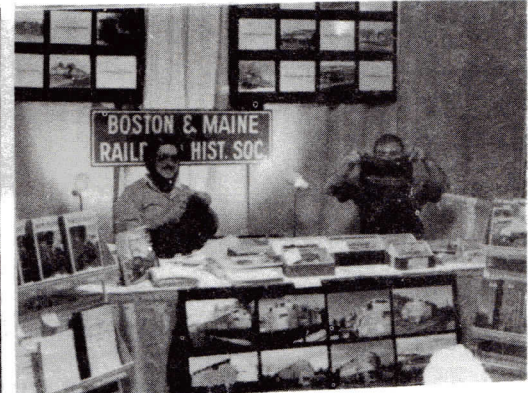
Conrail "kept it moving" with a friendly smile!



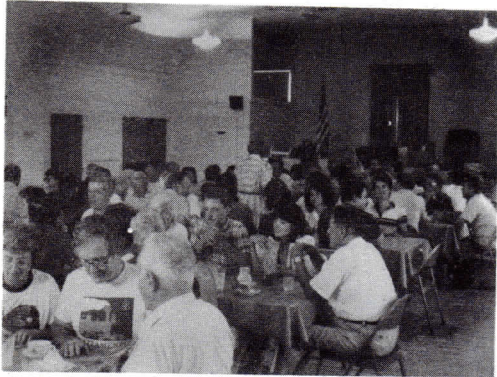
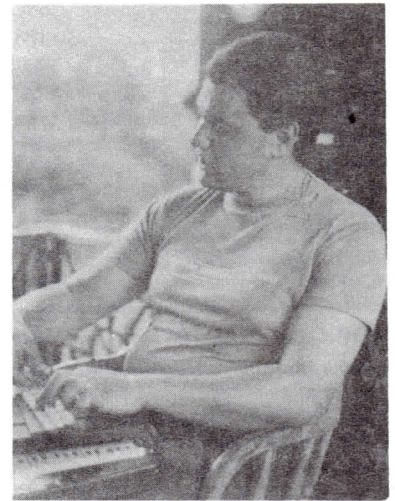
Arnold Wilder worked the R&LHS booth, and kept up the B&MRRHS' morale too!



The N Trak and HO modular railroads stretched for (scale) miles!



Jeff and Bob man the B&MRRHS booth Sunday afternoon



Boston & Maine Railroad Historical Society

Incorporated

P.O. BOX 2362 • Harwood Station • Littleton, MA 01460

FORWARDING AND ADDRESS CORRECTION REQUESTED

SEPTEMBER 1986

FIRST CLASS MAIL
NON-PROFIT
ORGANIZATION

DEADLINE FOR OCTOBER NEWSLETTER IS SEPTEMBER 13

B&MRRHS VISITS THE MINUTEMEN '86 CONVENTION AND CONWAY SCENIC RAILROAD!
SPECIAL PHOTO EXTRA ISSUE!!!