

Boston & Maine Railroad Historical Society Incorporated

File No. 9

Nahua N.H. Train Wreck of the Red Wing

11-12-1954

Nashua, N.H. Train Derails, Nov 1954

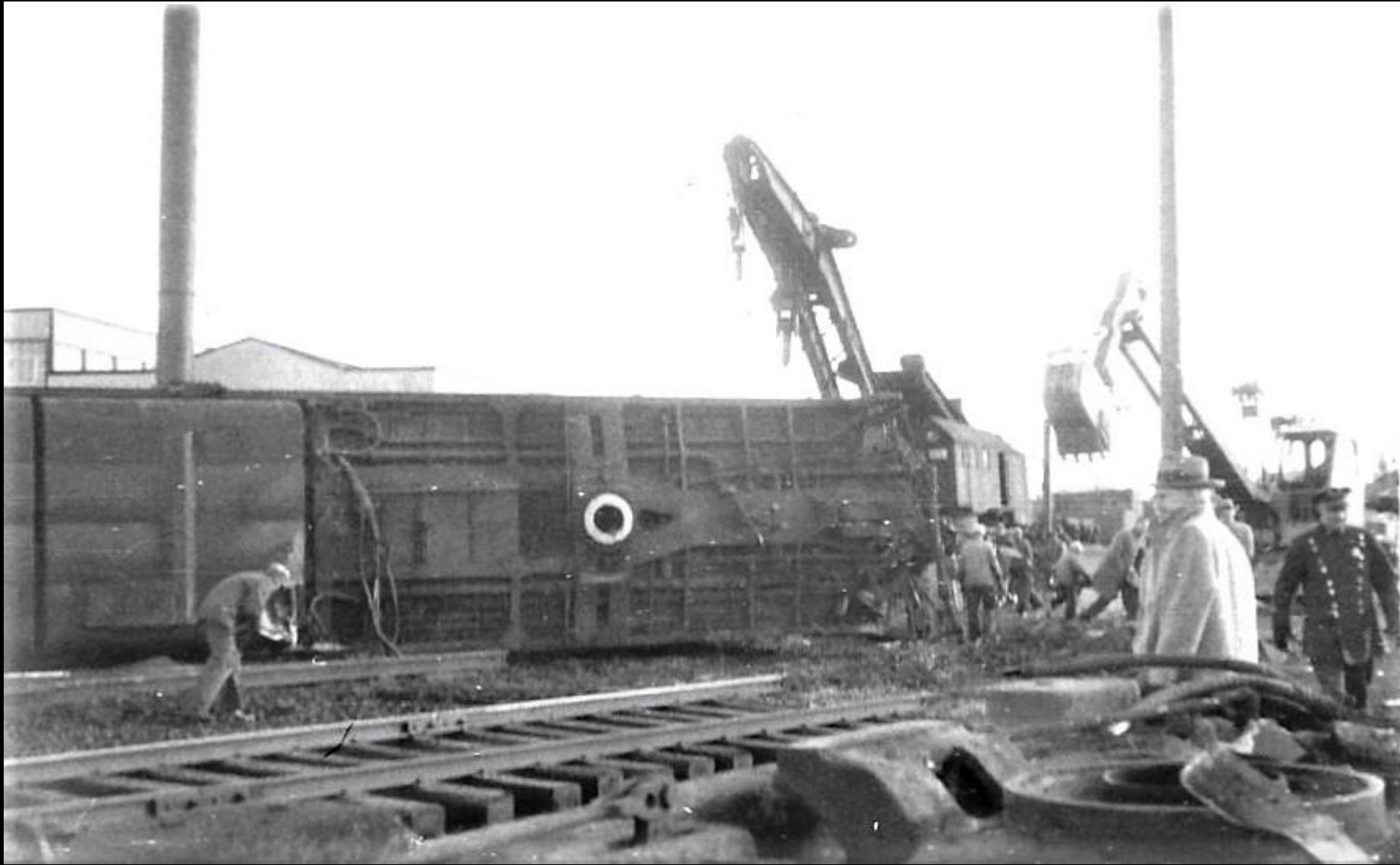
The Oneonta Star New York 1954-11-13

- **B.& M. Train Wrecked, Woman Killed. Injures 21, Cars Overturn**
- Dawn Crash Nashua, N.H., Nov. 12. (AP) – A crack Montreal-Boston express derailed, overturned and smashed into a mass of wreckage at dawn today in the Union Railroad Station yard here.
- One passenger was killed, 21 others injured. It was the first fatality to a passenger on the road since 1918. Cause of the wreck was not immediately determined.
- A Boston and Maine Railroad spokesman said the train approached the station – where it was scheduled to stop – ‘at excessive speed.’ He said brake failure of the speed could have caused the accident.
- The train was the Red Wing, made up of eight cars and a double unit Diesel engine. Only the foremost of the engine units and Pullman Club car at the rear end of the train remained upright. The others overturned and demolished the tracks as they skidded to a halt.
- The baggage-mail car landed on its roof. Other cars smashed into the freight cars standing on a siding, wrecking two of them, and ripping through the concrete and masonry wall of an adjoining building.
- The trucks under several cars tore loose and smashed through the wall of the freight shed, coming to scattered rest in the railroad yard. Taxicabs were pressed into service to help the overworked local police ambulance carry injured to hospitals.
- Several hours elapsed before railroad workmen were able to clear a path for a huge wrecker crane which lifted the wrecked coach so the body could be removed.
- The train engineer, Samuel Burns, 62, of Saugus, told Nashua police he applied the brakes as he approached the station, adding: There were sparks, a swish and then everything left the rails.” Albert s. Baker, assistant to the railroad president, told newsmen: “The train came into Nashua at excessive speed. It was supposed to stop here. Exactly what speed was we don’t know – but it was excessive, I can’t go beyond that.” Baker added: “I don’t know, now why the speed was excessive.”
- The railroad will conduct an investigation. New Hampshire Public Utilizes Commission agents were on the scene early.



Boston & Maine Train Wreck of the Red Wing 1954

The southbound Red Wing #302 derailed at a speed of 70 mph on a curve restricted to 30 mph entering the Nashua New Hampshire Station



The second B&M Unit E7 #3820 derailed and overturned.



The second view of B&M E7 Unit #3820 overturned.



Boston & Maine Railroad R.P.O. #3100 landed on it's roof..



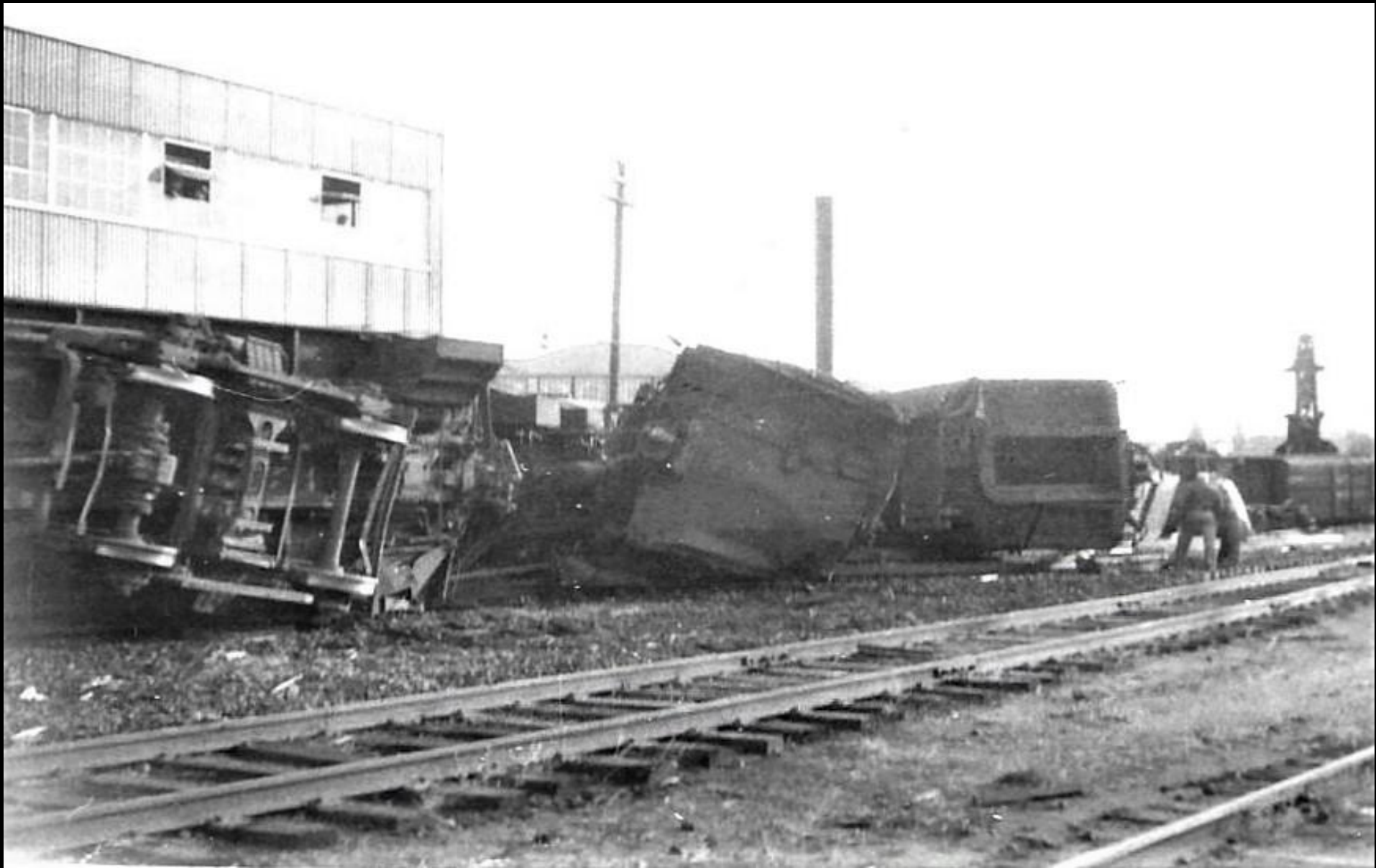
View of B&M R.P.O. truck w/ track gang



Boston & Maine Railroad Baggage Car #3213 overturned



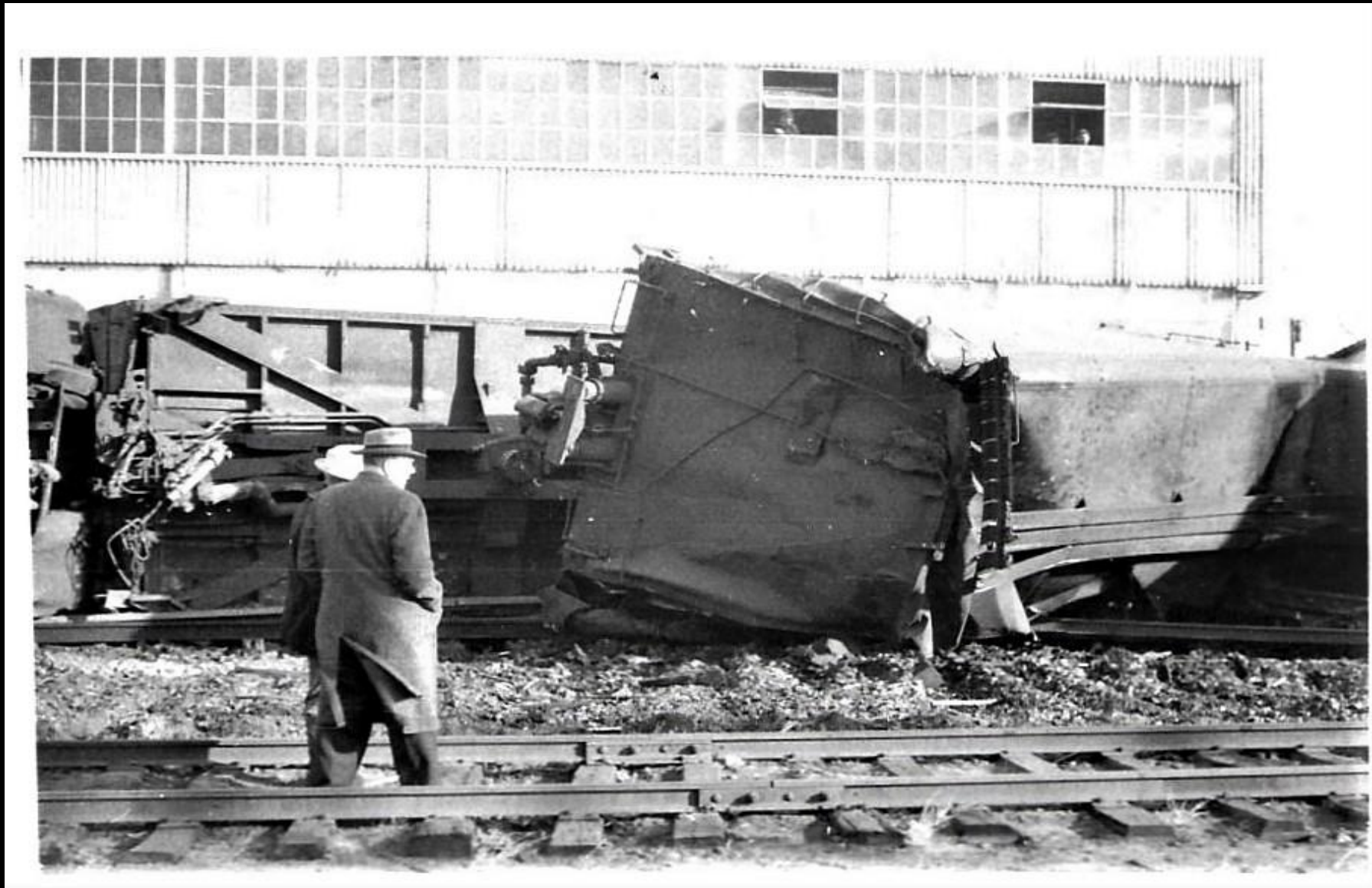
View Left to Right GPEX Car #203 - B&M Baggage Car #3213 – B&M R.P.O. #3100

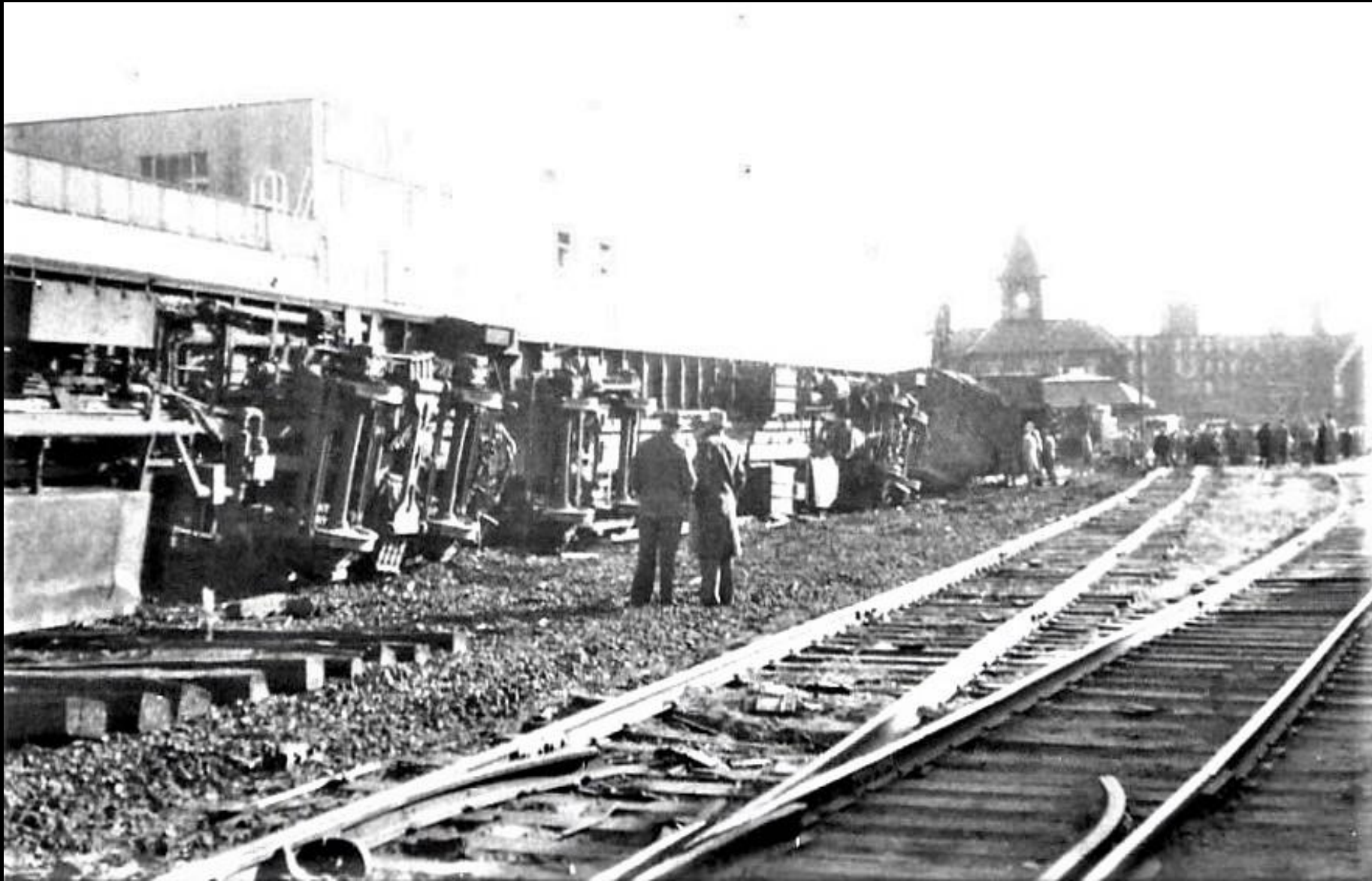


View Left to Right: C.P. Baggage Car #4241 – GPEX Car #203 – B&M Baggage Car 3213

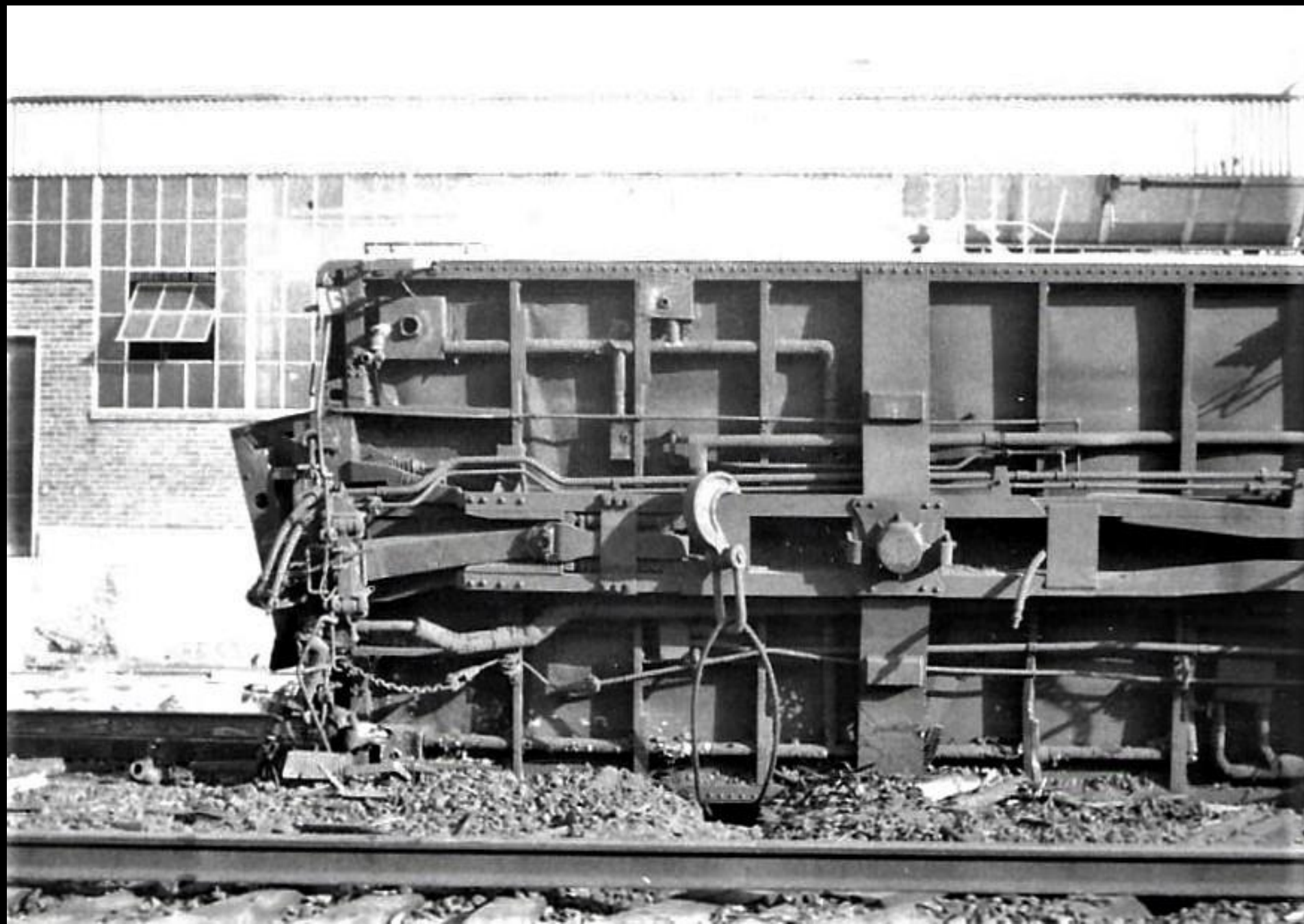














Passenger Trucks derailed into the Freight Shed

12



KODAK SAFETY FILM

12



A Row of damaged derailed passenger Trucks







Boston & Maine 200 Ton Wrecking Crane M 3365

The Boston & Maine Railroad Southbound Red Wing ICC accident report #3600

- **Friday, November 12, 1954**
- The southbound Red Wing, #302, derails at a speed of 70 mph on a curve restricted to 30 mph entering the Nashua, New Hampshire station.
- This accident results in the death of 1 passenger, and injury of 35 passengers, 5 railway mail clerks, 2 Pullman Co. employees, 2 buffet-sleeping car employees, 1 railway express messenger, 4 train service employees, and 4 employees not on duty.
- There is tremendous equipment and track damage. The second unit and the first four cars were off their trucks. The first to the seventh cars overturned. The first diesel and the rear car are somewhat damaged.
- The consist is B&M E-7's #3818 and 3820, B&M RPO #3100, B&M baggage #3213, GPEX #203 with cream, CP Baggage #4241, B&M American Flyer coach #4599, CP coach #2173, B&M sleeper Butler University, and CP Buffet Compartment-Solarium-Observation-Sleeper Cape George.
- Butler University is tipped on its side and Cape George is derailed. The trailing E-7 #3820, flipped over on its side, is destroyed.
- The ICC accident report #3600, Robert W. Jones, and consist photos from L.H. Stephenson Jr.
Information: Compiled and Edited by; Richard K. Hurst
- Donation of photographs by; Paul T. Kosciolk