

*119<sup>th</sup>  
Annual Report*

**YEAR ENDING  
DECEMBER 31, 1951**

**BOSTON and MAINE RAILROAD**

M 3118 BM 951 976.904

## BOARD OF DIRECTORS

|                        |                  |                          |                   |
|------------------------|------------------|--------------------------|-------------------|
| PHILIP R. ALLEN*       | Walpole, Mass.   | EDGAR C. HIRST           | Concord, N. H.    |
| ROGER AMORY            | Boston, Mass.    | HARVEY P. HOOD           | Brookline, Mass.  |
| RICHARD L. BOWDITCH    | Cambridge, Mass. | ERNEST M. HOPKINS        | Hanover, N. H.    |
| HUGH J. CHISHOLM*      | Portland, Maine  | AUGUSTUS P. LORING, JR.† | Beverly, Mass.    |
| T. JEFFERSON COOLIDGE* | Brookline, Mass. | JAMES L. MADDEN          | Danvers, Mass.    |
| FAIRMAN R. DICK        | New York, N. Y.  | JOHN R. McLANE*          | Manchester, N. H. |
| HARRY H. DUDLEY        | Concord, N. H.   | ROY L. PATRICK*          | Burlington, Vt.   |
| EDWARD S. FRENCH*      | Springfield, Vt. | PHILLIPS M. PAYSON       | Portland, Me.     |
| JAMES GARFIELD         | Cambridge, Mass. | WILLIAM B. SKELTON       | Lewiston, Me.     |
|                        |                  | ROBERT W. STODDARD*      | Worcester, Mass.  |

\* Member Executive Committee  
 † Died October 1, 1951

## OFFICERS

|   |                  |
|---|------------------|
| President and Chairman of Executive Committee | E. S. FRENCH     |
| Assistant to President                        | R. M. EDGAR      |
| Executive Vice President                      | T. G. SUGHRUE    |
| Vice President — Finance                      | W. S. TROWBRIDGE |
| Treasurer                                     | E. W. SMITH      |
| Vice President — Purchases and Stores         | H. M. RAINIE     |
| Purchasing Agent                              | G. H. BOLTON     |
| Vice President — Traffic                      | P. J. MULLANEY   |
| Assistant General Traffic Manager             | C. F. HEARD      |
| Vice President — Operations                   | F. W. ROURKE     |
| Vice President — Accounting                   | G. F. GLACY      |
| Vice President — On Leave of Absence          | J. W. SMITH      |
| Chief Engineer                                | S. G. PHILLIPS   |
| Assistant Chief Engineer                      | C. S. ROBINSON   |
| General Counsel                               | R. J. FLETCHER   |
| General Attorney                              | J. B. SAWYER     |
| General Attorney                              | R. JACKSON       |
| Clerk of Corporation                          | W. J. BURNS      |

### TRANSFER AGENTS (for old stock)

Old Colony Trust Company, 45 Milk Street, Boston, Mass.  
 Guaranty Trust Company, 140 Broadway, New York City

### TRANSFER AGENTS (for new stock when issued)

Old Colony Trust Company, 45 Milk Street, Boston, Mass.  
 Central Hanover Bank and Trust Company, 70 Broadway, New York City

## CONDENSED INCOME ACCOUNT FOR 1951

|  | INCOME          |                                |          |
|--|-----------------|--------------------------------|----------|
|  | 1951            | Increase or Decrease from 1950 | Per Cent |
| Operating Revenues                           | \$88,419,714 44 | \$ 1,838,952 04                | 2.12     |
| Operating Expenses                           | 71,807,911 67   | 4,991,449 60                   | 7.47     |
| Net Revenue from Operations                  | \$16,611,802 77 | d \$ 3,152,497 56              | 15.95    |
| Railway Tax Accruals                         | 7,710,136 71    | d 866,305 38                   | 10.10    |
| Railway Operating Income                     | \$ 8,901,666 06 | d \$ 2,286,192 18              | 20.45    |
| Equipment and Joint Facility Rents — Net Dr. | 3,994,677 11    | d 239,425 59                   | 5.65     |
| Net Railway Operating Income                 | \$ 4,906,988 95 | d \$ 2,046,766 59              | 29.45    |
| Other Income                                 | 698,829 41      | d 278,870 46                   | 28.51    |
| Total Income                                 | \$ 5,605,818 36 | d \$ 2,325,437 05              | 29.32    |

## DEDUCTIONS

|                            |                 |                   |       |
|----------------------------|-----------------|-------------------|-------|
| Rental Payments — Fixed    | \$ 597,802 36   | \$ 112,741 09     | 23.24 |
| Interest on Debt — Fixed   | 2,542,189 24    | d 75,226 18       | 2.87  |
| Interest on Unfunded Debt  | 11,216 65       | d 1,915 79        | 14.55 |
| Other Deductions           | 204,778 26      | 28,170 48         | 15.95 |
| Total Deductions           | \$ 3,355,986 51 | \$ 63,769 60      | 1.94  |
| Income After Fixed Charges | \$ 2,249,831 85 | d \$ 2,389,206 65 | 51.10 |

d Indicates decrease.

### Income after Fixed Charges (Available Net Income)

has been allocated in accordance with Mortgage

Indentures to the following purposes:

|  |                 |
|--|-----------------|
| Sinking Fund for Redemption of Series RR Bonds     | \$ 679,102 00   |
| Interest on Income Bonds Series A:                 |                 |
| Accrued for period, Jan. 1 to Dec. 31, 1951 at 4½% | 1,031,680 00    |
| Sinking Fund for Redemption of Series A Bonds      | 482,870 00      |
| Total Mortgage Allocations                         | \$ 2,193,652 00 |
| Net Income transferred to Profit and Loss          | 56,179 85       |
|  | \$ 2,249,831 85 |

*TO THE OWNERS OF  
THE BOSTON AND MAINE RAILROAD:*

The results of the operations of your company for the year 1951 show operating revenues of \$88,419,714 and operating expenses of \$71,807,912. Revenues were 2.1% above those for 1950, and operating expenses were 7.5% higher.

Income after fixed charges amounted to \$2,249,832 and after providing for contingent interest of \$1,031,680 and sinking funds of \$1,161,972, there was left a net of \$56,180.

**STATUS OF CAPITAL STOCK REORGANIZATION**

The Interstate Commerce Commission's order of January 23, 1951 approving the plan of modification of the Railroad's capital stock structure was stayed pending the order of the United States District Court for the District of Columbia in an action in which a small group of minority stockholders sought to set aside the Commission's order. After an investigation lasting approximately six months the Department of Justice of the United States authorized the filing of a pleading which attacked the Railroad's method of solicitation and the procedures adopted in processing the assents. It was also asserted that error was committed by the Interstate Commerce Commission in permitting these procedures to be followed and in accepting the certificates of the depository as to the number of assents received.

The court, by its order of January 11, 1952, on motion filed by your company ruled that it would not receive any evidence which had not previously been presented to the Interstate Commerce Commission and struck that part of the pleading of the Department of Justice which attacked the procedures adopted and the methods of solicitation used. The Court heard argument of all parties concerning the Commission's order approving the plan and on February 21, 1952, handed down an opinion affirming in all respects the Commission's order of January 23, 1951 and dissolving the restraining order. However, a petition was promptly filed with the Commission by the minority group asking for reopening of the proceeding, consideration of the evidence resulting from the Department of Justice investigation, and a reconsideration of the merits of the plan. At the time of making this report the Commission have not yet ruled on the petition.

**CHANGES IN LONG-TERM DEBT**

Long-Term Debt outstanding in hands of Public on December 31, 1951 amounted to \$86,550,857 (see note), a decrease of \$5,481,402 since December 31, 1950.

**DECREASE IN LONG-TERM DEBT**

|  |                    |
|--|--------------------|
| Funded Debt reacquired:  |                    |
| Series RR 1st Mtge. 4% Bonds due<br>7/1/60 . . . . .   | \$2,207,800        |
| Series A Income Mtge. 4½% Bonds due<br>7/1/70 . . . . .  | 300,000            |
| Vermont Valley Railroad 1st Mtge. 4%<br>Bonds due 10/1/55 . . . . .                              | 34,000             |
|  | <hr/>              |
| Decrease Funded Debt in hands of Public  | 2,541,800          |
| Decrease in Equipment Obligations ac-<br>count installment payments during the<br>year . . . . . | 2,939,602          |
|  | <hr/>              |
| Net Decrease in Long-Term Debt in<br>Hands of Public . . . . .                                   | <u>\$5,481,402</u> |

NOTE — Long-Term Debt of \$86,550,857 is outstanding after deducting \$7,593,900 Bonds owned by the Railroad, of which \$646,000 is pledged with Old Colony Trust Company, Trustee, in lieu of Mortgaged Property Sold.

During the period from December 31, 1939 to December 31, 1951, outstanding funded debt, other than equipment obligations, was reduced by \$44,384,330. In addition, funded debt of leased lines and obligations guaranteed by your company were reduced by \$5,486,000, bringing the total system debt reduction since December 31, 1939 to \$49,870,330.

Outstanding equipment obligations during the same period increased \$867,361.

Computed on an annual basis, total interest charges on debt outstanding December 31, 1951, including equipment obligations, were \$2,509,024 less than the year ended December 31, 1939, a reduction of approximately 41.7%.

## TAXES

Railway tax accruals were \$7,722,176.71 compared with \$8,589,582.09 for the year 1950, a decrease of \$867,405.38. Comparison of taxes accrued for the two years is tabulated below:

|  | 1951           | 1950           | Inc.           | % Inc. |
|--|----------------|----------------|----------------|--------|
| State and Municipal Taxes . . . . .                                | \$2,962,443.62 | \$2,964,286.70 | \$ 1,843.08 d  | 0.1 d  |
| Federal Taxes, Railroad Retirement (Employees' Pensions) . . . . . | 2,675,939.68   | 2,566,306.46   | 109,633.22     | 4.3    |
| Railroad Unemployment Insurance . . . . .                          | 224,228.71     | 213,790.81     | 10,437.90      | 4.9    |
| Income Taxes . . . . .   | 1,817,575.71   | 2,814,010.12   | 996,434.41 d   | 35.4 d |
| Other Taxes (Excise Taxes, etc.) . . . . .                         | 41,988.99      | 31,188.00      | 10,800.99      | 34.6   |
| Total . . . . .  | \$7,722,176.71 | \$8,589,582.09 | \$867,405.38 d | 10.1 d |

d—Decrease

The decrease in federal income taxes of \$996,434.41 was due to lower taxable income in the year which more than offset the increase in tax rate from 42% to 52%.

Federal retirement and unemployment insurance taxes both increased over the year 1950 reflecting the higher wage rates in effect during 1951.

Acting as an unpaid collection agency for the Federal Government, your company collected from others a total of \$11,695,779.99 in excise, withholding, retirement and transportation taxes.

## RETURN ON INVESTMENT

The rate of return earned by your company's net investment in transportation property as measured by net railway operating income (amount left after payment of operating expenses, taxes, equipment and joint facility rents, but before interest and other charges are paid) was 1.9% in 1951 compared with 2.7% in 1950. Property investment is the value of road and equipment used in operating the railroad, less depreciation, as shown by the books of the company, plus cash and materials and supplies.

Income represented by this low rate of return is required for such corporate uses as to pay interest on debt, make needed improvements, meet sinking funds and pay dividends.

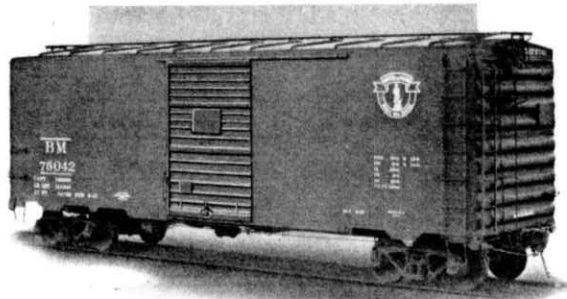
It is recognized generally that a 6% return is essential for railroads to maintain adequately their properties, make necessary improvements, and pay a fair return to the owners.

Comparison of return on investment for the years 1947 to 1951 is shown in the table below:

|  | 1947         | 1948         | 1949         | 1950         | 1951         |
|--|--------------|--------------|--------------|--------------|--------------|
| Gross Revenue . . . . .  | \$84,277,140 | \$94,165,928 | \$82,238,981 | \$86,580,762 | \$88,419,714 |
| Operating Expenses . . . . .   | 66,484,621   | 73,742,349   | 67,091,573   | 66,816,462   | 71,807,912   |
| Net Revenues . . . . .   | 17,792,519   | 20,423,579   | 15,147,408   | 19,764,300   | 16,611,802   |
| Railway Tax Accruals . . . . .   | 8,271,599    | 7,737,357    | 6,481,146    | 8,576,442    | 7,710,137    |
| Equipment Rents . . . . .  | 3,295,411    | 3,998,851    | 3,327,696    | 3,907,191    | 3,647,796    |
| Joint Facility Rents . . . . .   | 294,992      | 416,612      | 355,007      | 326,911      | 346,881      |
| Deduction from Net Revenue . . . . .   | 11,862,002   | 12,152,820   | 10,163,849   | 12,810,544   | 11,704,814   |
| Net Railway Operating Income (A) . . . . .   | 5,930,517    | 8,270,759    | 4,983,559    | 6,953,756    | 4,906,988    |
| Investment in Transportation Property including cash, materials and supplies, less Recorded Depreciation (B) . . . . . | 255,874,131  | 254,333,614  | 254,040,311  | 256,572,127  | 252,963,510  |
| Rate of Return = A ÷ B . . . . .   | 2.3%         | 3.3%         | 2.0%         | 2.7%         | 1.9%         |

## OPERATING RESULTS

Gross ton miles for the year 1951 were 1.1% less than in 1950. Gross ton miles produced per freight train hour increased 1.4% over the previous year. The proportion of gross ton miles handled by diesel locomotives in freight service at the end of 1951 was 97.3%, as compared with 95.4% at the end of 1950. Of the passenger train miles 67.6% were operated with diesels at the end of 1951, as compared with 64.3% at the end of 1950.



All steel box car typical of type acquired during 1951

### FREIGHT TRAFFIC

Freight revenue for the year was \$67,835,695, or 3.7% higher than in 1950, and was the largest freight revenue in any year in the company's history except 1948. Revenue ton miles showed an increase of 1.0% over 1950 and revenue per ton mile was 2.7% above 1950.

Unlike the previous year when the volume was relatively low during the early months and increased sharply following the Korean outbreak, there was little change in the aggregate traffic volume which took place in 1951. In general volume tended to decline as the year progressed with the most serious decline taking place in the movement of all rail coal, reflecting an increasing diversion to the use of competing fuels. The paper industry in northern New England, which is the largest single source of traffic volume, continued to function at a high level. The potato situation in Maine, following the harvesting of the 1951 crop, showed a marked improvement over the previous year, and without the benefit of government-supported prices, potatoes moved in good volume.

Traffic interchanged with water carriers showed an increase, although operations were hampered during the last half of the year by water-front strikes and the diversion of some regularly scheduled vessels into government service. The grain elevator at Hoosac Pier, operated by the Mystic Terminal Company, was restored to service in May. Activity increased as the year progressed, and at the year's end the elevator was being worked to capacity.

The Interstate Commerce Commission and the State Commissions in our territory approved a general interim increase in freight rates of 4% in eastern territory, and 2% in other territories and interterritorially, subject to various exceptions and maxima, which became effective April 4, 1951. The carriers had originally petitioned for a 6% general increase which was changed to a request for a 15% increase early in the year due to increased wages and cost of materials. Authority was received to make further general increases effective August 28 superseding those made on April 4, amounting to 9% within eastern territory and 6% elsewhere, subject also to various exceptions and maxima. It is estimated that this adjustment increased the general freight rate level on the Boston and Maine by about 7% over the level in effect the first of the year. The carriers renewed their request to the Interstate Commerce Commission and the State Commissions in an attempt to get the full 15% increase originally asked for.

Equality on export grain rates from Buffalo, New York, with Baltimore and Philadelphia was sought by the ports of Boston, Portland, and New York resulting in a case before the Interstate Commerce Commission. The Commission decided in favor of Baltimore and Philadelphia and this decision was appealed to a special district court which reversed the order of the Commission and permitted equalization of the rates. This decision was appealed by Baltimore and Philadelphia to the United States Supreme Court which upheld the findings of the district court. The filing of new rates re-establishing the previous differential by Baltimore and Philadelphia and the filing of equal rates by the northern ports resulted in suspension proceedings before the Interstate Commerce Commission and a renewed investigation into the differentials in 1952. In the meantime the rates remain equal. The Boston and Maine is actively participating in these cases in the interests of Boston and Portland and it is confidently anticipated that this equalization will result in increased handling of export grain shipments.

### PASSENGER TRAFFIC

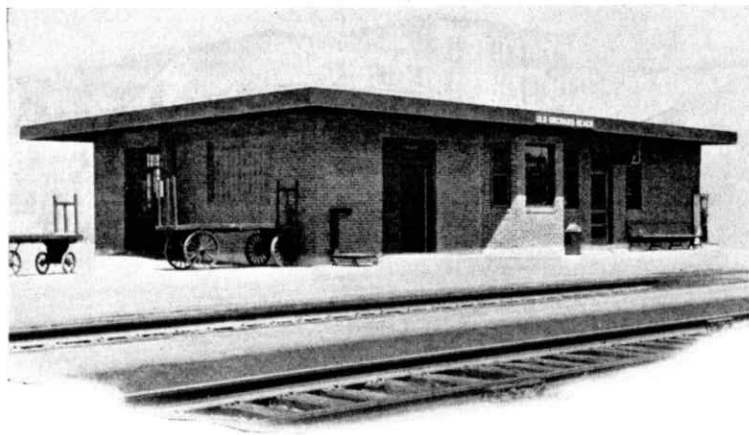
Passenger revenue for the year was \$11,361,086, a decline of 1.9% from 1950. The number of passengers handled was 4.4% less than last



year. This reduction was caused principally by less military travel in 1951 along with a leveling off in the volume of normal passenger travel.

Applications were filed with the State Commissions and the Interstate Commerce Commission early in the year seeking an increase in commutation fares of  $66\frac{2}{3}\%$ . The Interstate Commerce Commission and the New York State Commission granted the full increase requested, and higher fares were in effect during the last part of the year. However, over 90% of the commutation business is within Massachusetts and no decision had been rendered by the Massachusetts Commission up to the end of the year.

Activity has been continued in seeking approval of the discontinuance of little-used passenger trains. During the year approval was sought for discontinuance of all passenger train service on the Ashuelot, the Claremont, and the Portsmouth Branches in New Hampshire, the Stoneham Branch in Massachusetts, and the branch from Worcester, Mass. to Peterboro, N. H. The New Hampshire Commission approved the discontinuance on the Ashuelot Branch, but denied the Railroad's petition in the Claremont Branch case. This order has been appealed to the New Hampshire Supreme Court. No final action has yet been taken by the State Commissions on the Portsmouth, Stoneham and the Peterboro Branch cases.



Station building at Old Orchard Beach, Maine

Some reductions were made in the service on the Portland Division and extensive studies were conducted on the entire passenger train service. Readjustments of schedules which will result generally in improved service and substantial operating economies on some parts of our lines are planned for the spring of 1952. As a part of this program orders have already been placed with the Budd Manufacturing Company for three self-propelled rail diesel cars.

In addition to continuing such features as Race Trains, Snow Trains, and 'Round-the-Mountain trips, more special excursions, including all-expense tours, were instituted during the year with encouraging results and plans have been made to expand this program.

#### **EXPRESS TRAFFIC**

Revenue from express was \$911,530, an increase of 2.2%. This increase is attributable to higher express rates which were effective during the year. The new postal laws, effective January 1, 1952, limiting the size and weight of parcel post shipments, immediately increased the volume of traffic handled by the Railway Express Agency.

#### **MILK TRAFFIC**

Revenue from the transportation of milk and cream was \$1,319,058, a decline of less than 1% from 1950. There were no important changes in the movement of these products during the year. Favorable weather conditions in New England increased the production in this area, reducing the movement of milk and cream from the west.

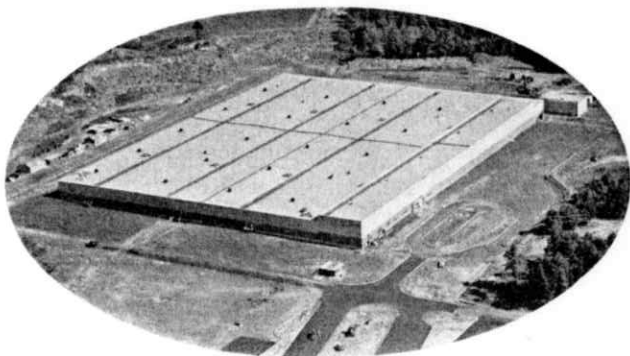
#### **RAILWAY MAIL PAY**

The Interstate Commerce Commission on November 13 entered an order granting, in large part, the increases in mail pay which were requested by the railroads. The additional revenue due your company under this order amounted to \$900,000 and resulted in a substantial addition to income in 1951, and should result in higher revenues from this class of traffic in the future. However, the Post Office Department has started handling mail by truck over a few routes in our territory. The entire situation is being closely watched and it is confidently believed that experience will show that mail can be transported by rail

more economically than by truck except in short haul service within a narrow radius of a major terminal.

### REAL ESTATE AND INDUSTRIAL DEVELOPMENT

Sales of Railroad-owned land in 1951 totaled 12,913,000 square feet. Of this amount over 6,600,000 square feet was sold for industrial and traffic producing purposes.



New Saco-Lowell Plant at Saco, Maine

While high construction costs and scarcity of materials resulted in postponement of construction of a number of proposed plants, there was a substantial amount of new industrial construction involving over 1,600,000 square feet of floor space completed or started along your company's lines in 1951, representing more than \$17,600,000. Twenty-one new private side tracks were constructed involving a total of 13,000 feet of track. The sale and leasing of industrial land, construction of new plant and warehouse facilities, and utilization of existing buildings are expected to result in an estimated 15,000 cars per year of new traffic. Rental income received from Railroad property has been substantially increased as a result of intensive activities carried on throughout the year.

### CHANGES IN EQUIPMENT

Diesel locomotive ownership at the end of the year was unchanged from the beginning of the year and totaled 161 locomotives, consisting of 194 units. Orders were placed during the year for 39 additional diesel locomotives which will be delivered in the first half of 1952. The new units will consist of seven 1200-horsepower switchers, nine 1500-horsepower road switchers, eleven 1600-horsepower road switchers, and twelve 660-horsepower switchers. On completion of delivery of these diesel units it is expected that 47 steam locomotives now in service will be retired and, with a few minor exceptions, the entire Fitchburg Division west of Ayer, the Portland Division east of Haverhill, and the New Hampshire Division north of Lowell will be completely dieselized.

Steam locomotive ownership at the end of the year totaled 213. During the year 33 steam locomotives were retired.

Revenue freight car ownership at the end of 1951 was 4,832, a reduction of 426 cars from the beginning of the year. Three hundred nineteen were sold to other railroads. The 750 new all-steel box cars leased from the Equitable Life Assurance Society under their lease plan in 1950 were delivered and placed in service in April and May. These are not included in the above ownership figure.

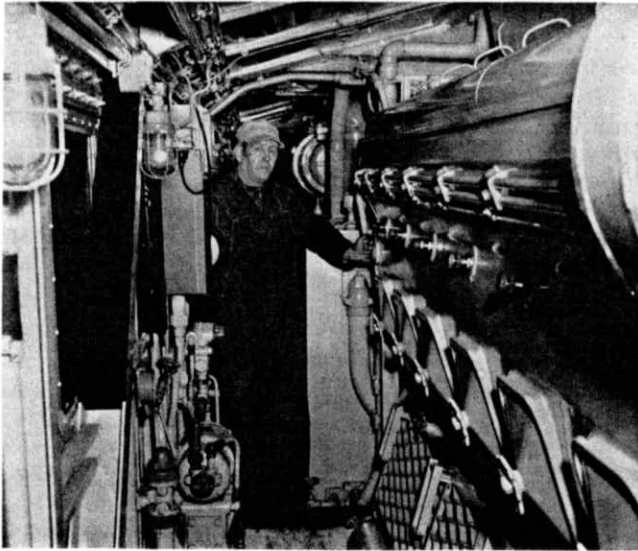
Passenger car ownership at the end of the year was 1,014, a reduction of 38 cars in the year. Ninety steel underframe cars were withdrawn from service. Fifty-two used steel coaches were purchased and placed in service in the commutation zone.

### WAGES AND WORKING RULES

The year 1951 saw many changes in our working rules and increases in pay to both operating and non-operating employees as a result of national movements originated by the various labor organizations.

Governmental operation of the railroads through the Department of the Army which became effective on August 27, 1950 continued through the year 1951 and there is no prospect of its early termination.

Effective February 1, 1951, employees represented by the non-operating organizations received an increase of twelve and one-half (12½) cents per hour in their basic rates of pay. The agreement contains a cost-of-living increase clause which provides for an increase of



Interior of Diesel-Electric Locomotive

one (1) cent per hour for each point increase in the cost-of-living index. During the year the cost-of-living index rose to 189.3 and resulted in step increases totaling eleven (11) cents per hour. Four (4) cents of this increase became effective on January 1, 1952. The agreement also provides for a similar decrease in rates if the cost-of-living index should decline, as well as a moratorium on further changes in basic rates of pay until October 1, 1953.

Train Dispatchers, as a result of a national movement, received an increase in basic rates of pay of \$35.76 per month effective February 1, 1951. Their agreement also contains a cost-of-living adjustment clause which during the year gave them an additional twenty-two dollars (\$22.00) per month.

Agreement was reached with the Brotherhood of Railroad Trainmen in May 1951, settling their demands for wage increases and rule changes as well as a forty-hour week for yardmen. However, prior to this settlement, yardmen engaged in a so-called "sick" strike on a few selected railroads, of which your company was one, for four days in

February in an attempt to force the roads to accede to the demands of the organization which were then pending nationally. The agreement in May resulted in an increase in basic rates of twelve and one-half (12½) cents per hour for conductors and trainmen in road service, and twenty-seven (27) cents per hour for men in yard service. A cost-of-living adjustment clause identical with that granted non-operating employees resulted in an extra eleven (11) cents per hour. A moratorium on wage and rule changes until October 1, 1953 is also provided in the agreement.

In accordance with this agreement, our yardmen have been granted a forty-hour week which became effective on February 15, 1952. At that time yardmen received an additional four (4) cents an hour added to their basic rates.

The request of the Brotherhood of Locomotive Firemen and Enginemen for a five (5) day week in yard service and increases in pay, as well as the Railroad's counter proposal for rule changes which was under negotiation at the end of the year 1950, is still unsettled. The case has been heard by a Presidential Emergency Board before which the Union refused to appear. The Board's recommendations conform very closely to the agreement already reached with the Brotherhood of Railroad Trainmen.

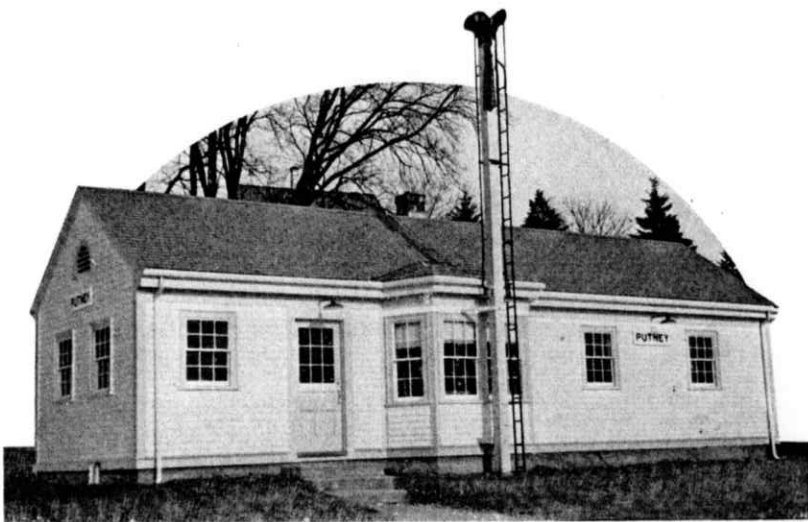
The request of the Brotherhood of Locomotive Engineers for similar changes, which was pending at the end of 1950, is also still unsettled. The organization is now engaged in taking a strike vote.

In February 1951, an amendment to the Railway Labor Act of 1934 became effective, permitting the various labor organizations to negotiate for a union shop and check off of union dues.

Union shop and dues check off agreement has been negotiated with the Brotherhood of Railroad Trainmen, and is applicable to employees in train and yard service. The various non-operating organizations served a request for a union shop and dues check off which was referred to a Presidential Emergency Board. The Board, on February 14, 1952, recommended that a national agreement providing for the union shop and dues check-off be negotiated. The Brotherhoods promptly notified the railroads of their desire to meet to effect an agreement while the individual carriers took the Board's recommendations under consideration to decide on the next step.



While the year 1951 brought about many changes in working rules and increases in rates of pay, the moratorium provisions referred to above should help to stabilize conditions until October of 1953. However, the refusal of the engine service Brotherhoods to accept the recommendations of the Presidential Fact Finding Boards and the "pattern" changes which have been accepted by ninety per cent of all railroad employees has created a very serious situation for railroads and the public all over the country.



New Station at Putney, Vermont

#### ADDITIONS AND IMPROVEMENTS TO PROPERTY

During the year 28.9 single track miles of existing stone ballast were resurfaced, 20.5 miles on the Portland Division, western route main line, and 8.4 miles on the Terminal Division, Fitchburg route main line. New rail totaling 4,078 tons, of which 3,965 tons consisted of 115 lbs. rail, were installed in main line tracks, releasing rail suitable for relaying in other tracks. A rail detector car tested 1,513 track miles of rail on important main lines and branches for the purpose of revealing internal defects.

In the year 67 structures were retired, in addition to 67 segments of track, totaling 97 miles. Four hundred tons of rip rap were installed in the vicinity of three bridges between Jefferson and Gorham, N. H., and fifteen hundred tons were installed in the vicinity of White River Junction, Vt., to protect roadway embankments.

Two new track bridges were built by the State of Massachusetts in connection with the new highway Route 128, one at North Lexington on the Lexington Branch, and one at Waltham Highlands on the Central Mass. Branch.

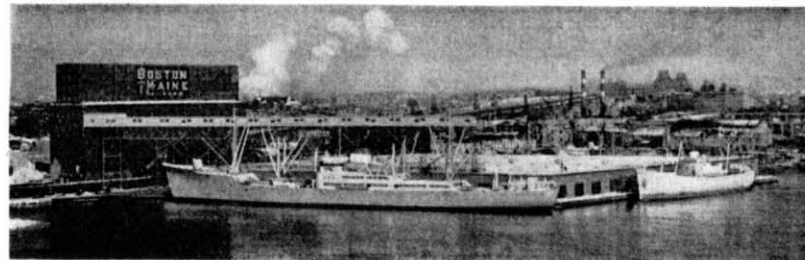
The grade crossing elimination project at Bridge Street, Salem, Mass., was completed, and work was started on the elimination of the nearby grade crossing at North Street. Preliminary work was commenced on the elimination of the Trapelo Road and Lexington Street crossings on the Fitchburg Division main line in Waverley, Mass.

Automatic highway crossing protection was installed at 16 crossings, consisting of 2 with automatic flashers, 7 with automatic flashers and bells, and 7 with automatic flashers and half gates.

New color light signals were installed between Dole Junction, N. H., and Brattleboro, Vt. and installations were partially completed between Brattleboro and Putney, Vt., by the end of the year.

Changes or additions to engine terminal facilities were made to provide for conversion to diesel locomotives at Salem and Rockport, Mass., and at Berlin, Concord, and Plymouth, N. H.

The program of mechanizing maintenance work to the fullest extent possible was continued as 119 new units of work equipment were added. This labor-saving equipment included track motor cars, tractors, compressors, a bulldozer and numerous other small tools and machines.



Hoosac Pier and Grain Elevator

The Hoosac Pier was finally completed and was formally turned over to the Railroad under the lease between the Railroad and the Commonwealth of Massachusetts on April 1, 1951. The Railroad has also undertaken the operation of the Hoosac elevator through its subsidiary, The Mystic Terminal Co.

Work at the new Mystic Piers is progressing satisfactorily, and it is hoped that by mid-year the Railroad will be able to enter into the premises under the lease with the Commonwealth of Massachusetts.

### MATERIALS AND SUPPLIES

The procurement of materials and supplies proved difficult throughout 1951. Government controls were established during the year on materials that we purchase, as well as controls over inventory and prices. Despite price controls, there has been a gradual increase in prices during 1951. Our weighted average statement of prices of materials, exclusive of fuel, indicates an increase of about 7.7% during that period.

Locomotive bituminous coal of good quality was available in adequate supply with no substantial change in price at the mines. Despite increases in freight rates that occurred, our average cost per net ton declined. This was due to our ability to obtain shipments from our regular sources, whereas during the first six months of 1950 labor troubles at the mines forced us to pay higher prices from other sources in order to maintain satisfactory operation. The increased use of diesel power reduced our purchases of locomotive coal to 192,000 net tons at an average cost f.o.b. Boston and Maine line of \$7.79 per net ton. This compares with the purchase of 233,000 net tons in 1950 at an average cost of \$7.84 per net ton.

Diesel fuel oil was available in ample supply and purchases totaled 23,556,917 gallons at an average cost of 9.47¢ per gallon. This compares with 22,698,313 gallons purchased for use in 1950 at an average price of 8.78¢ per gallon.

The total cost of all materials and supplies purchased in 1951, including fuel oil and locomotive coal, but excluding equipment purchases, was \$13,916,033, compared with \$11,720,733 in 1950.

The year just past points up sharply the basic difficulty of the railroad industry at the present time — inability to convert an adequate proportion of gross income into net income. The principal reasons why this is so are to be found in national labor and wage policies and in the

regulatory laws and their administration at both the Federal and State levels.

Wages and salaries are the largest item of expense in operating a railroad. If this cost is permitted to increase, as it has in recent years, without at least a comparable increase in rates and fares, it is obvious that there will be little, if any, net left for distribution to owners. The fruits of increased efficiency in the railroad plant, made possible by the expenditure of large sums of money, have gone almost entirely to labor. The powerful Federal and State Commissions must promptly come to a realization that railroads must have adequate earnings and sound credit if they are to survive as private enterprise.

Despite the inroads of other forms of transportation, taxpayer-supported to various degrees, the railroads are still the country's basic transportation and the industry can be depended on in these troubled times to maintain the high standard that it has in the past. It would be tragic if we had to have less than the best in rail transportation simply because the railroads have been kept from earning enough to attract the money needed to provide the tools to do the job.

---

*The Board records with deepest sorrow the death of Augustus P. Loring, Jr., on October 1, 1951. Mr. Loring was a wise and highly valued member of the Board of Directors of your company since February 25, 1941. His passing is a great loss to us all.*

---

At the end of another year it is a pleasure once again to express appreciation to the owners, officers and employees of your company for their support, and to note with satisfaction the continuing friendly relationships which exist with our many patrons.

*For the Board of Directors*



President

## Assets

## Condensed General Balance Sheet

## Liabilities

|  | Dec. 31, 1951           | Dec. 31, 1950           |
|--|-------------------------|-------------------------|
| <b>ROAD AND EQUIPMENT</b>  |                         |                         |
| Investment in Road   | \$191,579,314 36        | \$191,363,250 65        |
| Investment in Equipment  | 61,682,528 41           | 63,955,729 84           |
| <i>Total</i>   | <b>\$253,261,842 77</b> | <b>\$255,318,980 49</b> |
| Improvements on Leased Property  | 10,121,983 74           | 10,057,231 52           |
| Acquisition Adjustment   | c 5,961,122 63          | c 5,961,122 63          |
| Donations and Grants   | c 197,888 54            | c 194,183 79            |
| <i>Total Investment in Transportation Property</i>                                       | <b>\$257,224,835 34</b> | <b>\$259,220,905 59</b> |
| Accrued Depreciation — Road and Equipment  | c 22,546,893 64         | c 22,108,072 07         |
| Accrued Amortization of Defense Projects — Road and Equipment                            | c 10,624,214 85         | c 10,624,214 85         |
| <i>Investment in Transportation Property less Recorded Depreciation and Amortization</i> | <b>\$224,053,726 85</b> | <b>\$226,488,618 67</b> |
| Sinking Funds  | 1,663 53                | 1,240 48                |
| Capital and Other Reserve Funds  | 1,043,023 09            | 850,803 82              |
| Miscellaneous Physical Property  | 406,404 42              | 407,460 96              |
| Investments in Affiliated Companies  | 2,844,434 82            | 2,776,236 82            |
| Other Investments  | 730,947 43              | 544,255 88              |
| <i>Total Investments</i>   | <b>\$229,080,200 14</b> | <b>\$231,068,616 63</b> |
| <b>CURRENT ASSETS</b>  |                         |                         |
| Cash   | \$ 5,953,135 22         | \$ 8,654,903 42         |
| Cash in Transit — Agents' Remittances  | 943,479 57              | 971,454 03              |
| Temporary Cash Investments   | 8,090,600 00            | 8,101,400 00            |
| Special Deposits   | 2,239,459 78            | 2,168,375 90            |
| Loans and Bills Receivable   | 5,434 42                | 4,984 42                |
| Net Balance Receivable from Agents and Conductors  | 2,007,003 99            | 2,061,256 12            |
| Miscellaneous Accounts Receivable  | 3,252,002 10            | 4,185,057 51            |
| Material and Supplies  | 6,484,575 53            | 4,902,708 80            |
| Interest and Dividends Receivable  | 43,016 06               | 101,969 08              |
| Accrued Accounts Receivable  | 1,429,996 24            | 1,902,343 26            |
| Other Current Assets   | 48,592 08               | 20,488 52               |
| <i>Total Current Assets</i>  | <b>\$ 30,497,294 99</b> | <b>\$ 33,074,941 06</b> |
| <b>DEFERRED ASSETS</b>   |                         |                         |
| Working Fund Advances  | \$ 21,744 11            | \$ 17,968 09            |
| Insurance and Other Funds  | 2,006,150 19            | 1,898,096 13            |
| Other Deferred Assets  | 273,969 73              | 258,465 59              |
| <i>Total Deferred Assets</i>   | <b>\$ 2,301,864 03</b>  | <b>\$ 2,174,529 81</b>  |
| <b>UNADJUSTED DEBITS</b>   |                         |                         |
| Prepayments  | \$ 129,166 76           | \$ 148,171 19           |
| Discount on Funded Debt  | 305,531 62              | 339,011 17              |
| Property Retired Chargeable to Operating Expenses  | 489,264 90              | 911,664 90              |
| Other Unadjusted Debits  | 317,919 54              | 373,407 81              |
| Securities Issued or Assumed — Unpledged   | 7,211,900 00            | 4,704,100 00            |
| <i>Total Unadjusted Debits</i>   | <b>\$ 8,453,782 82</b>  | <b>\$ 6,476,355 07</b>  |
| <i>Grand Total</i>   | <b>\$270,333,141 98</b> | <b>\$272,794,442 57</b> |

c Indicates Credit Balance.

|   | Dec. 31, 1951           | Dec. 31, 1950           |
|---|-------------------------|-------------------------|
| <b>CAPITAL STOCK</b>                                  |                         |                         |
| Common Stock — 395,051 shares                         | \$ 39,505,100 00        | \$ 39,505,100 00        |
| Preferred Stock — 31,498 shares                       | 3,149,800 00            | 3,149,800 00            |
| First Preferred Stock — 388,179 shares                | 38,817,900 00           | 38,817,900 00           |
| Prior Preference Stock (Includes Negotiable Receipts) | 23,138,500 00           | 23,138,500 00           |
| <i>Total Capital Stock</i>                            | (a) \$104,611,300 00    | (a) \$104,611,300 00    |
| Premiums on Capital Stock                             | 4,227,040 14            | 4,227,040 14            |
| <i>Total Capital Stock and Premiums</i>               | <b>\$108,838,340 14</b> | <b>\$108,838,340 14</b> |
| <b>LONG-TERM DEBT</b>                                 |                         |                         |
| Funded Debt Unmatured                                 | (b) \$ 86,684,200 00    | \$ 86,718,200 00        |
| Lease and Purchase Agreements — Equipment             | 7,460,557 75            | 10,400,159 77           |
| <i>Total Long-Term Debt</i>                           | <b>\$ 94,144,757 75</b> | <b>\$ 97,118,359 77</b> |
| <b>CURRENT LIABILITIES</b>                            |                         |                         |
| Traffic and Car Service Balances — Net Payable        | \$ 4,562,946 94         | \$ 4,720,361 12         |
| Audited Accounts and Wages Payable                    | 3,792,950 89            | 3,159,896 82            |
| Miscellaneous Accounts Payable                        | 1,752,143 45            | 2,100,209 73            |
| Interest Matured Unpaid                               | 1,175,957 63            | 1,231,543 63            |
| Dividends Matured Unpaid                              | 12,349 64               | 14,808 45               |
| Unmatured Interest Accrued                            | 1,137,123 33            | 1,161,491 07            |
| Accrued Accounts Payable                              | 1,240,376 84            | 960,921 14              |
| Taxes Accrued   | 3,689,382 73            | 5,536,796 45            |
| Other Current Liabilities                             | 24,771 34               | 32,175 02               |
| <i>Total Current Liabilities</i>                      | <b>\$ 17,388,002 79</b> | <b>\$ 18,918,203 43</b> |
| <b>DEFERRED LIABILITIES</b>                           |                         |                         |
| Pension and Welfare Reserves                          | \$ 75,000 00            | \$ 25,000 00            |
| New York State E.G.C. Projects                        | 307,065 10              | 315,638 81              |
| Other Deferred Liabilities                            | 114,427 54              | 99,527 59               |
| <i>Total Deferred Liabilities</i>                     | <b>\$ 496,492 64</b>    | <b>\$ 440,166 40</b>    |
| <b>UNADJUSTED CREDITS</b>                             |                         |                         |
| Insurance Reserves                                    | \$ 50,000 00            | \$ 50,000 00            |
| Accrued Depreciation — Leased Property                | 224,619 01              | 167,392 72              |
| Other Unadjusted Credits                              | 311,239 08              | 438,741 67              |
| <i>Total Unadjusted Credits</i>                       | <b>\$ 585,858 09</b>    | <b>\$ 656,134 39</b>    |
| <b>SURPLUS</b>  |                         |                         |
| Additions to Property through Income and Surplus      | \$ 14,822,146 85        | \$ 14,822,146 85        |
| Funded Debt Retired through Income and Surplus        | 21,565,300 23           | 21,531,300 23           |
| Sinking Fund Reserves                                 | 1,172,180 53            | 9,578 53                |
| Miscellaneous Fund Reserves                           | 1,299,080 88            | 1,216,026 82            |
| <i>Total Appropriated Surplus</i>                     | <b>\$ 38,858,708 49</b> | <b>\$ 37,579,052 43</b> |
| Unearned Surplus                                      | 598,088 04              | 598,088 04              |
| Earned Surplus  | (c) 9,422,894 04        | (c) 8,646,097 97        |
| <i>Total Surplus</i>                                  | <b>\$ 48,879,690 57</b> | <b>\$ 46,823,238 44</b> |
| <i>Grand Total</i>                                    | <b>\$270,333,141 98</b> | <b>\$272,794,442 57</b> |

(a) Includes \$264,000.00 held by or for Company.

(b) Includes \$7,593,900.00 held by or for Company.

(c) Includes Surplus Earned by Lessor Companies before Consolidation.

*Income Account*

|   | Year ended<br>Dec. 31, 1951 | Increase or<br>Decrease | Per<br>Cent  |
|---|-----------------------------|-------------------------|--------------|
| <b>TRANSPORTATION REVENUE</b>                           |                             |                         |              |
| Freight . . . . .                                       | \$67,835,695 22             | \$2,433,675 24          | 3.72         |
| Passenger . . . . .                                     | 11,361,086 42               | d 220,500 95            | 1.90         |
| Baggage . . . . .                                       | 8,391 10                    | d 22,006 82             | 72.40        |
| Parlor and Chair Car . . . . .                          | 18,134 69                   | d 3,487 28              | 16.13        |
| Mail . . . . .  | 3,252,779 88                | d 728,682 04            | 18.30        |
| Express . . . . .                                       | 911,530 20                  | 19,501 10               | 2.19         |
| Other Passenger-Train . . . . .                         | 279,569 28                  | d 41,851 53             | 13.02        |
| Milk . . . . .  | 1,319,058 22                | d 6,725 02              | .51          |
| Switching . . . . .                                     | 858,733 44                  | 108,437 03              | 14.45        |
| <i>Total Transportation Revenue . . . . .</i>           | <i>\$85,844,978 45</i>      | <i>\$1,538,359 73</i>   | <i>1.82</i>  |
| <b>INCIDENTAL REVENUE</b>                               |                             |                         |              |
| Dining and Buffet . . . . .                             | \$ 121,262 95               | \$ 5,867 72             | 5.08         |
| Station and Train Privileges . . . . .                  | 127,472 62                  | d 4,069 40              | 3.09         |
| Parcel Room . . . . .                                   | 4,929 05                    | d 4,016 05              | 44.90        |
| Storage — Freight . . . . .                             | 34,151 49                   | d 3,818 80              | 10.06        |
| Storage — Baggage . . . . .                             | 4,411 95                    | 193 20                  | 4.58         |
| Demurrage . . . . .                                     | 556,875 38                  | 218,589 20              | 64.62        |
| Communication . . . . .                                 | 29,253 67                   | d 1,003 40              | 3.32         |
| Grain Elevator . . . . .                                | 56,889 46                   | 41,123 12               | 260.83       |
| Power . . . . .   | 81,362 46                   | 5,918 89                | 7.85         |
| Rents of Buildings and Other Property . . . . .         | 1,000,161 84                | 54,495 84               | 5.76         |
| Miscellaneous . . . . .                                 | 358,081 77                  | d 3,946 85              | 1.09         |
| <i>Total Incidental Revenue . . . . .</i>               | <i>\$ 2,374,852 64</i>      | <i>\$ 309,333 47</i>    | <i>14.98</i> |
| Joint Facility — Cr. . . . .                            | \$ 205,003 12               | d\$ 8,793 80            | 4.11         |
| Joint Facility — Dr. . . . .                            | 5,119 77                    | d 52 64                 | 1.02         |
| <i>Total Joint Facility Operating Revenue . . . . .</i> | <i>\$ 199,883 35</i>        | <i>d\$ 8,741 16</i>     | <i>4.19</i>  |
| <i>Total Operating Revenues . . . . .</i>               | <i>\$88,419,714 44</i>      | <i>\$1,838,952 04</i>   | <i>2.12</i>  |
| <b>OPERATING EXPENSES</b>                               |                             |                         |              |
| Maintenance of Way and Structures . . . . .             | \$15,265,733 22             | \$1,307,308 05          | 9.37         |
| Maintenance of Equipment . . . . .                      | 13,528,492 86               | 1,157,554 57            | 9.36         |
| Traffic . . . . .                                       | 1,351,311 97                | 75,444 18               | 5.91         |
| Transportation . . . . .                                | 37,774,318 48               | 2,125,399 00            | 5.96         |
| Miscellaneous Operations . . . . .                      | 233,779 42                  | 47,995 23               | 25.83        |
| General . . . . .                                       | 3,654,275 72                | 277,748 57              | 8.23         |
| <i>Total Operating Expenses . . . . .</i>               | <i>\$71,807,911 67</i>      | <i>\$4,991,449 60</i>   | <i>7.47</i>  |
| <i>Operating Ratio . . . . .</i>                        | <i>(81.21%)</i>             | <i>(4.04%)</i>          |              |
| <i>Net Operating Revenue . . . . .</i>                  | <i>\$16,611,802 77</i>      | <i>d\$3,152,497 56</i>  | <i>15.95</i> |

d Indicates decrease.

*Income Account (Continued)*

|   | Year ended<br>Dec. 31, 1951 | Increase or<br>Decrease | Per<br>Cent  |
|---|-----------------------------|-------------------------|--------------|
| TAX ACCRUALS . . . . .                                | \$ 7,710,136 71             | d\$ 866,305 38          | 10.10        |
| <i>Operating Income . . . . .</i>                     | <i>\$ 8,901,666 06</i>      | <i>d\$2,286,192 18</i>  | <i>20.43</i> |
| Rent from Locomotives . . . . .                       | \$ 28,422 40                | d\$ 1,812 26            | 5.99         |
| Rent from Passenger-Train Cars . . . . .              | 448,128 80                  | d 23,146 64             | 4.91         |
| Rent from Work Equipment . . . . .                    | 22,894 10                   | d 13,477 99             | 37.06        |
| Joint Facility Rent Income . . . . .                  | 423,185 06                  | 12,080 10               | 2.94         |
| <i>Total Rent Income . . . . .</i>                    | <i>\$ 922,630 36</i>        | <i>d\$ 26,356 79</i>    | <i>2.78</i>  |
| Hire of Freight Cars — Debit Balance . . . . .        | \$ 3,642,514 59             | d\$ 252,045 80          | 6.47         |
| Rent for Locomotives . . . . .                        | 20,709 03                   | 17,989 04               | 661.36       |
| Rent for Passenger-Train Cars . . . . .               | 483,945 69                  | d 63,823 93             | 11.65        |
| Rent for Work Equipment . . . . .                     | 71 72                       | 47 96                   | 201.85       |
| Joint Facility Rents . . . . .                        | 770,066 44                  | 32,050 35               | 4.34         |
| <i>Total Rents Payable . . . . .</i>                  | <i>\$ 4,917,307 47</i>      | <i>d\$ 265,782 38</i>   | <i>5.13</i>  |
| <i>Net Rents Payable . . . . .</i>                    | <i>\$ 3,994,677 11</i>      | <i>d\$ 239,425 59</i>   | <i>5.65</i>  |
| <i>Net Railway Operating Income . . . . .</i>         | <i>\$ 4,906,988 95</i>      | <i>d\$2,046,766 59</i>  | <i>29.43</i> |
| <b>OTHER INCOME</b>                                   |                             |                         |              |
| Income from Lease of Road and Equipment . . . . .     | \$ —                        | d\$ 112,126 62          | 100.00       |
| Miscellaneous Rent Income . . . . .                   | 296,420 40                  | 18,300 67               | 6.58         |
| Income from Nonoperating Property . . . . .           | 9,850 23                    | d 1,323 76              | 11.85        |
| Separately Operated Properties — Profit . . . . .     | —                           | d 95,000 00             | 100.00       |
| Dividend Income . . . . .                             | 40,276 50                   | d 58,282 50             | 59.13        |
| Interest Income . . . . .                             | 205,490 80                  | d 34,732 25             | 14.46        |
| Income from Sinking and Other Reserve Funds . . . . . | 92,593 49                   | 4,991 80                | 5.70         |
| Miscellaneous Income . . . . .                        | 54,197 99                   | d 497 80                | .91          |
| <i>Total Other Income . . . . .</i>                   | <i>\$ 698,829 41</i>        | <i>d\$ 278,670 46</i>   | <i>28.51</i> |
| <i>Total Income . . . . .</i>                         | <i>\$ 5,605,818 36</i>      | <i>d\$2,325,437 05</i>  | <i>29.32</i> |

*Income Account (Concluded)*

|  | Year ended<br>Dec. 31, 1951 | Increase or<br>Decrease | Per<br>Cent  |
|--|-----------------------------|-------------------------|--------------|
| <b>MISCELLANEOUS DEDUCTIONS FROM INCOME</b>  |                             |                         |              |
| Miscellaneous Rents . . . . .  | \$ 122,921 52               | \$ 116,152 02           | —            |
| Miscellaneous Tax Accruals . . . . .   | 12,040 00                   | d 1,100 00              | 8.37         |
| Miscellaneous Income Charges . . . . .   | 42,778 57                   | 23,531 58               | 122.26       |
| Income Applied to Sinking and Other Reserve Funds . . . . .  | 123,194 50                  | 6,423 00                | 5.50         |
| <i>Total Miscellaneous Deductions . . . . .</i>  | <i>\$ 300,934 59</i>        | <i>\$ 145,006 60</i>    | <i>93.00</i> |
| <i>Income Available for Fixed Charges . . . . .</i>  | <i>\$ 5,304,883 77</i>      | <i>d\$2,470,443 65</i>  | <i>31.77</i> |
| <b>FIXED CHARGES</b>   |                             |                         |              |
| Rent for Leased Roads . . . . .  | \$ 474,880 84               | d\$ 3,410 93            | .71          |
| Interest on Funded Debt — Fixed Interest . . . . .   | 2,542,189 24                | d 75,226 18             | 2.87         |
| Interest on Unfunded Debt . . . . .  | 11,216 65                   | d 1,915 79              | 14.59        |
| Amortization of Discount on Funded Debt . . . . .  | 26,765 19                   | d 684 10                | 2.49         |
| <i>Total Fixed Charges . . . . .</i>   | <i>\$ 3,055,051 92</i>      | <i>d\$ 81,237 00</i>    | <i>2.59</i>  |
| <i>Income after Fixed Charges (Available Net Income)</i>   | <i>\$ 2,249,831 85</i>      | <i>d\$2,389,206 65</i>  | <i>51.50</i> |
| <b>CONTINGENT CHARGES</b>  |                             |                         |              |
| Sinking Fund — Series RR Bonds . . . . .   | \$ 679,102 00               | —                       |              |
| Interest on Funded Debt — Contingent Interest . . . . .  | 1,031,680 00                | d\$ 31,636 73           |              |
| Sinking Fund — Series A Bonds . . . . .  | 482,870 00                  | —                       |              |
| <i>Total Contingent Charges . . . . .</i>  | <i>\$ 2,193,652 00</i>      | <i>d\$ 31,636 73</i>    |              |
| <i>Net Income after Fixed Charges and Other Deductions, transferred to Profit and Loss . . . . .</i> | <i>\$ 56,179 85</i>         | <i>d\$2,357,569 92</i>  |              |

d Indicates decrease.

*Earned Surplus—December 31, 1951*

| Item   | Debit            | Credit             |
|--|------------------|--------------------|
| Balance, December 31, 1950 (Credit) . . . . .  |                  | (a) \$8,646,097 97 |
| Credit Balance from Income Account for year 1951 . . . . .                           |                  | 56,179 85          |
| Adjustment to Par of Boston and Maine Railroad Bonds purchased during 1951 . . . . . |                  | 500,663 17         |
| Retired Miscellaneous Property Sold — Net . . . . .                                  |                  | 231,805 74         |
| Miscellaneous Debits — Net . . . . .   | \$ 11,852 69     |                    |
| Credit Balance, December 31, 1951 . . . . .  | (a) 9,422,894 04 |                    |
|  | \$9,434,746 73   | \$9,434,746 73     |

(a) Includes Surplus Earned by Lessor Companies before Consolidation.

**DISTRIBUTION OF THE INCOME DOLLAR — 1951**

Average Number of All Employees, 12,893

Total Payroll — All Services, \$51,693,631

|                            | CENTS |
|----------------------------|-------|
| WAGES                      | 54.61 |
| MATERIAL & SUPPLIES        | 11.02 |
| TAXES                      | 8.67  |
| FUEL                       | 5.10  |
| DEPRECIATION & RETIREMENT  | 4.78  |
| INTEREST & LEASE RENTALS   | 4.54  |
| EQUIPT & JT FACILITY RENTS | 4.48  |
| ALL OTHER EXPENSES         | 4.02  |
| SALARIES                   | 1.42  |
| DEBT REDUCTION             | 1.30  |
| NET INCOME                 | .06   |



Operating Expenses

|   | Year ended<br>Dec. 31, 1951 | Increase or<br>Decrease |
|---|-----------------------------|-------------------------|
| <b>MAINTENANCE OF WAY AND STRUCTURES</b>                              |                             |                         |
| Superintendence . . . . .   | \$ 944,480 46               | \$ 80,905 24            |
| Roadway Maintenance . . . . .   | 1,266,213 17                | 161,706 43              |
| Tunnels and Subways . . . . .   | 49,142 28                   | 4,104 50                |
| Bridges, Trestles and Culverts . . . . .                              | 370,295 49                  | 59,065 97               |
| Ties . . . . .  | 557,157 20                  | d 77,727 60             |
| Rails . . . . .   | 232,858 89                  | 246,625 87              |
| Other Track Material . . . . .  | 511,678 25                  | 114,594 97              |
| Ballast . . . . .   | 119,555 73                  | d 40,091 61             |
| Track Laying and Surfacing . . . . .                                  | 3,855,831 18                | 356,026 37              |
| Fences, Snowsheds and Signs . . . . .                                 | 85,458 43                   | 7,021 22                |
| Station and Office Buildings . . . . .                                | 675,940 19                  | 25,552 37               |
| Roadway Buildings . . . . .   | 57,415 59                   | 10,048 76               |
| Water Stations . . . . .  | 42,503 07                   | 8,123 62                |
| Fuel Stations . . . . .   | 26,279 28                   | d 5,294 32              |
| Shops and Enginehouses . . . . .                                      | 528,488 71                  | d 19,480 89             |
| Grain Elevators . . . . .   | 33,350 94                   | 23,513 63               |
| Wharves and Docks . . . . .   | 16,976 72                   | d 7,144 08              |
| Coal and Ore Wharves . . . . .  | 5,017 51                    | d 13,836 79             |
| Communication Systems . . . . .                                       | 88,779 99                   | 3,379 16                |
| Signals and Interlockers . . . . .                                    | 1,104,278 35                | 106,386 78              |
| Power Plants . . . . .  | 5,211 68                    | d 4,802 25              |
| Power-Transmission Systems . . . . .                                  | 87,433 03                   | 30,478 95               |
| Miscellaneous Structures . . . . .                                    | —                           | d 308 84                |
| Road Property — Depreciation . . . . .                                | 1,696,892 96                | 13,166 00               |
| Retirements — Road . . . . .  | 575,963 60                  | d 74,582 30             |
| Roadway Machines . . . . .  | 206,870 94                  | 22,552 55               |
| Dismantling Retired Road Property . . . . .                           | 85,149 11                   | d 26,142 64             |
| Small Tools and Supplies . . . . .                                    | 227,335 35                  | 22,564 72               |
| Removing Snow, Ice and Sand . . . . .                                 | 875,372 61                  | 126,575 37              |
| Public Improvements — Maintenance . . . . .                           | 270,306 40                  | 63,457 46               |
| Injuries to Persons . . . . .   | 149,973 30                  | 34,516 84               |
| Insurance . . . . .   | 19,074 45                   | 3,621 89                |
| Stationery and Printing . . . . .                                     | 14,641 37                   | 2,626 66                |
| Other Expenses . . . . .  | 6,508 49                    | d 892 17                |
| Maintaining Joint Tracks, Yards and<br>Other Facilities — Dr. . . . . | 606,309 63                  | 70,841 59               |
| Maintaining Joint Tracks, Yards and<br>Other Facilities — Cr. . . . . | 133,011 13                  | 19,845 43               |
| <i>Total Maintenance of Way and<br/>Structures</i> . . . . .          | \$15,265,733 22             | \$1,307,308 05          |
| <i>Ratio to Total Operating Revenues</i> . . . . .                    | (17.27%)                    | (1.15%)                 |

d Indicates decrease.

Operating Expenses (Continued)

|  | Year ended<br>Dec. 31, 1951 | Increase or<br>Decrease |
|--|-----------------------------|-------------------------|
| <b>MAINTENANCE OF EQUIPMENT</b>                                  |                             |                         |
| Superintendence . . . . .  | \$ 712,830 42               | \$ 66,271 48            |
| Shop Machinery . . . . .   | 233,090 30                  | 39,480 56               |
| Power-Plant Machinery . . . . .                                  | 59,180 51                   | d 5,888 81              |
| Shop and Power-Plant Machinery —<br>Depreciation . . . . .       | 109,592 00                  | d 1,553 00              |
| Dismantling Retired Shop and Power-<br>Plant Machinery . . . . . | 243 11                      | d 3,089 67              |
| Steam Locomotives — Repairs . . . . .                            | 1,618,474 25                | d 109,028 48            |
| Other Locomotives — Repairs . . . . .                            | 3,277,370 83                | 800,668 98              |
| Freight-Train Cars — Repairs . . . . .                           | 1,968,951 19                | d 91,359 10             |
| Passenger-Train Cars — Repairs . . . . .                         | 3,013,505 61                | 442,765 46              |
| Work Equipment — Repairs . . . . .                               | 314,527 37                  | 36,242 48               |
| Miscellaneous Equipment — Repairs . . . . .                      | 5,561 25                    | d 1,832 39              |
| Dismantling Retired Equipment . . . . .                          | 62,288 60                   | 10,906 30               |
| Retirements — Equipment . . . . .                                | —                           | 4,400 00                |
| Equipment — Depreciation . . . . .                               | 1,872,425 66                | 37,222 56               |
| Equipment — Amortization of Defense<br>Projects . . . . .        | —                           | d 23,436 36             |
| Injuries to Persons . . . . .                                    | 65,319 67                   | d 8,357 66              |
| Insurance . . . . .  | 95,521 87                   | d 5,119 81              |
| Stationery and Printing . . . . .                                | 12,342 56                   | 2,643 78                |
| Other Expenses . . . . .   | 13,074 60                   | d 4,638 84              |
| Joint Maintenance of Equipment<br>Expenses — Dr. . . . .         | 101,466 00                  | d 28,975 46             |
| Joint Maintenance of Equipment<br>Expenses — Cr. . . . .         | 7,272 94                    | d 232 55                |
| <i>Total Maintenance of Equipment</i> . . . . .                  | \$13,528,492 86             | \$1,157,554 57          |
| <i>Ratio to Total Operating Revenues</i> . . . . .               | (15.30%)                    | (1.01%)                 |
| <b>TRAFFIC</b>   |                             |                         |
| Superintendence . . . . .  | \$ 574,603 95               | \$ 64,431 68            |
| Outside Agencies . . . . .                                       | 443,530 56                  | 23,742 94               |
| Advertising . . . . .  | 193,024 09                  | d 10,553 43             |
| Traffic Associations . . . . .                                   | 61,288 32                   | d 1,303 77              |
| Industrial and Immigration Bureaus . . . . .                     | 28,502 51                   | 7,243 25                |
| Insurance . . . . .  | 111 75                      | d 63 85                 |
| Stationery and Printing . . . . .                                | 50,250 79                   | d 7,977 64              |
| Other Expenses . . . . .   | —                           | d 75 00                 |
| <i>Total Traffic</i> . . . . .                                   | \$ 1,351,311 97             | \$ 75,444 18            |
| <i>Ratio to Total Operating Revenues</i> . . . . .               | (1.53%)                     | (.06%)                  |

d Indicates decrease.

Operating Expenses (Continued)

|   | Year ended<br>Dec. 31, 1951 | Increase or<br>Decrease |
|---|-----------------------------|-------------------------|
| <b>TRANSPORTATION</b>                                   |                             |                         |
| Superintendence . . . . .                               | \$ 1,007,296 59             | \$ 103,654 69           |
| Dispatching Trains . . . . .                            | 419,426 10                  | 35,434 39               |
| Station Employees . . . . .                             | 6,052,492 29                | 403,589 02              |
| Weighing, Inspection and Demurrage<br>Bureaus . . . . . | 36,354 34                   | 2,198 52                |
| Station Supplies and Expenses . . . . .                 | 582,425 60                  | 57,226 96               |
| Yardmasters and Yard Clerks . . . . .                   | 1,267,020 33                | 102,110 11              |
| Yard Conductors and Brakemen . . . . .                  | 2,465,261 54                | 298,913 85              |
| Yard Switch and Signal Tenders . . . . .                | 435,887 47                  | 48,022 35               |
| Yard Enginemen . . . . .                                | 291,111 00                  | d 43,640 00             |
| Yard Motormen . . . . .                                 | 1,150,833 53                | 196,530 66              |
| Yard Switching Fuel . . . . .                           | 355,699 69                  | d 83,197 09             |
| Water for Yard Locomotives . . . . .                    | 10,494 75                   | d 540 52                |
| Lubricants for Yard Locomotives . . . . .               | 19,217 37                   | d 3,190 46              |
| Other Supplies for Yard Locomotives . . . . .           | 16,759 17                   | 1,107 72                |
| Enginehouse Expenses — Yard . . . . .                   | 235,798 78                  | 7,929 59                |
| Yard Supplies and Expenses . . . . .                    | 89,588 59                   | 7,033 98                |
| Operating Joint Yards and Terminals<br>—Dr. . . . .     | 2,534,606 79                | 221,461 59              |
| Operating Joint Yards and Terminals<br>—Cr. . . . .     | 433,889 32                  | 31,519 29               |
| Train Enginemen . . . . .                               | 1,274,798 09                | d 64,109 61             |
| Train Motormen . . . . .                                | 2,471,383 46                | 348,988 83              |
| Train Fuel . . . . .                                    | 3,501,536 71                | d 78,738 14             |
| Water for Train Locomotives . . . . .                   | 71,793 59                   | d 12,626 56             |
| Lubricants for Train Locomotives . . . . .              | 195,730 55                  | 6,677 65                |
| Other Supplies for Train Locomotives . . . . .          | 147,486 50                  | 30,034 41               |
| Enginehouse Expenses — Train . . . . .                  | 1,838,413 85                | 146,596 28              |
| Trainmen . . . . .                                      | 5,368,937 22                | 406,580 14              |
| Train Supplies and Expenses . . . . .                   | 2,473,048 02                | 257,991 57              |
| Signal and Interlocker Operation . . . . .              | 789,514 54                  | 73,241 10               |
| Crossing Protection . . . . .                           | 1,617,185 51                | 94,762 75               |
| Drawbridge Operation . . . . .                          | 68,247 90                   | 5,756 16                |
| Communication System Operation . . . . .                | 61,043 92                   | d 3,288 62              |
| Stationery and Printing . . . . .                       | 165,224 66                  | 37,492 31               |
| Other Expenses . . . . .                                | 38,381 79                   | 1,491 30                |
| Operating Joint Tracks and Facilities<br>—Dr. . . . .   | 47,858 54                   | 7,151 46                |
| Operating Joint Tracks and Facilities<br>—Cr. . . . .   | 64,523 63                   | 1,948 78                |
| Insurance . . . . .                                     | 11,306 68                   | d 6,706 72              |
| Clearing Wrecks . . . . .                               | 66,116 17                   | 9,789 80                |
| Damage to Property . . . . .                            | 51,617 32                   | 20,737 90               |
| Damage to Live Stock on Right of Way . . . . .          | 5,257 82                    | 756 71                  |
| Loss and Damage — Freight . . . . .                     | 608,640 77                  | d 9,514 27              |
| Loss and Damage — Baggage . . . . .                     | 3,928 67                    | 938 51                  |
| Injuries to Persons . . . . .                           | 425,005 22                  | d 469,781 25            |
| <i>Total Transportation</i> . . . . .                   | \$37,774,318 48             | \$2,125,399 00          |
| <i>Ratio to Total Operating Revenues</i> . . . . .      | (42.72%)                    | (1.55%)                 |

d Indicates decrease.

Operating Expenses (Concluded)

|  | Year ended<br>Dec. 31, 1951 | Increase or<br>Decrease |
|--|-----------------------------|-------------------------|
| <b>MISCELLANEOUS OPERATIONS</b>  |                             |                         |
| Dining and Buffet Service . . . . .  | \$ 178,584 31               | \$ 1,999 55             |
| Grain Elevators . . . . .  | 55,185 26                   | 45,992 91               |
| Other Miscellaneous Operations . . . . .   | 9 85                        | 2 77                    |
| <i>Total Miscellaneous Operations</i> . . . . .  | \$ 233,779 42               | \$ 47,995 23            |
| <i>Ratio to Total Operating Revenues</i> . . . . .   | (.26%)                      | (.04%)                  |
| <b>GENERAL</b>   |                             |                         |
| Salaries and Expenses of General Officers<br>Salaries and Expenses of Clerks and<br>Attendants . . . . . | \$ 276,474 35               | \$ 19,758 54            |
| General Office Supplies and Expenses . . . . .   | 2,364,260 75                | 195,821 44              |
| Law Expenses . . . . .   | 179,009 79                  | 5,948 91                |
| Insurance . . . . .  | 246,580 59                  | 29,699 92               |
| Pensions and Gratuities . . . . .  | 797 02                      | 10                      |
| Stationery and Printing . . . . .  | 318,170 69                  | d 4,876 80              |
| Valuation Expenses . . . . .   | 73,098 52                   | 18,964 34               |
| Other Expenses . . . . .   | 39,114 40                   | 2,244 58                |
| General Joint Facilities — Dr. . . . .   | 130,100 83                  | 8,599 78                |
|  | 26,668 78                   | 1,587 76                |
| <i>Total General</i> . . . . .   | \$ 3,654,275 72             | \$ 277,748 57           |
| <i>Ratio to Total Operating Revenues</i> . . . . .   | (4.13%)                     | (.23%)                  |
| <i>Total Operating Expenses</i> . . . . .  | \$71,807,911 67             | \$4,991,449 60          |
| <i>Ratio to Total Operating Revenues</i> . . . . .   | (81.21%)                    | (4.04%)                 |

d Indicates decrease.

Capital Stock and Long-Term Debt Outstanding

| CAPITAL STOCK                        | Amount Outstanding | Dividend Rate |
|--------------------------------------|--------------------|---------------|
| Prior Preference                     | \$ 23,136,100 00   | 7 %           |
| Prior Preference Negotiable Receipts | 2,400 00           | 7 %           |
| First Preferred Class A              | 18,860,000 00      | 5 %           |
| “ “ “ B                              | 7,648,800 00       | 8 %           |
| “ “ “ C                              | 7,917,100 00       | 7 %           |
| “ “ “ D                              | 4,327,000 00       | 10 %          |
| “ “ “ E                              | 65,000 00          | 4½ %          |
| Preferred                            | 3,149,800 00       | 6 %           |
| Common                               | 39,505,100 00      |               |
|                                      | \$104,611,300 00   |               |

| LONG-TERM DEBT  | Amount Outstanding |
|---|--------------------|
| Bonds secured by Mortgage dated December 1, 1919, supplemented as of July 1, 1940 |                    |
| Series II   | \$ 1,237,000 00    |
| “ RR  | 55,995,700 00      |
| “ JJ  | 902,000 00         |
| “ AC  | 3,065,000 00       |
| Income Mortgage “ A   | 25,261,500 00      |
| Vermont Valley Railroad 1st Mortgage Bonds  | c 223,000 00       |
| <i>Total Mortgage Bonds</i>   | \$86,684,200 00    |
| Lease and Purchase Agreements — Equipment   | 7,460,557 75       |
| <i>Grand Total Long-Term Debt</i>   | \$94,144,757 75    |

Capital Stock Outstanding December 31, 1951—Leased Roads

| CAPITAL STOCK              | Amount Outstanding | Dividend Rate<br>(Paid as rental) | Owned, Held in Treasury or Insurance Fund |
|----------------------------|--------------------|-----------------------------------|---|
| Stony Brook                | \$ 300,000 00      | 7%                                | \$ 38,700 00                              |
| Northern                   | 3,068,400 00       | 6%                                | 1,034,700 00                              |
| Vermont and Massachusetts  | 3,193,000 00       | 6%                                | 659,600 00                                |
| <i>Total Capital Stock</i> | \$6,561,400 00     |                                   | \$1,733,000 00                            |

December 31, 1951—Owned Road

| Cumulative Dividends Unpaid Since †Jan. 1, 1932 — *Oct. 1, 1931 | Amount in Hands of Public | Owned, Deposited with Trustee, or Held in Treasury** |
|---|---------------------------|--|
| †\$140 00 per share \$32,114,600 00                             | \$ 22,939,000 00          | \$ 197,100 00  |
| †\$140 00 “ “ 3,360 00  | 2,400 00                  |  |
| *\$101 25 “ “ 19,069,526 25                                     | 18,834,100 00             | 25,900 00  |
| *\$162 00 “ “ 12,391,056 00                                     | 7,648,800 00              |  |
| *\$141 75 “ “ 11,214,551 25                                     | 7,911,500 00              | 5,600 00   |
| *\$202 50 “ “ 8,755,897 50                                      | 4,323,900 00              | 3,100 00   |
| *\$ 91 125 “ “ 59,231 25  | 65,000 00                 |  |
| Non-cumulative  | 3,149,800 00              |  |
|   | 39,472,800 00             | 32,300 00  |
|   | \$104,347,300 00          | \$ 264,000 00  |

| Date of Maturity  | Rate    |                  |                |
|-------------------|---------|------------------|----------------|
| May 1, 1955       | 5 %     | \$ 1,237,000 00  |                |
| July 1, 1960      | 4 %     | 51,415,300 00    | \$4,580,400 00 |
| April 1, 1961     | 4¾ %    | 897,000 00       | b 5,000 00     |
| September 1, 1967 | 5 %     | 2,424,000 00     | b 641,000 00   |
| July 1, 1970      | 4½ %    | 22,894,000 00    | 2,367,500 00   |
| October 1, 1955   | 4 %     | 223,000 00       |                |
|                   |         | \$ 79,090,300 00 | \$7,593,900 00 |
| Various           | Various | 7,460,557 75     |                |
|                   |         | \$ 86,550,857 75 | \$7,593,900 00 |

\*\* No interest.

a Includes 12 shares held for conversion of Concord & Montreal Railroad Stock.

b Deposited with and held by Trustee in Lieu of Mortgaged Property Sold, to release would require cash payment at par.

c Issued under Vermont Valley Railroad Mortgage dated October 1, 1940, assumed on December 31, 1949.

Miles of Road Operated, December 31, 1951

| STEAM ROADS                 | Owned    | Leased  | Total    |
|-----------------------------|----------|---------|----------|
| Main Lines                  | 877 68   | 137 20  | 1,014 88 |
| Branch Lines                | 608 07   | 4 32    | 612 39   |
| Trackage Rights             | —        | 74 00   | 74 00    |
| <i>Total Road Operated</i>  | 1,485 75 | 215 52  | 1,701 27 |
| Second Track                | 455 91   | a 79 86 | 535 77   |
| Third Track                 | 8 06     | b 7 69  | 15 75    |
| Other Tracks                | 868 68   | 98 53   | 967 21   |
| <i>Total Track Operated</i> | 2,818 40 | 401 60  | 3,220 00 |

a Includes trackage rights 13.17 miles.

b Includes trackage rights .99 mile.

Additions and Betterments (Operating Property)—December 31, 1951

| TITLE ACCOUNT        |                                   | Gross Expenditures    | Property Retired       | Net Capital Changes   |
|----------------------|-----------------------------------|-----------------------|------------------------|-----------------------|
| ROAD                 |                                   |                       |                        |                       |
| 1                    | Engineering                       | \$ 34,632 14          | \$ 40,753 18           | \$ 6,121 04           |
| 2                    | Land for Transportation Purposes  | 15,413 23             | 139,328 27             | 123,915 04            |
| 3                    | Grading                           | 30,916 56             | 5,377 00               | 25,539 56             |
| 6                    | Bridges, Trestles and Culverts    | 46,550 55             | 31,765 62              | 14,784 93             |
| 8                    | Ties                              | 9,135 23              | 31,143 12              | 22,007 89             |
| 9                    | Rails                             | 397,319 85            | 389,952 32             | 7,367 53              |
| 10                   | Other Track Material              | 539,859 72            | 388,258 67             | 151,601 05            |
| 11                   | Ballast                           | 147 20                | 12,576 32              | 12,429 12             |
| 12                   | Track Laying and Surfacing        | 62,241 83             | 29,185 28              | 33,056 55             |
| 13                   | Fences, Snowsheds and Signs       | 7,982 38              | 313 00                 | 7,669 38              |
| 16                   | Station and Office Buildings      | 241,614 61            | 413,124 90             | 171,510 29            |
| 17                   | Roadway Buildings                 | 9,315 13              | 1,416 27               | 7,898 86              |
| 18                   | Water Stations                    | 8,597 90              | 43,268 29              | 34,668 39             |
| 19                   | Fuel Stations                     | 4,569 23              | 20,537 67              | 15,968 44             |
| 20                   | Shops and Enginehouses            | 203,420 76            | 83,606 85              | 119,813 91            |
| 21                   | Grain Elevators                   | 5,329 71              | —                      | 5,329 71              |
| 23                   | Wharves and Docks                 | 902 27                | —                      | 902 27                |
| 26                   | Communication Systems             | 3,849 61              | 3,358 38               | 491 23                |
| 27                   | Signals and Interlockers          | 400,211 83            | 84,580 90              | 315,630 93            |
| 29                   | Power Plants                      | 3,535 21              | —                      | 3,535 21              |
| 31                   | Power-Transmission Systems        | 30,758 33             | 12,913 45              | 17,844 88             |
| 35                   | Miscellaneous Structures          | 230 73                | —                      | 230 73                |
| 37                   | Roadway Machines                  | 113,238 80            | 46,681 64              | 66,557 16             |
| 38                   | Roadway Small Tools               | 1,372 97              | —                      | 1,372 97              |
| 39                   | Public Improvements—Construction  | 4,706 60              | 5,364 49               | 657 89                |
| 44                   | Shop Machinery                    | 52,967 60             | 155,891 62             | 102,924 02            |
| 45                   | Power-Plant Machinery             | 1,483 12              | 4,009 24               | 5,492 36              |
|                      | <b>Total Road</b>                 | <b>\$2,227,336 86</b> | <b>\$1,943,404 48</b>  | <b>\$ 283,932 38</b>  |
| EQUIPMENT            |                                   |                       |                        |                       |
| 51                   | Steam Locomotives                 | \$ 5,660 86           | \$1,200,968 16         | \$1,206,629 02        |
| 52                   | Other Locomotives                 | 136,094 53            | —                      | 136,094 53            |
| 53                   | Freight-Train Cars                | 78,200 76             | 1,012,234 06           | 934,033 30            |
| 54                   | Passenger-Train Cars              | 527,921 33            | 836,294 81             | 308,373 48            |
| 57                   | Work Equipment                    | 98,940 13             | 49,807 38              | 49,132 75             |
| 58                   | Miscellaneous Equipment           | 3,969 40              | 13,362 31              | 9,392 91              |
|                      | <b>Total Equipment</b>            | <b>\$ 839,465 29</b>  | <b>\$3,112,666 72</b>  | <b>\$2,273,201 43</b> |
| GENERAL EXPENDITURES |                                   |                       |                        |                       |
| 72                   | General Officers and Clerks       | —                     | \$ 213 00              | \$ 213 00             |
| 73                   | Law                               | —                     | 122 00                 | 122 00                |
| 74                   | Stationery and Printing           | —                     | 14 00                  | 14 00                 |
| 75                   | Taxes                             | —                     | 68 00                  | 68 00                 |
| 76                   | Interest during Construction      | —                     | 2,653 45               | 2,653 45              |
| 77                   | Other Expenditures—General        | —                     | 46 00                  | 46 00                 |
|                      | <b>Total General Expenditures</b> | <b>—</b>              | <b>\$ 3,116 45</b>     | <b>\$ 3,116 45</b>    |
|                      | <b>Totals</b>                     | <b>\$3,066,802 15</b> | <b>*\$5,059,187 65</b> | <b>\$1,992,385 50</b> |

\* DISPOSITION OF CREDITS

|             |   |  |                       |
|-------------|---|--|-----------------------|
| Account No. |   |  |                       |
| 701         | — Road and Equipment Property — (Equipment Converted)                 |  | \$ 50,000 00          |
| 702½        | — Accrued Depreciation — Road and Equipment — Overhead Road           |  | 3,066,362 84          |
| 708         | — Cash — (Land, Buildings, Equipment, Rail and Track Fastenings Sold) |  | 1,054,505 16          |
| 716         | — Material and Supplies — (Usable Material)                           |  | 219,666 62            |
| 779         | — Accrued Depreciation — Leased Property                              |  | 97,125 71             |
| 531         | — Operating Expenses  |  | 568,632 73            |
| 621         | — Profit and Loss — Miscellaneous Debits                              |  | 2,894 59              |
|             | <b>Total Amount credited to Investment in Road and Equipment</b>      |  | <b>\$5,059,187 65</b> |

Operating Statistics

|  | Year ended Dec. 31, 1951 | Increase or Decrease |
|--|--------------------------|----------------------|
| <b>AVERAGE MILES OF ROAD OPERATED</b>                                      |                          |                      |
| Freight service  | \$ 1,696.69              | \$ 8.61              |
| Passenger service  | 1,404.69                 | .21                  |
| <b>Total</b>   | <b>1,702.04</b>          | <b>8.61</b>          |
| <b>TRAIN MILEAGE</b>   |                          |                      |
| Freight service (with locomotives)   | 3,202,048                | 51,491               |
| Passenger service (with locomotives)                                       | 5,798,629                | 240,592              |
| Passenger service (without locomotives)                                    | 228,109                  | 14,500               |
| Work service   | 90,525                   | 2,353                |
| <b>Total train miles</b>   | <b>9,319,311</b>         | <b>279,936</b>       |
| <b>* LOCOMOTIVE MILEAGE</b>  |                          |                      |
| Freight service  | 3,459,926                | 52,404               |
| Passenger service  | 5,985,996                | 249,221              |
| Train switching  | 298,194                  | 15,660               |
| Yard switching   | 2,132,850                | 76,200               |
| Work service   | 149,388                  | 935                  |
| <b>Total locomotive miles</b>  | <b>12,026,354</b>        | <b>361,280</b>       |
| <b>CAR MILEAGE</b>   |                          |                      |
| <b>Freight-Train Car Miles:</b>  |                          |                      |
| Loaded   | 124,233,559              | 2,414,593            |
| Empty  | 50,215,214               | 3,810,421            |
| Caboose  | 3,273,995                | 53,320               |
| <b>Total freight-train car miles</b>                                       | <b>177,722,768</b>       | <b>6,278,334</b>     |
| <b>Passenger-Train Car Miles:</b>  |                          |                      |
| Passenger coaches  | 16,265,170               | 775,535              |
| Sleeping and parlor cars   | 3,442,054                | 22,018               |
| Club, lounge, dining and observation cars                                  | 157,571                  | 3,314                |
| Business cars  | 11,471                   | 547                  |
| Mail, express, and baggage cars, and combination cars other than passenger | 14,664,122               | 331,385              |
| Combination passenger cars (mail, express, or baggage with passenger)      | 3,696,986                | 265,173              |
| <b>Total passenger-train car miles</b>                                     | <b>38,237,374</b>        | <b>1,396,878</b>     |
| <b>Total transportation service car miles</b>                              | <b>215,960,142</b>       | <b>7,675,212</b>     |
| <b>AVERAGES</b>  |                          |                      |
| Operating revenues per mile of road  | \$ 51,949.26             | \$1,336.47           |
| Operating expenses per mile of road  | 42,189.32                | 3,130.21             |
| Net railway operating income per mile of road                              | 2,883.00                 | 1,181.98             |
| Operating revenues per train mile  | 9.58                     | .47                  |
| Operating expenses per train mile  | 7.78                     | .75                  |
| Net railway operating income per train mile                                | .53                      | .20                  |
| Total freight cars per revenue train mile                                  | 54.48                    | 1.05                 |
| Loaded freight cars per revenue train mile                                 | 38.80                    | .13                  |
| Empty freight cars per revenue train mile                                  | 15.68                    | .93                  |
| <b>Total passenger cars per train mile</b>                                 | <b>6.34</b>              | <b>—</b>             |

\* Includes 8,937,347 Diesel Locomotive Miles.  
Italics indicate decrease.

Traffic Statistics

|  | Year Ended<br>Dec. 31, 1951 | Increase or<br>Decrease |
|--|-----------------------------|-------------------------|
| <b>FREIGHT</b>   |                             |                         |
| Freight Revenue . . . . .  | \$ 67,835,695               | \$ 2,433,675            |
| Tons of revenue freight carried . . . . .  | 19,750,343                  | 199,548                 |
| Tons of company freight carried . . . . .  | 1,181,580                   | 16,798                  |
| <i>Total tons of freight carried . . . . .</i>   | 20,931,923                  | 182,750                 |
| Tons of revenue freight carried one mile . . . . .                                     | 3,229,847,951               | 31,849,981              |
| Tons of company freight carried one mile . . . . .                                     | 76,130,760                  | 4,592,308               |
| <i>Total tons of freight carried one mile . . . . .</i>                                | 3,305,978,711               | 27,257,673              |
| <b>PASSENGER</b>   |                             |                         |
| Passenger Revenue:   |                             |                         |
| Monthly commutation ticket passengers . . . . .  | \$ 1,087,918.82             | \$ 55,881.77            |
| All other commutation ticket passengers . . . . .                                      | 1,704,248.09                | 67,099.99               |
| Single fare ticket passengers (not including interline) . . . . .                      | 4,853,734.42                | 197,339.72              |
| Interline ticket passengers . . . . .  | 3,715,185.09                | 99,820.53               |
| <i>Total passenger revenue . . . . .</i>   | \$11,361,086.42             | \$220,500.95            |
| Number of Passengers Carried:  |                             |                         |
| Monthly commutation ticket passengers . . . . .  | 3,584,935                   | 338,865                 |
| All other commutation ticket passengers . . . . .                                      | 7,536,019                   | 201,233                 |
| Single fare ticket passengers (not including interline) . . . . .                      | 5,422,483                   | 292,691                 |
| Interline ticket passengers . . . . .  | 1,160,261                   | 20,987                  |
| <i>Total number of passengers carried . . . . .</i>                                    | 17,703,698                  | 811,802                 |
| Number of Passengers carried one mile:   |                             |                         |
| Monthly commutation ticket passengers . . . . .  | 86,201,526                  | 8,379,107               |
| All other commutation ticket passengers . . . . .                                      | 77,687,817                  | 3,013,534               |
| Single fare ticket passengers (not including interline) . . . . .                      | 167,253,230                 | 6,057,952               |
| Interline ticket passengers . . . . .  | 106,817,132                 | 1,001,947               |
| <i>Total number of passengers carried one mile . . . . .</i>                           | 437,959,705                 | 16,448,646              |
| Number of passengers to and from Boston, including monthly ticket passengers . . . . . | 17,145,987                  | 902,182                 |
| <b>AVERAGES</b>  |                             |                         |
| Freight:   |                             |                         |
| Miles hauled — revenue freight . . . . .   | 163.53                      | .04                     |
| Tons of revenue freight per train mile . . . . .                                       | 1008.68                     | 25.75                   |
| Tons of revenue freight per loaded car mile . . . . .                                  | 26.00                       | .75                     |
| Revenue per ton of freight . . . . .   | \$ 3.43466                  | \$ .08942               |
| Revenue per ton per mile . . . . . (cents)   | 2.100                       | .055                    |
| Revenue per revenue train mile . . . . .   | \$ 21.185                   | \$ 1.083                |
| Freight revenue per loaded car mile . . . . . (cents)                                  | 54.603                      | 2.962                   |
| Passenger:   |                             |                         |
| Average distance carried per passenger (miles) . . . . .                               | 24.74                       | .20                     |
| Number of passengers per train mile . . . . .  | 72.67                       | —                       |
| Number of passengers per car mile . . . . .  | 18.71                       | .14                     |
| Revenue per passenger . . . . . (cents)  | 64.17                       | 1.62                    |
| Revenue per passenger mile, monthly commutation ticket passengers . . . . . (cents)    | 1.262                       | .053                    |
| Revenue per passenger mile, other commutation ticket passengers . . . . . (cents)      | 2.194                       | .001                    |
| Revenue per passenger mile, single fare not including interline . . . . . (cents)      | 2.902                       | .012                    |
| Revenue per passenger mile, interline passengers . . . . . (cents)                     | 3.478                       | .061                    |
| Revenue per passenger mile, all passengers . . . . . (cents)                           | 2.594                       | .045                    |
| Passenger revenue per passenger car mile . . . . . (cents)                             | 48.543                      | 1.207                   |
| Total passenger service train revenue per train mile . . . . .                         | \$ 2.866                    | \$ .056*                |

\* 1950 figure restated to include Dining and Buffet Revenue.  
Italics indicate decrease.

CARLOADS HAULED IN 1951

